



RawPreviewExtractor

Short User Manual
Version 0.4

The program **RawPreviewExtractor** is intended to extract the JPEG previews contained in RAW files:

- All RAW formats that have JPEG previews are supported.
- The preview is extracted “as-is”: same image size.
- It is possible to copy EXIF data from original RAW to the destination JPEG.
- **Only** JPEG previews are extracted; other formats (Bitmap, HEIC) are not supported.
- Some RAW files (Cinema-DNG, images taken with some mobile phones and some action cameras) lack embedded previews, and therefore nothing will be extracted from them.

Version 0.4

We offer for attention the second public release (0.3), which implements the most frequent requests for versions 0.2-0.3. We continue to gather your feedback and implement the most frequently appearing requests.

System requirements

- Windows: Windows 7...11, 64-bit, we assume a monitor that is no less than 1200x800
- Mac: macOS 10.12 – 12.x

Installing RawPreviewExtractor

- Windows: launch the installer, and follow the instructions of the installation wizard.
- Mac: open (double click) the installation DMG file, drag the application icon to the Application folder (follow the blue arrow).

Deleting RawPreviewExtractor:

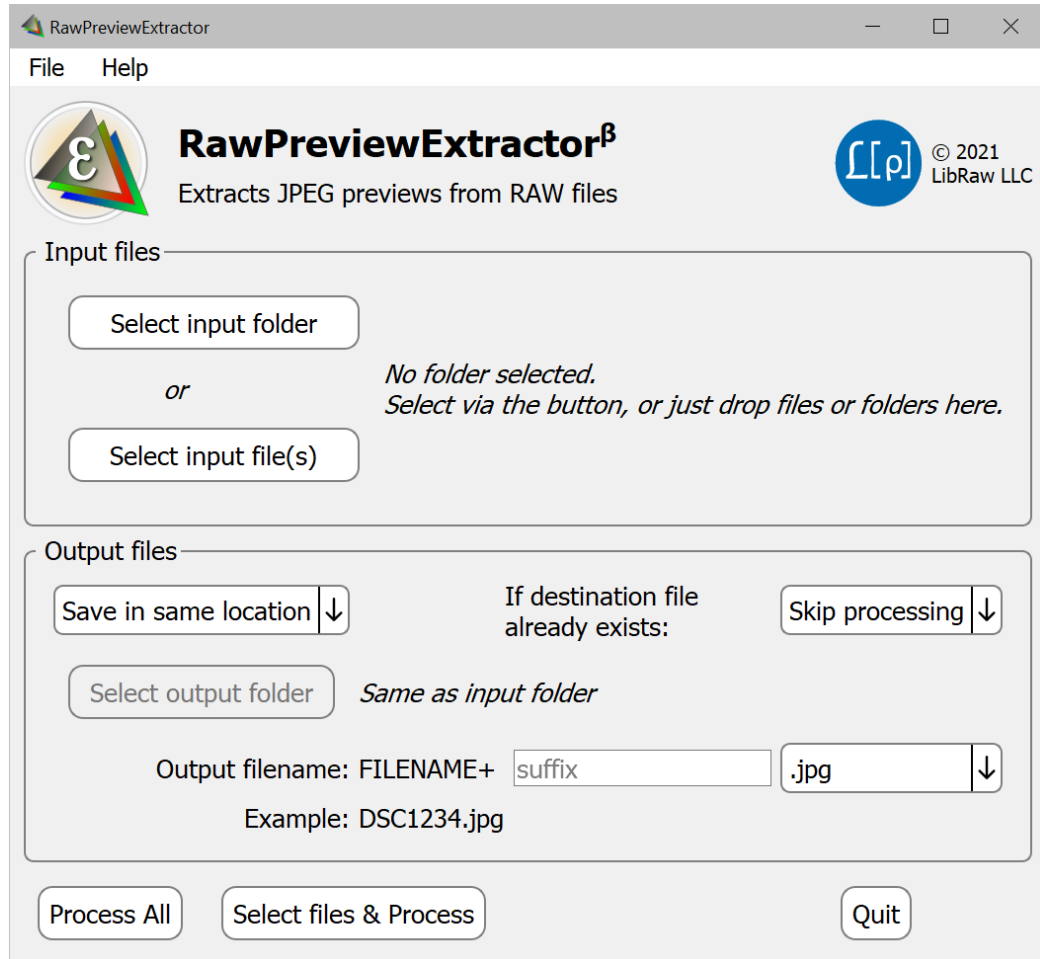
- Windows: you can delete the application through **PC Settings – Apps** or through **Windows Menu – All Programs – LibRaw – RawPreviewExtractor – Uninstall**
- Mac: drag the application from the Applications folder into the trash bin.

RawPreviewExtractor does not install any system, nor any services, file associations, etc., so no additional actions are necessary when deleting the application.



Using the Application

After launching the application, you will see its main window:



The main window of the **RawPreviewExtractor** window contains the following zones:

- **Input Files:** setting which folders or files are to be processed
 - **Select input folder:** launches the dialog to select an input folder
 - **Select input file(s):** launches the dialog to select input file(s); you can select several (through Ctrl-Click/Command-Click)
 - Aside from selecting through the Select input folder/Select input file(s), files and folders can be passed into processing by Drag-and-Dropping into the application window, including several files/folders at once.
macOS: we recommend dropping into the application window, rather than using the application icon in the Dock; only this way can you pass several files/folders into the application at once.
- **Output Files:** setting file output:
 - Where to save the files
 - **Save in same location** – in the same folder as the original file
 - **Save in new location** – in another folder (the same for all input folders)



- **Save in subfolder** – create a subfolder with the specified name in each folder with source files and save the result in it.

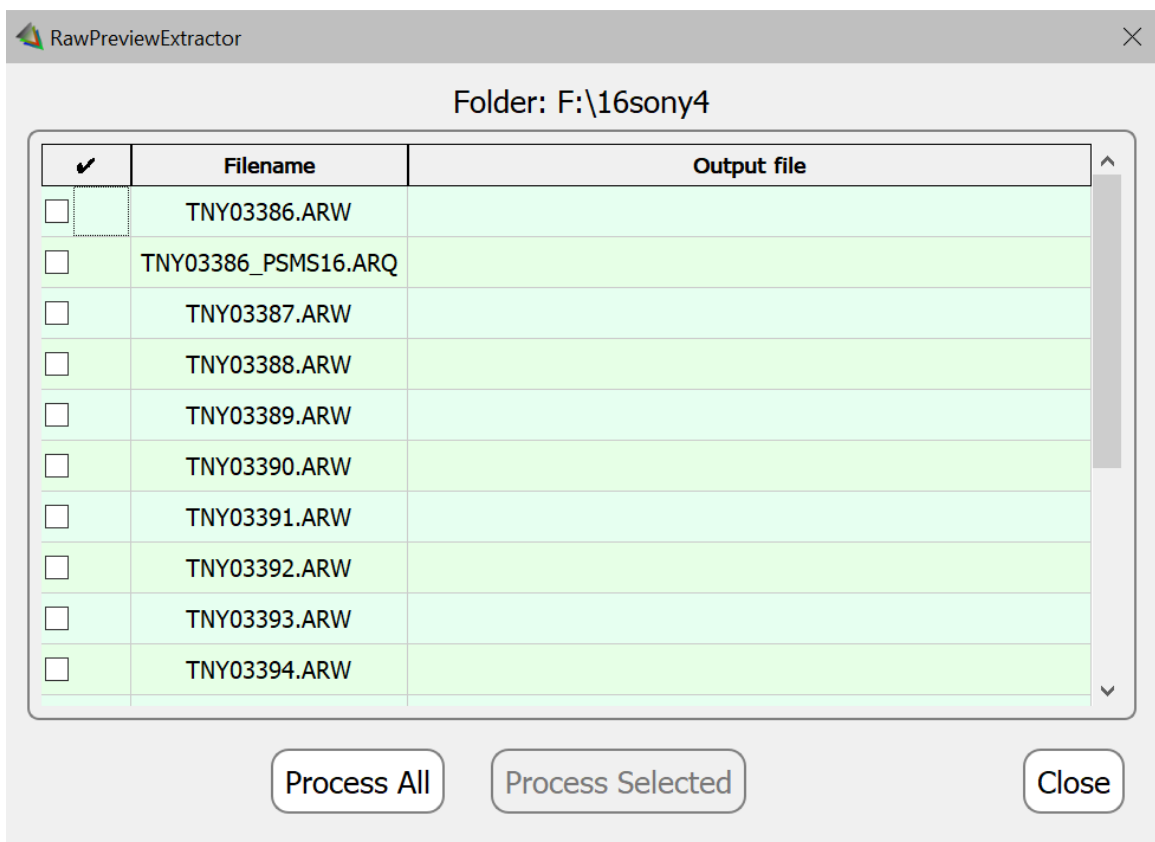
When this option is selected, a subfolder name entry field appears

- **If destination file already exists:** skip, rewrite, append –(1) to the name.
- **Output filename:** the name of the JPEG file being saved is constructed from the name of the input file, an optional suffix, and one of four possible extensions.

- **Button block:**

- **Process All:** process all files in the selected folder (or all of the selected files)
- **Select files & Process:** select which files are to be processed
- **Quit:** exit the application

When pressing the Process All/Select files & Process buttons, a window that displays the selection and processing progress will open:



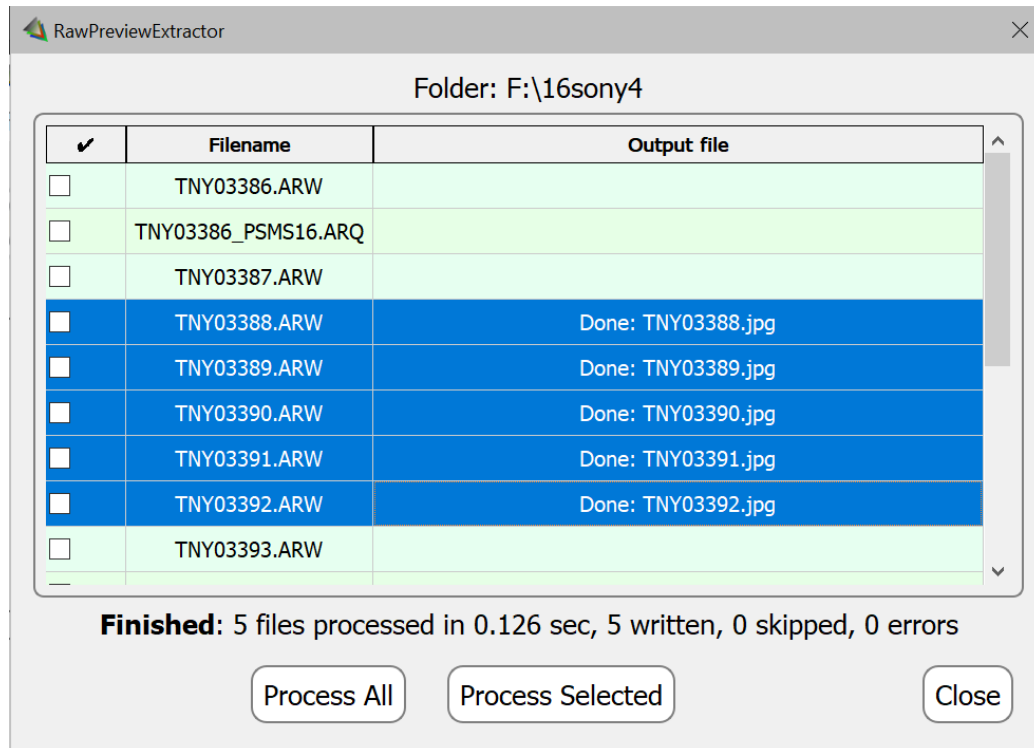
If the files being processed are located in different folders, then an additional Folder column will be added.

In this window, you can select which files are to be processed:

- Checkmarks in the left column
- Setting/unsetting all of the checkmarks in the window header
- Selecting one or several lines using the mouse ((Shift-Click sets a range, Ctrl-Click/Command-Click changes which line is selected).
- If more than one line is selected, then the checkbox in the window header will invert the checkmarks for the selected lines.



The selected files can be processed using the Process Selected button. The Process All button processes all of the files in the list. While processing, the Output File column will display the progress and when it's finished the processing window will display the processing results:



For each file processed (in the example we used the Process Selected button), a status (Done) and the name of the saved file will be displayed. Aside from Done, there are other possible statuses (no JPEG preview, no RAW file, an output file already exists).

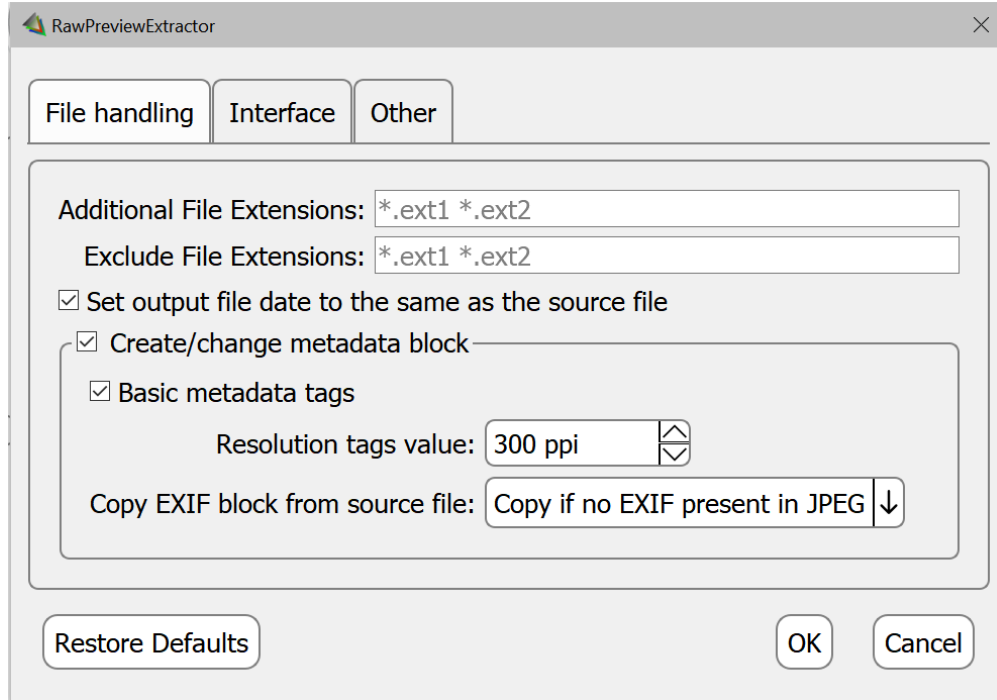
If during the JPEG write operation a fatal error occurred (for example, it is impossible to create a folder or file, or the input file is damaged), then the corresponding lines in the results table will have a red background.



Application settings

The application settings dialog can be opened via:

- Windows: **Menu – File – Preferences** or Ctrl-P
- macOS: **Menu – RawPreviewExtractor – Preferences** or Command-,



In the **File handling** tab:

- **Additional File Extensions:** the list of additional extensions for processing (aside from the default list that is built into the application)
- **Exclude File Extensions:** the list of file extensions that should be ignored.

The settings for file extensions only affect folder processing (which files in the folder will end up in the list of files to be processed). When selecting individual files through the Drag-and-Drop or via Select Input file(s) button, you can use the 'All files' option and process files with any extension.

- **Set output file date to the same as the source file:** the date and time of the file with the extracted JPEG will be set to be the same as the source RAW file
 - **Copy EXIF block from source file:** whether to copy the EXIF block from the original RAW:
 - **Do not copy** – do not copy
 - **Copy if no EXIF present in JPEG** – copy only if there is no EXIF block in the embedded JPEG
 - **Always copy** – always copy, replacing the existing EXIF block (if any)

In the **Interface** tab:

- **Base font size:** the base font size, which is used to calculate all the other sizes in the application windows (size of the window, size of the buttons).

In the **Other** tab:



- **Updates check frequency:** how frequently to check for updates.

Feedback

We would be very happy to hear from our users via:

- The [section in our forum](#)
- The [feedback form](#)
- E-mail: rpe-feedback@libraw.com

Copyrights

RawPreviewExtractor Copyright © 2021, LibRaw LLC, <https://www.libraw.com>

LibRaw library Copyright © 2008-2021, LibRaw LLC, <https://www.libraw.com>

Qt 5.12 Copyright © 2016 The Qt Company Ltd.

DNG SDK Copyright © 2006 Adobe Systems Incorporated

Changelog

Version 0.1: Initial public release

Version 0.2: Minimal EXIF block with Orientation tag created to handle portrait orientation

Version 0.3: recording a full-fledged EXIF block, the ability to save files in a subfolder of the current folder.

Version 0.4: embedded LibRaw library updated to handle more RAW files flavours

