

FastRawViewer



Tips for a Quick Start (version for Windows)



Index

Getting familiar with the FRV Tools and Features

How to Customize FastRawViewer	4
Preferences #1	5
Preferences #2	6
Examining Shortcuts #1	7
Examining Shortcuts #2	8
Adjusting Shortcuts #3.....	9
Interface Customization #1	10
Interface Customization #2	11
Interface Customization #3	12
Interface Customization #4	13
Bottom Bar	14
Color Management	15
EXIF View	16
Working with Removable Media	17



Working with Folder Tree	18
Favorite Folders	19
Grid View/Single File View Modes #1	20
Grid View/Single File View Modes #2	21
Rating and Labels	22
File Sort & Filter #1	23
File Sort & Filter #2	24
File Selection/Batch Operation #1	25
File Selection/Batch Operation #2	26

Assessing the Image

Tools and Features	27
Matching Image Display #1	28
Matching Image Display #2	29
Over- and Underexposure #1	30
Over- and Underexposure #2.....	31
In-Focus Areas	32



Sharpness33

Shadows34

Highlights.....35

Exposure Correction #136

Exposure Correction #2.....37

White Balance Presets.....38

Custom White Balance39

White Balance Display40

Tuning White Balance41

Contrast42

Time-saver

Getting Ready for RAW Conversion #143

Getting Ready for RAW Conversion #244

Propagation45

Propagation to Sidecar Files46

How to Customize FastRawViewer

Preferences

- **Menu -> File -> Preferences**

A Gear Icon at the Top of Panels or Bars



Quick Start Tips

- **Menu -> Help -> Usage tips**
- **<http://www.fastrawviewer.com/tips-and-videos>**
(to download in .pdf format)

Keyboard Shortcut Editor

- **Menu -> File -> Keyboard Shortcuts**

User Manual

- *comes with the installation of FastRawViewer*
- **Menu -> Help -> Online manual**
- **<http://www.fastrawviewer.com/usermanual>**
(can be downloaded in .pdf format as well)

Customer Support

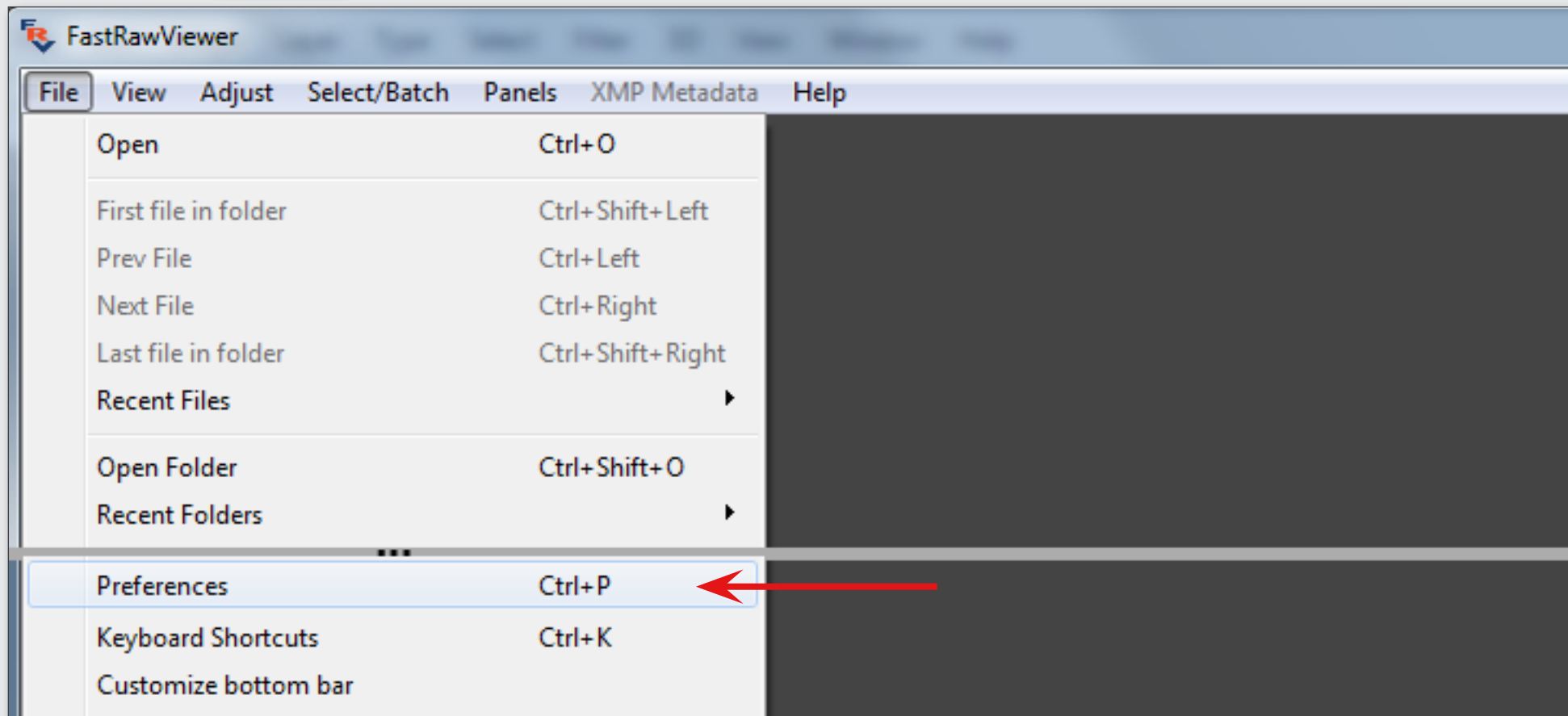
- **support@fastrawviewer.com**

Tuning Preferences (#1)

Preferences allow to set useful features, including tailoring to your needs the modes that facilitate file browsing, image inspection, further raw processing, image presentation, etc. For example, to enable certain *Focus Peaking* modes, look into Preferences.

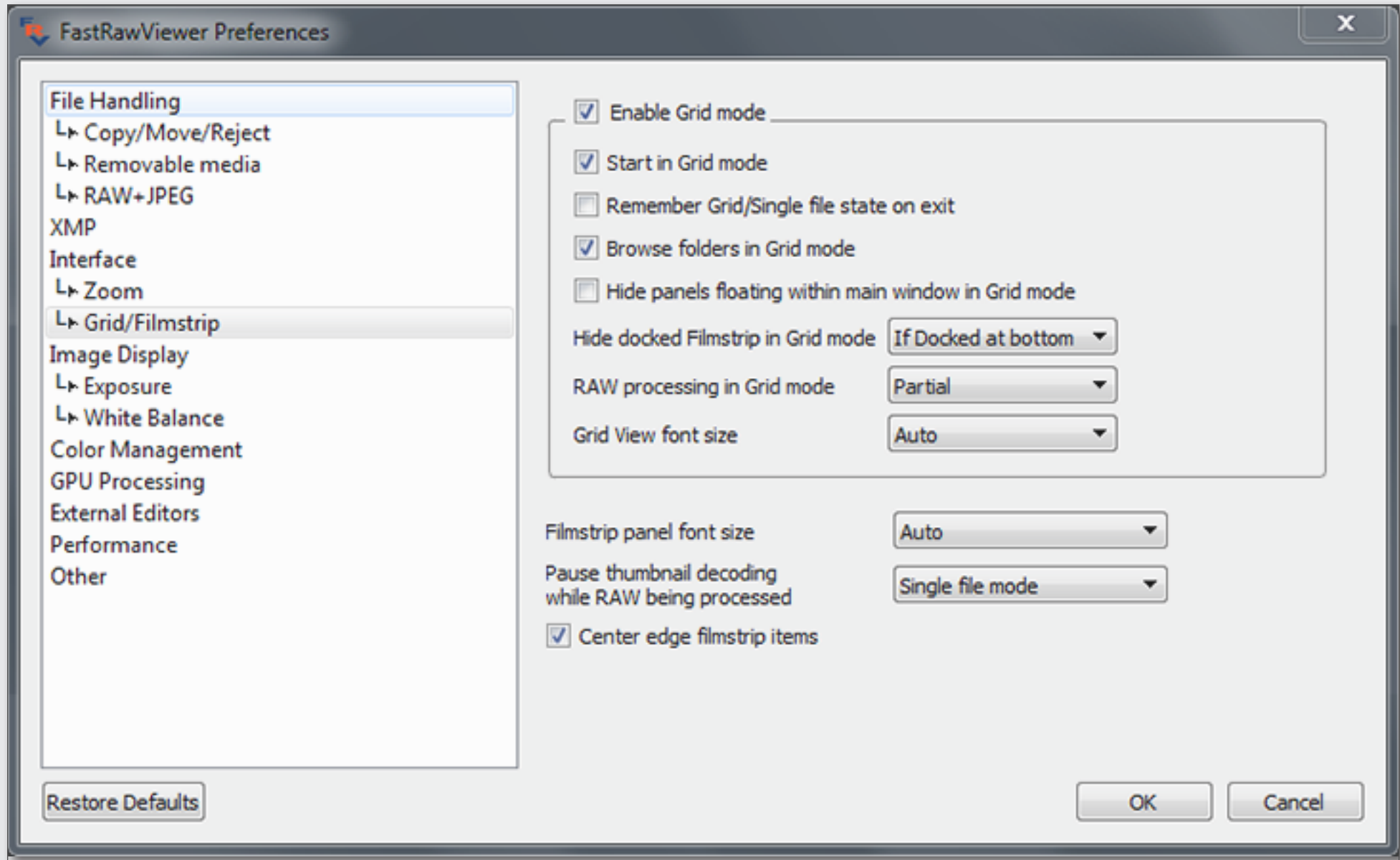
Spending some time on Preferences will help you understand FastRawViewer better and use it more efficiently:

- Press **Ctrl+P** or **Menu -> File -> Preferences**



Tuning Preferences (#2)

If you feel that some feature is missing or inconvenient, or you don't know how to set it, please check the Preferences menu and adjust as necessary, and if it is not there, please email us or visit our forum.

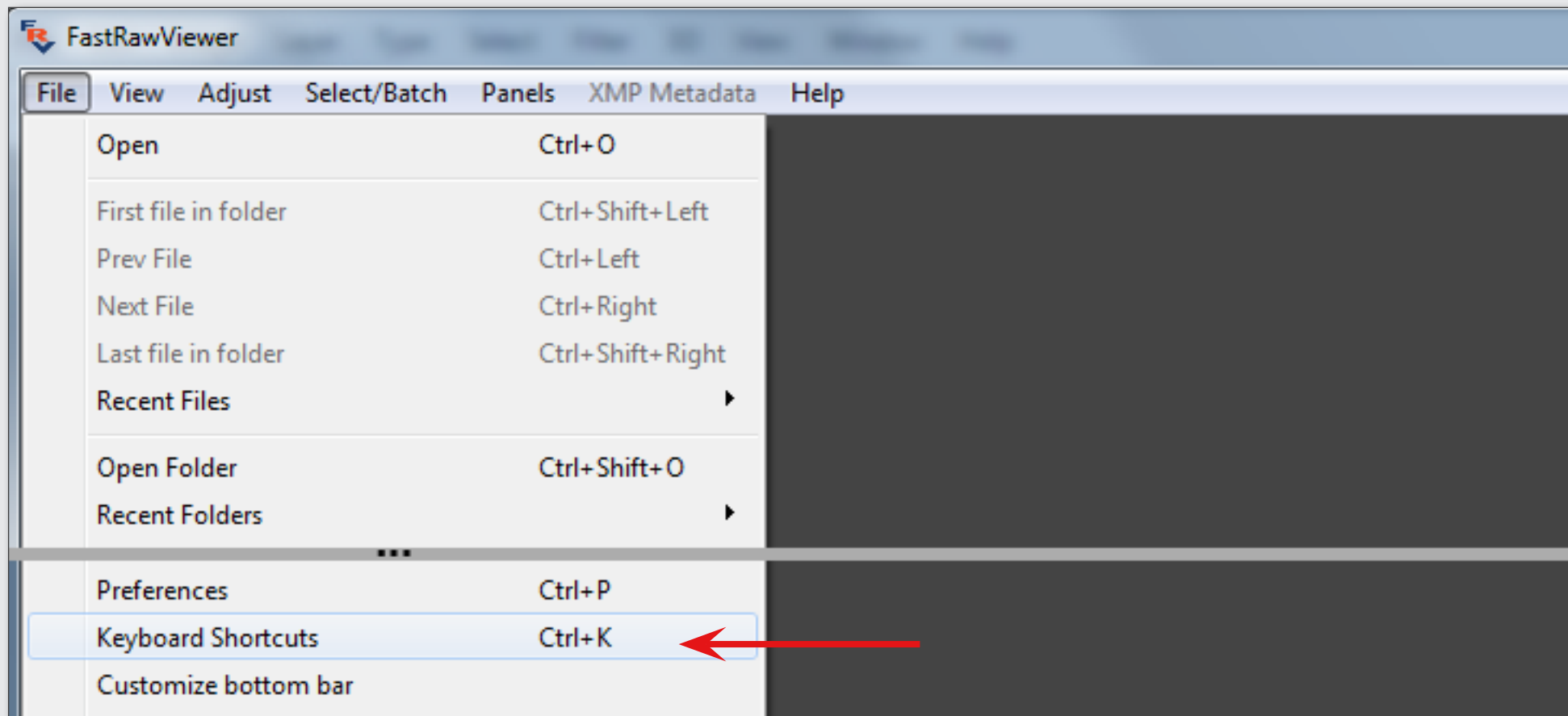


Examining Keyboard/Mouse Controls (#1)

FastRawViewer is designed to be controlled mostly with keyboard and mouse, without much reaching for menus.

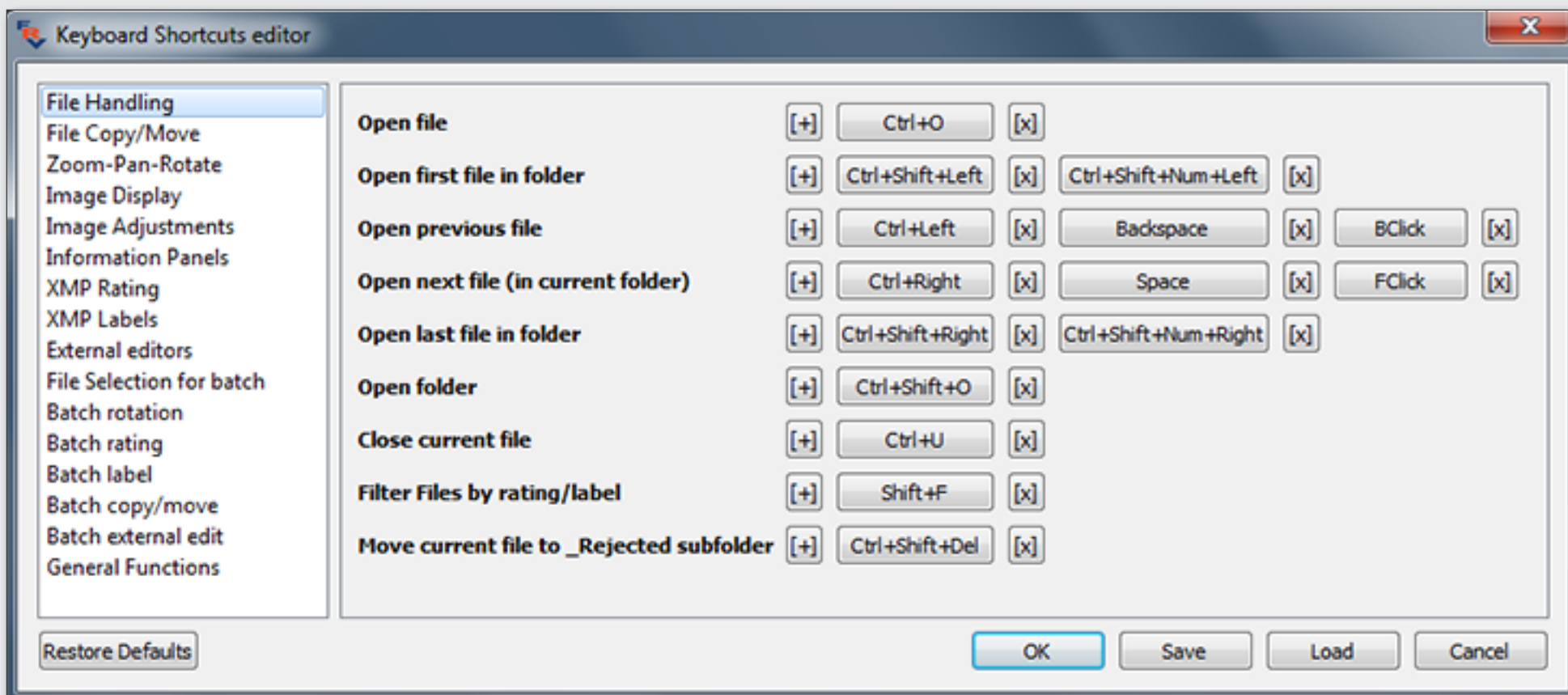
You can examine the default/current key/mouse control combinations and change them to your preferred ones anytime:

- Press **Ctrl+K** or **Menu -> File -> Keyboard Shortcuts**



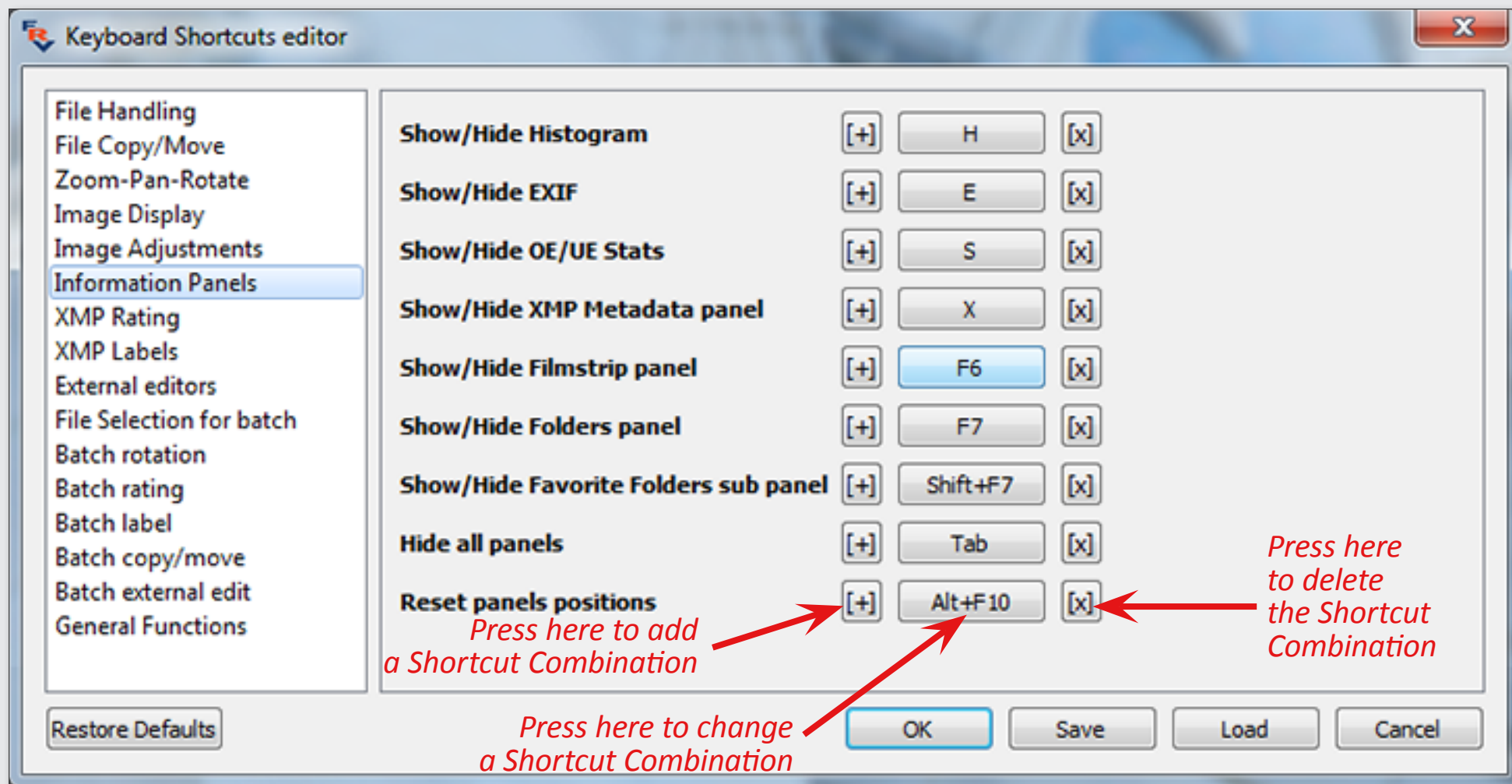
Examining Keyboard/Mouse Controls (#2)

We suggest that you spend some time familiarizing yourself with the shortcuts with the help of the **Keyboard Shortcuts Menu, tips**, and **FastRawViewer Manual**; it is not just an overview of the program (*that is, showing what can be done in FastRawViewer*), but will also help you to do more things in less time.



Changing Keyboard/Mouse Controls

Many features are already pre-programmed and assigned to shortcuts. Nevertheless you can change the shortcuts so that they will be similar to the ones you use with other graphic programs.

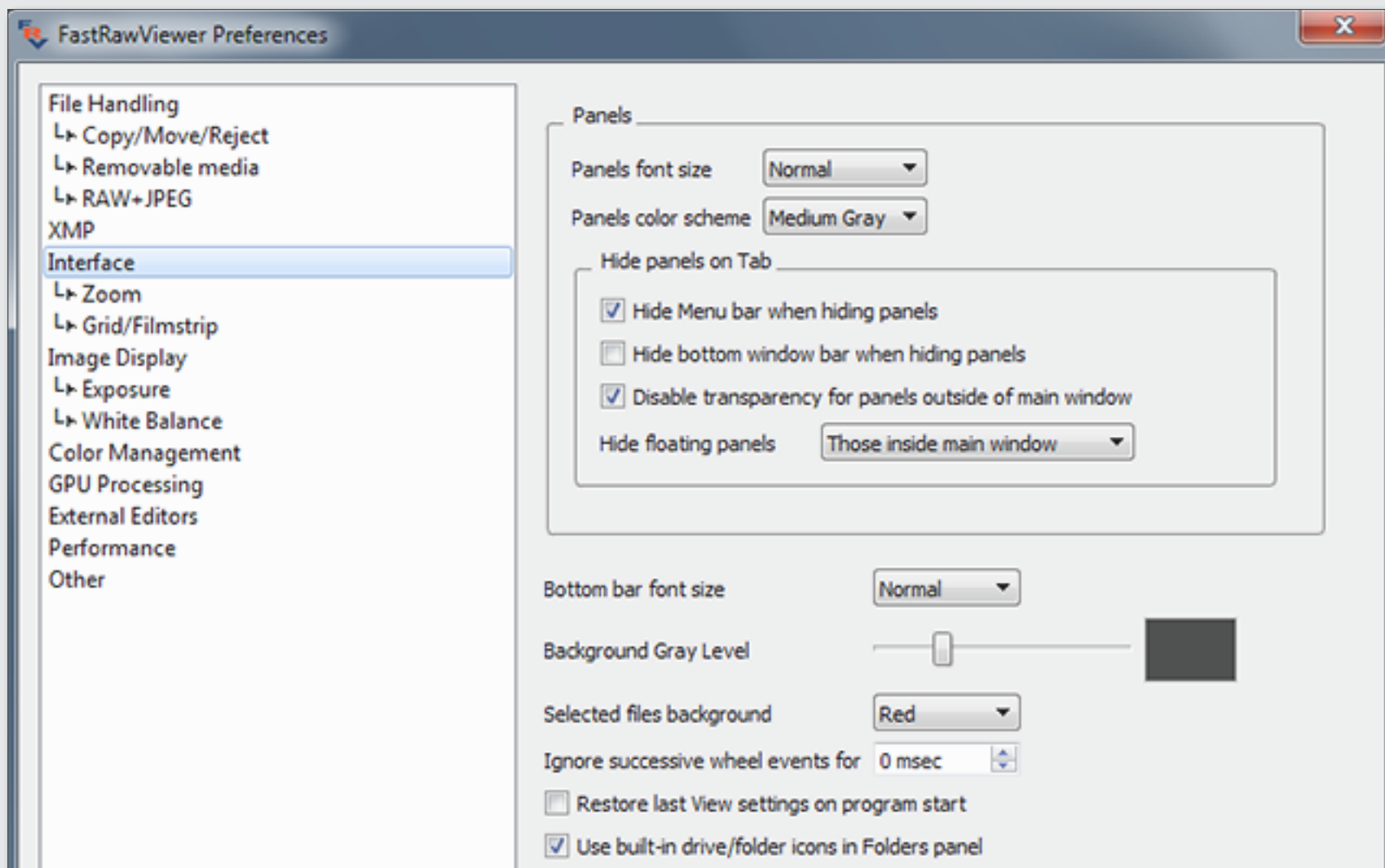


If you feel that some feature or shortcut is missing or inconvenient, please check the **Keyboard Shortcuts Editor** and adjust as necessary, and if it is not there, please let us know.

Changing Background, Panels Color Scheme and Font Size

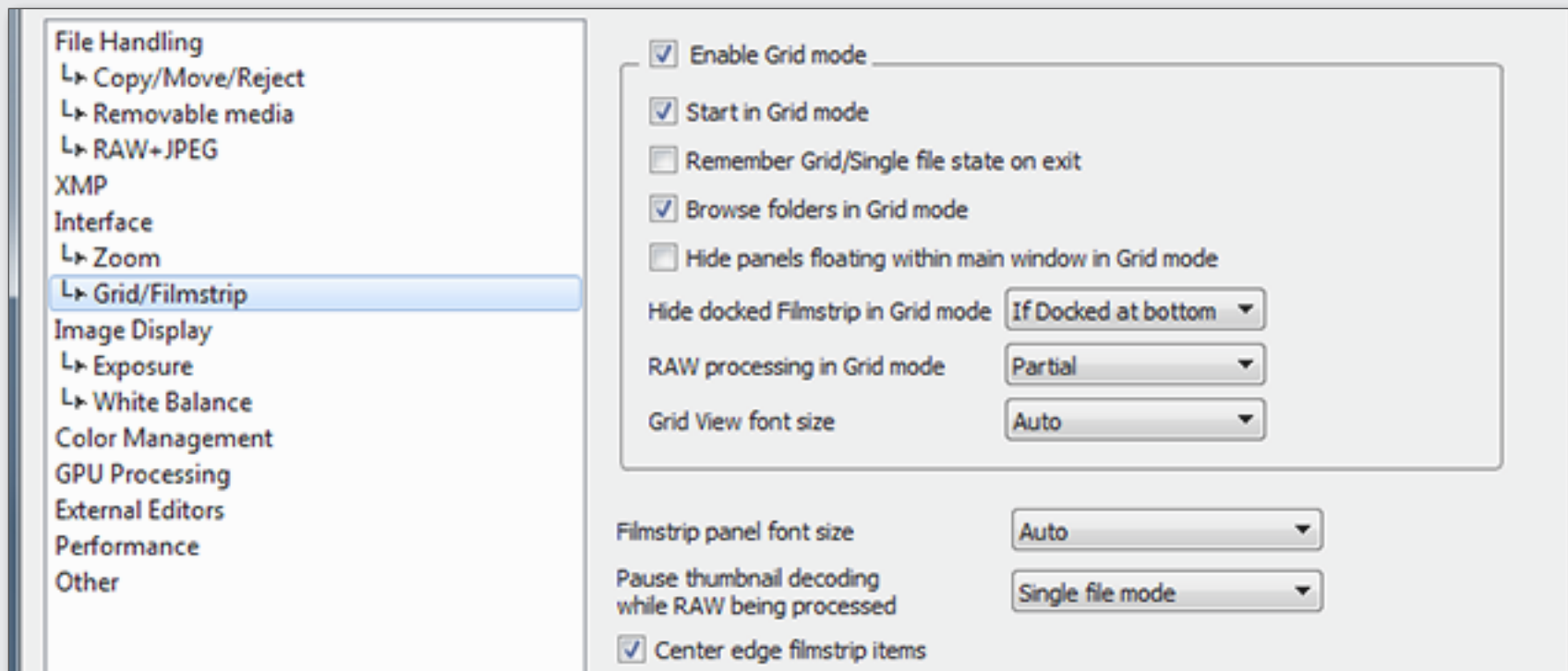
Menu -> File -> Preferences -> Interface

The background or panel color scheme can be changed to any shade of grey, from black to white. Also, the bottom bar or panel's font size can be changed.



Tuning Settings for Grid View and Filmstrip Panel

- Menu -> File -> Preferences -> Grid/Filmstrip



Switching between Grid View and Single Image View Modes

- Menu -> View -> *Switch to single image/Switch to Grid view*

or **G**

Control Panel Display in Grid View Mode

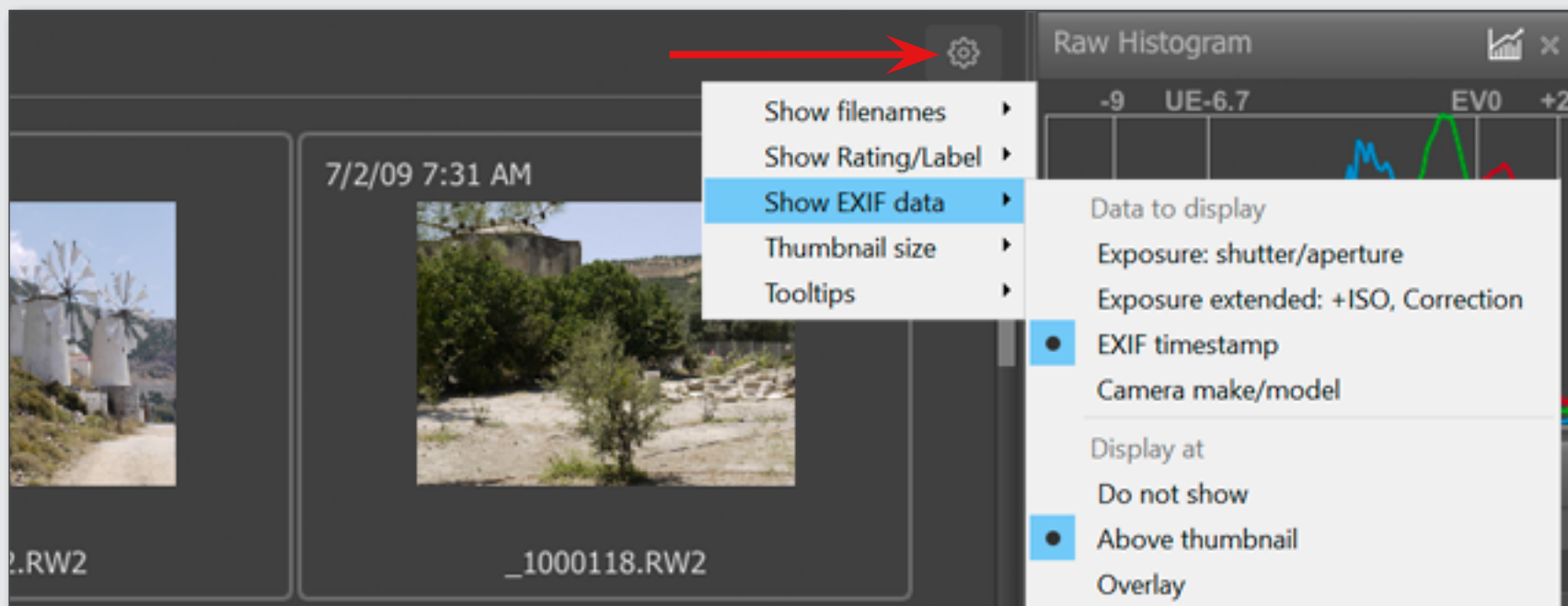
To switch display of the Histogram and the Exposure Statistics for the selected image in Grid mode “on” and “off” press *a graph icon* at the Raw Histogram Panel.



Choosing EXIF Data to be Displayed

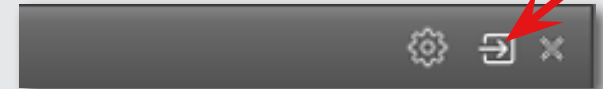
EXIF data is now displayed in Grid Mode without any additional user actions.

EXIF data can now be displayed right in the Grid/Filmstrip above the thumbnail or below the thumbnail. The settings for EXIF data display are accessible through the “*gear icon*” separately for the Grid and Filmstrip modes.



Arranging Panels

1. All panels can be placed anywhere on the screen or even other monitor — *just drag-and-drop it where you want it to be.*
2. If the Filmstrip panel is outside the program window, it can be easily organized into a light-table.
3. The filmstrip can be docked at the top, bottom, or left side of the main window. All other panels — at the right or left side. You can dock a panel to the most recent docking position by pressing *an arrow icon.*



Panels and Filmstrip Settings Customization

A little gear icon at the top right corner of a panel (*or the top left corner of the filmstrip placed at the bottom*) allows customization of the panel or bar.



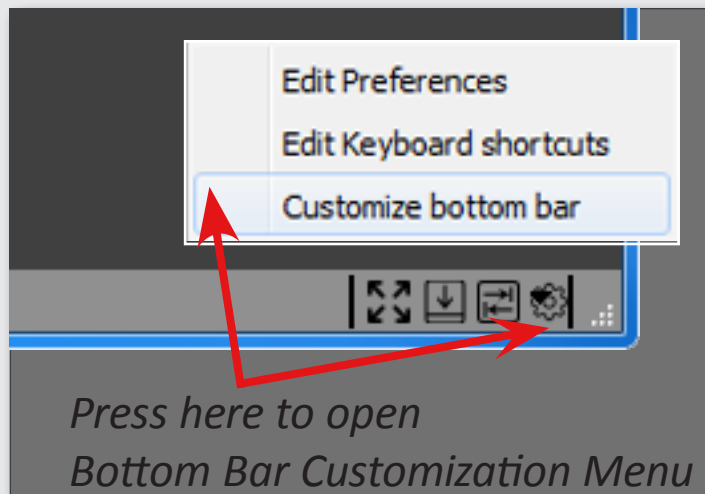
Toggle Panel Display

1. Every panel can be toggled open and closed through:
 - **Menu -> Panels** or a keyboard shortcut (*default or assigned*)To change panels keyboard shortcuts, please look at:
 - **Menu -> File -> Keyboard Shortcuts -> Information Panels**
2. The **Tab** key toggles all presented on the screen panels *hide* and *unhide* together.

Bottom Bar Customization

1. Open Bottom Bar Customization Dialog

- Through the *gear icon* at the lower right corner of the **Bottom Bar**:



or through

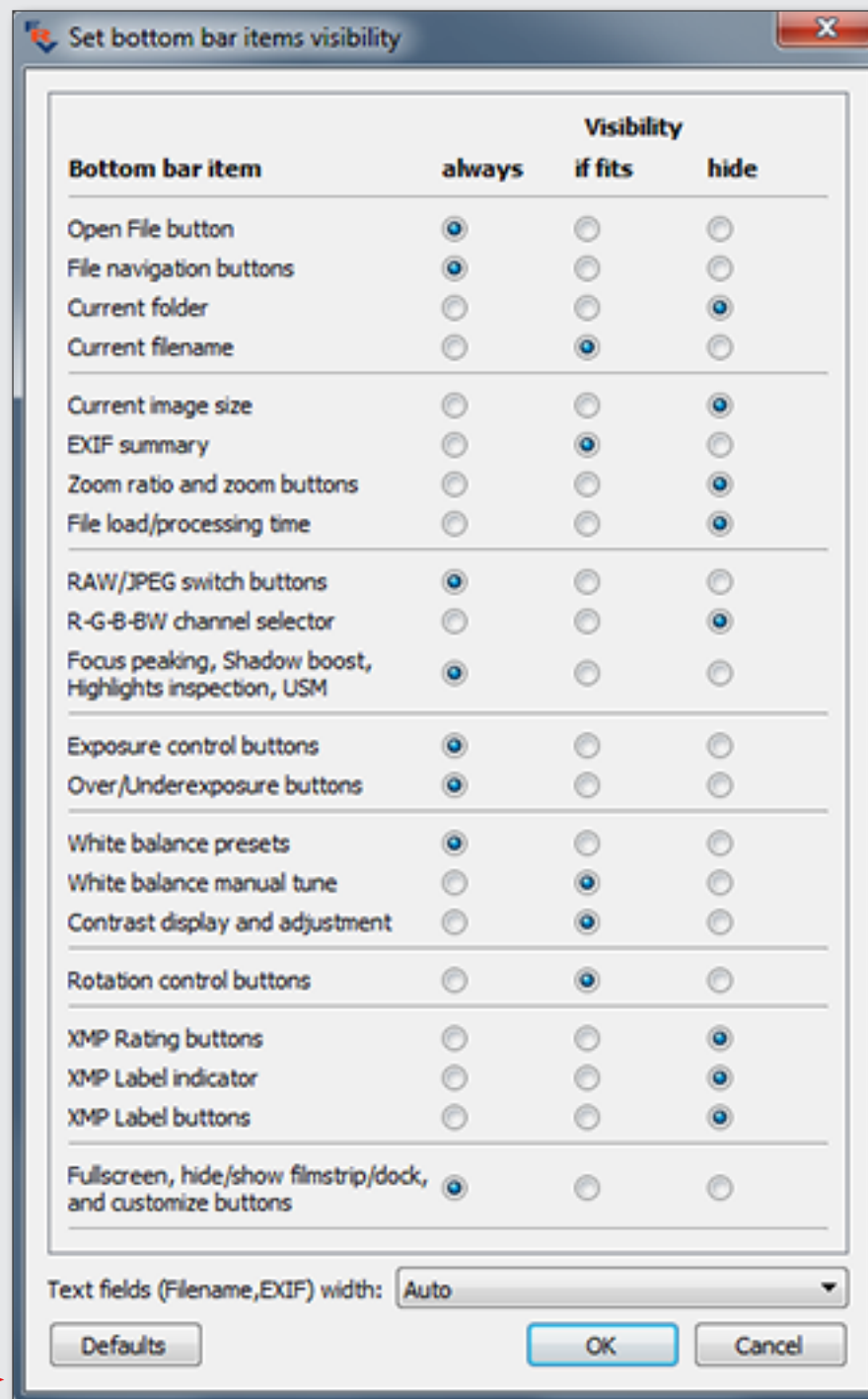
- Menu -> File -> Customize bottom bar**

or through

- Menu -> File -> Preferences -> Interface**

press the button 

- ### 2. At the Bottom Bar Customization Dialog choose Bottom Bar options to be displayed (see the image to the right).




Color Management

Menu -> File -> Preferences -> Color Management

If you use Custom monitor profile

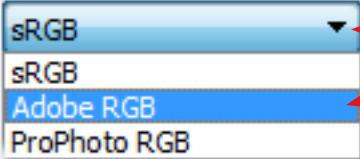
Do not override if the system color profile is already the one you want to use; in this case *“Use color profile of display”* is enough.

Use color profile of display upon which FastRawViewer launches
(Profile description: sRGB IEC61966-2.1)

Override display color profile: 

If you use a Wide Gamut monitor

Try to use **Adobe RGB** as the selected color space (*“RAW processing color space”* field)

RAW processing color space 

Color space for untagged JPEGs

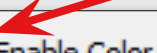
If your Custom monitor profile is accurate

You may benefit from selecting **ProPhoto RGB** (*“RAW processing color space”* field)

If you use a generic monitor with a canned profile

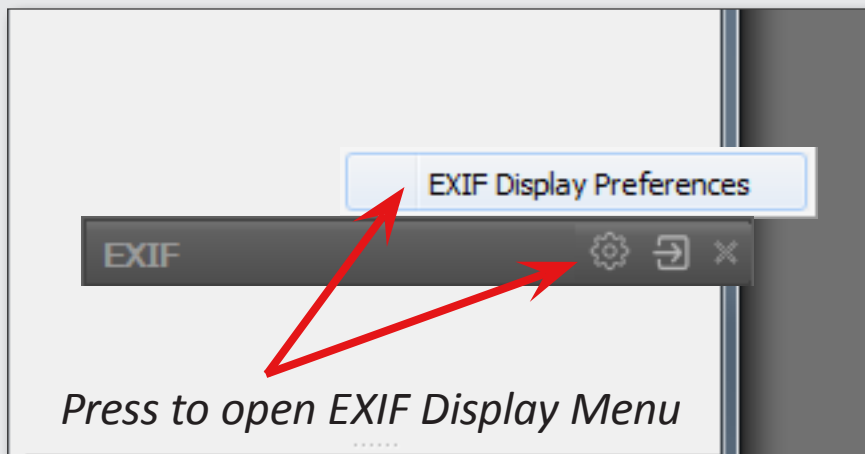
The image may look better with color management **off**

(leave the box *“Enable Color Management”* at the top of Color Management Menu unchecked)

Enable Color Management 

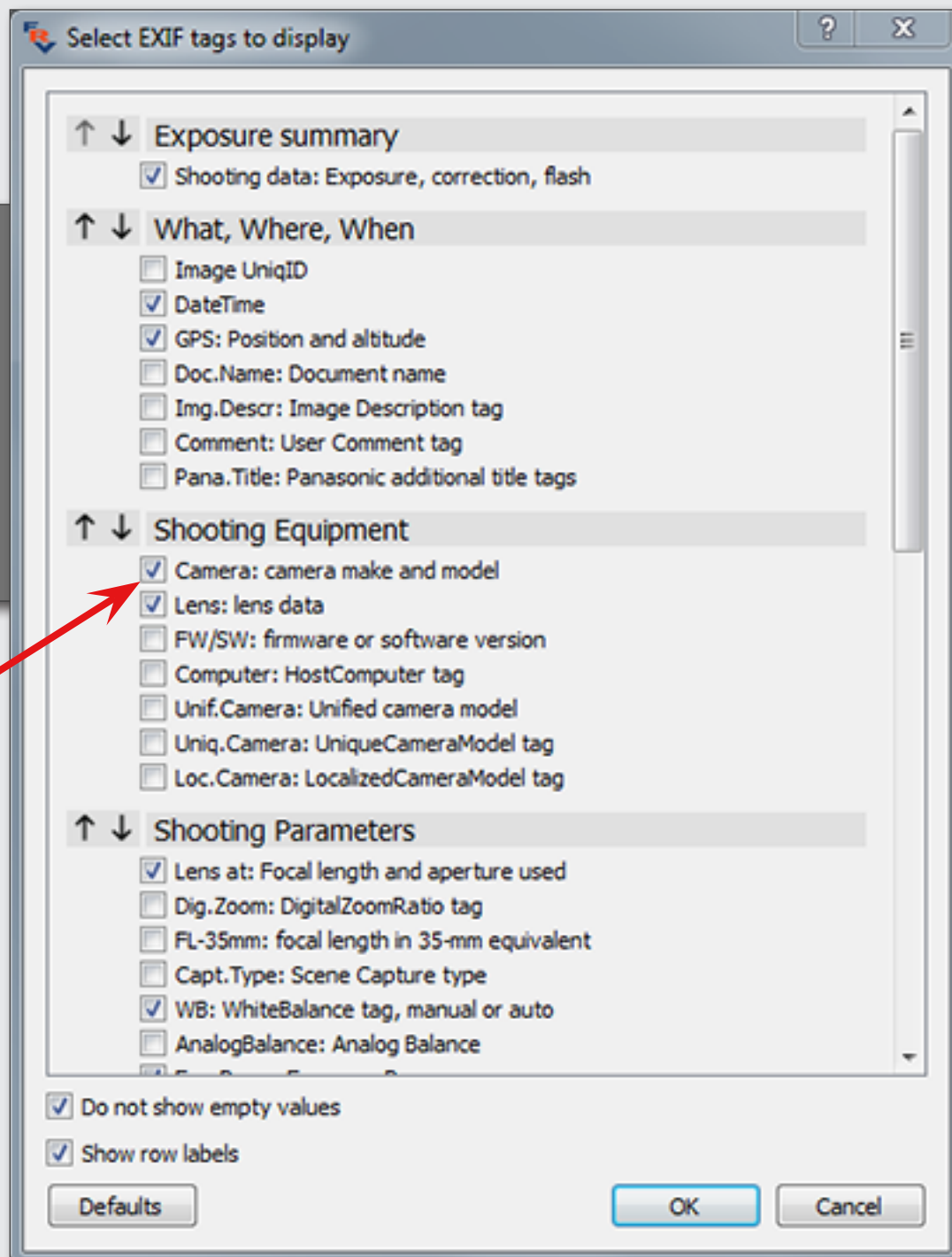
Customization of EXIF Fields display

1. At the top right corner of the



EXIF Window:

2. Choose EXIF fields to be displayed
(see the image to the right).

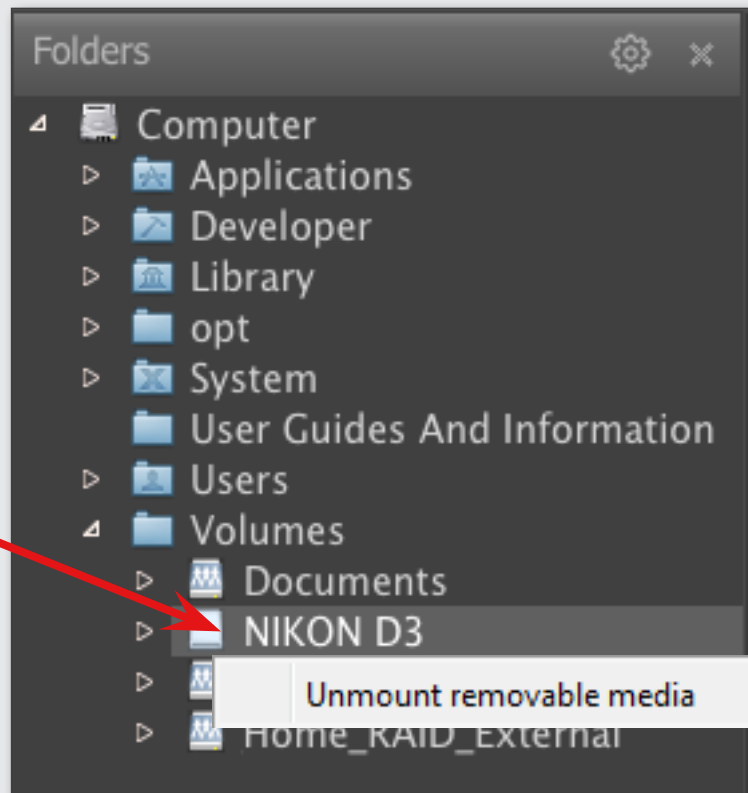


Access Files and Folders Using Folders Panel

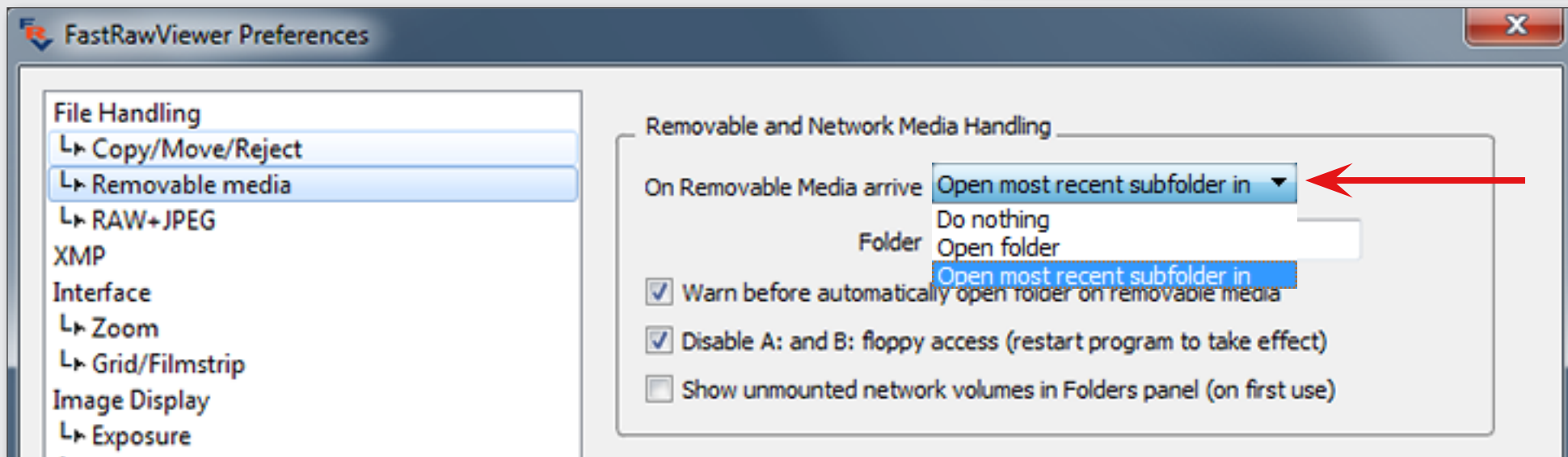
Folders and files can be accessed through a folder tree.

Working with a Memory Card

1. When you mount removable media in your system, it will immediately appear in the folder tree.
2. If you don't need it anymore, you can eject it directly through the Folder panel (*right click on removable media folder name and choose "Unmount removable media"*).
3. You can have the most recently created subfolder on the removable media be opened in the DCIM folder:



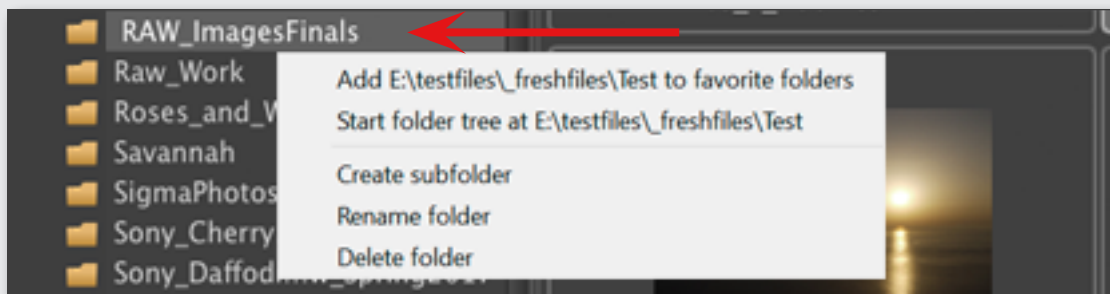
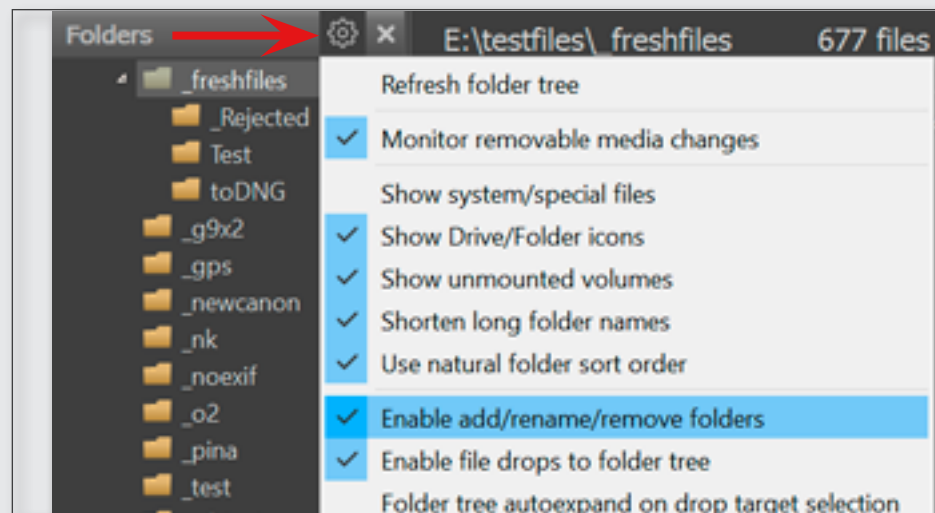
Menu -> File -> Preferences -> Removable media



Editing the Folder Tree

The Folder panel settings now contain a setting to **Enable add/rename/remove folders** (access through gear icon).

Also here you can disable Drag and Drop from Grid/Filmstrip/Single View to the folder tree (enabled by default) and switch on **Folder tree autoexpand on drop target selection**.



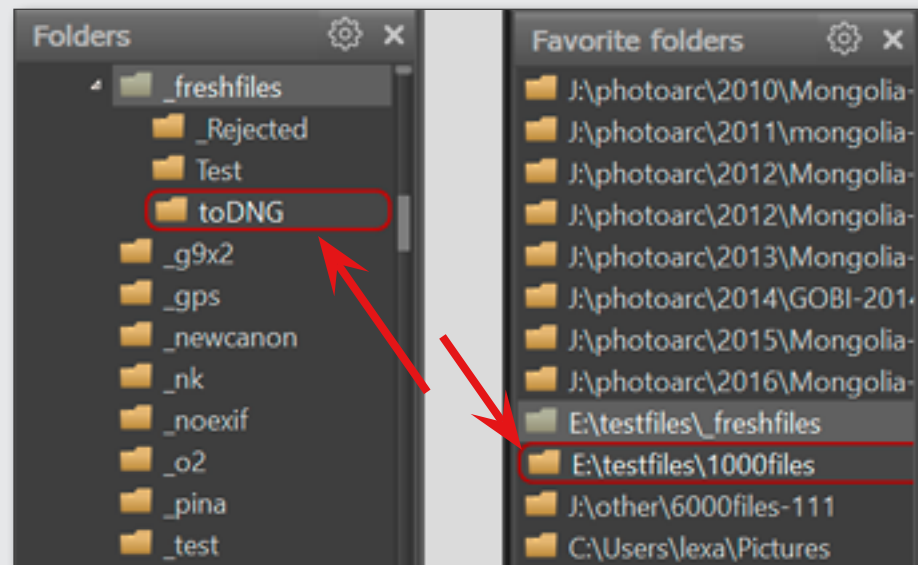
When **Enable add/rename/remove folders** is on, you can choose the desired action in the context menu (right-click on the folder):

Drag-and-Drop Files to Folder Tree

The folder which is currently under the drop cursor is automatically highlighted in red.

You can not only drop files into the Folders panel, but also into the Favorite Folders panel.

With default settings, the dropped file is copied, not moved.

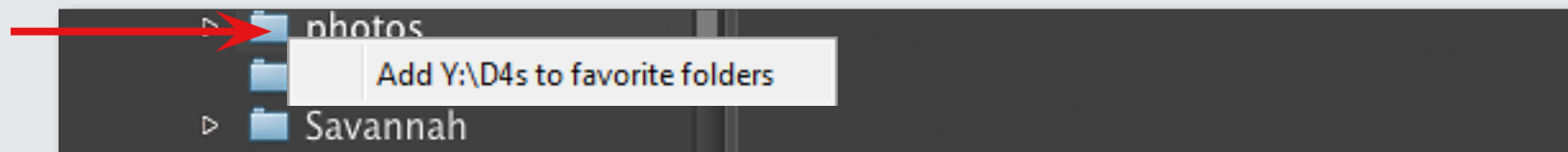


Working with the Favorite Folders Panel

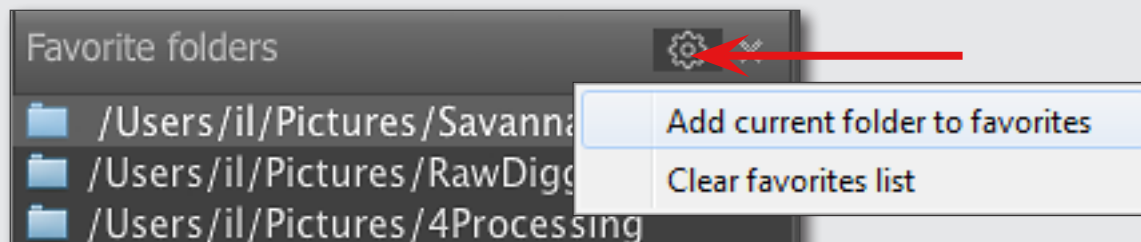
This panel allows one to keep a list of often-used folders, and lets one readily access them.

Add a Folder to Favorite Folders

1. Right-click on the selected folder in the Folder tree and use the appearing context menu.

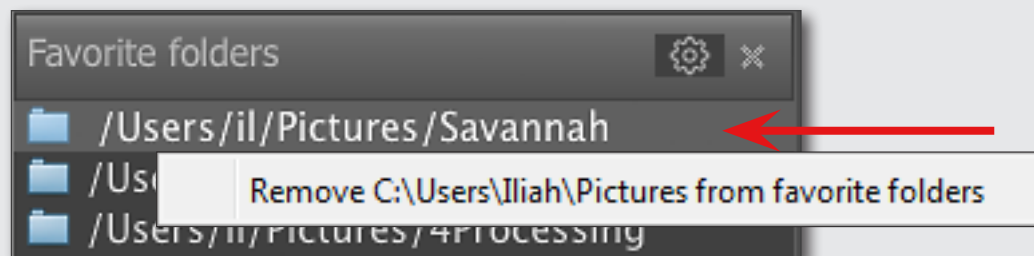


2. Highlight the selected folder in the *Folder Tree* and press the **Gear** icon on the *Favorite Folders* panel to access the context menu.



Remove a Folder from Favorite Folders

1. Right-click on the selected folder in the *Favorite Folders* and use the appearing context menu.



Open folders

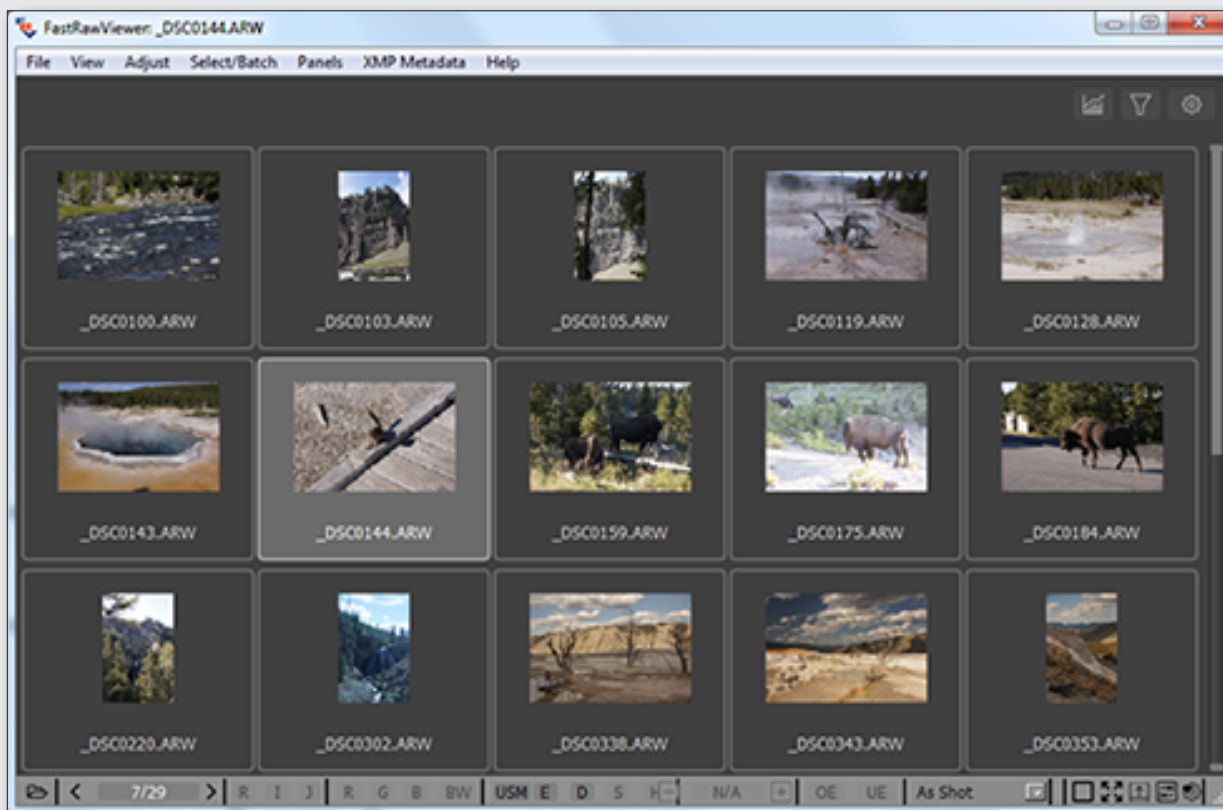
2. A click on an item (folder) in this list opens the chosen folder in the *Filmstrip/Thumbnails* panel
3. A double-click opens an item in the *Filmstrip/Thumbnails* panel and loads the first file in the main window.

Clear Favorite Folders List

1. Press the **Gear** icon on the *Favorite Folders* panel to access the context menu.

Grid View Mode

If **FastRawViewer** is launched without indicating a filename, it will start in **Grid View** mode, displaying the thumbnail previews of all of the supported files from the selected folder (*current folder, if switched to Grid View mode from Single FileView mode*) :



Navigating files

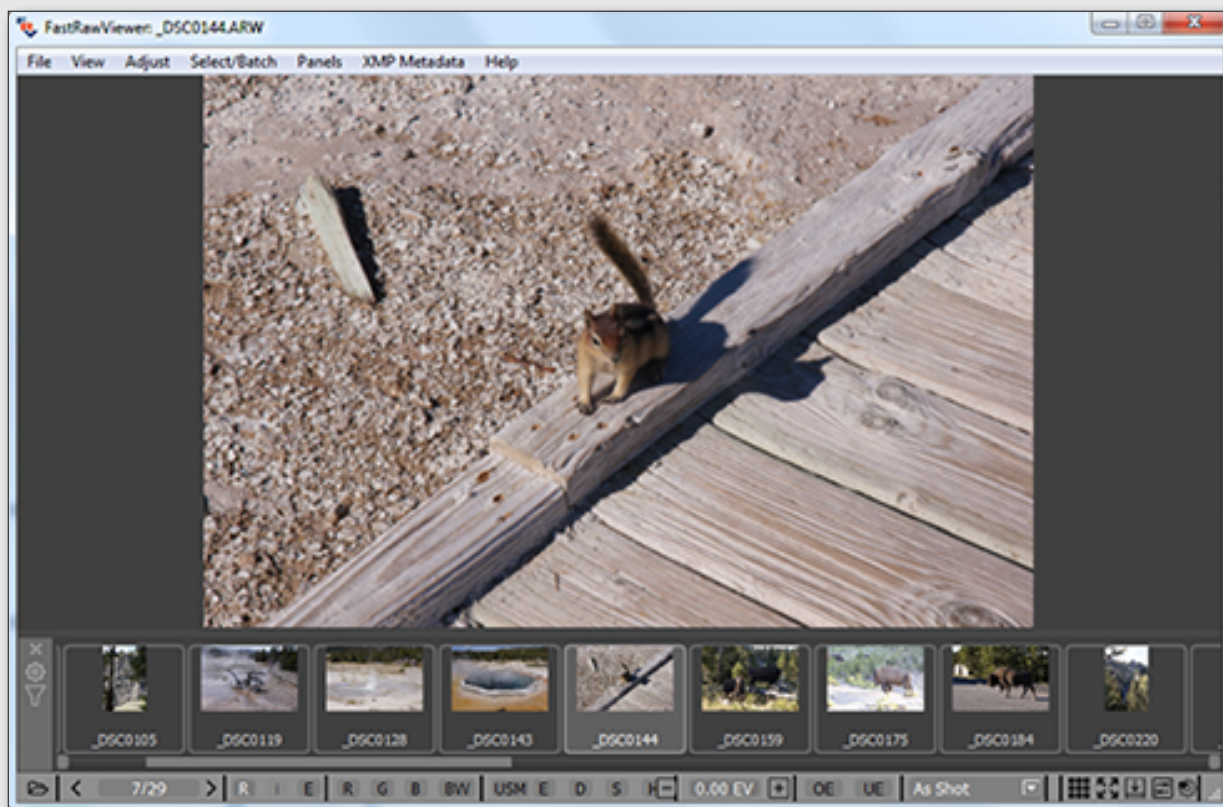
- Keyboard: arrowkeys in the main window, PgUp/PgDn, Home/End; customizable shortcuts for Next File/Prev. File and First/Last File in folder.
- Mouse: the wheel scrolls through the contents of the folder up and down.

Switching to Single File View Mode

- A double-click on a file in the grid or **Enter**
- **Menu -> View -> Switch to single image** or **G**

Single File View Mode

If FastRawViewer is launched over a specific file (for example, by dropping a RAW file onto the program's icon, or by double-clicking a file which is associated with FastRawViewer, etc.) it will start in **Single File View mode**.



Navigating files

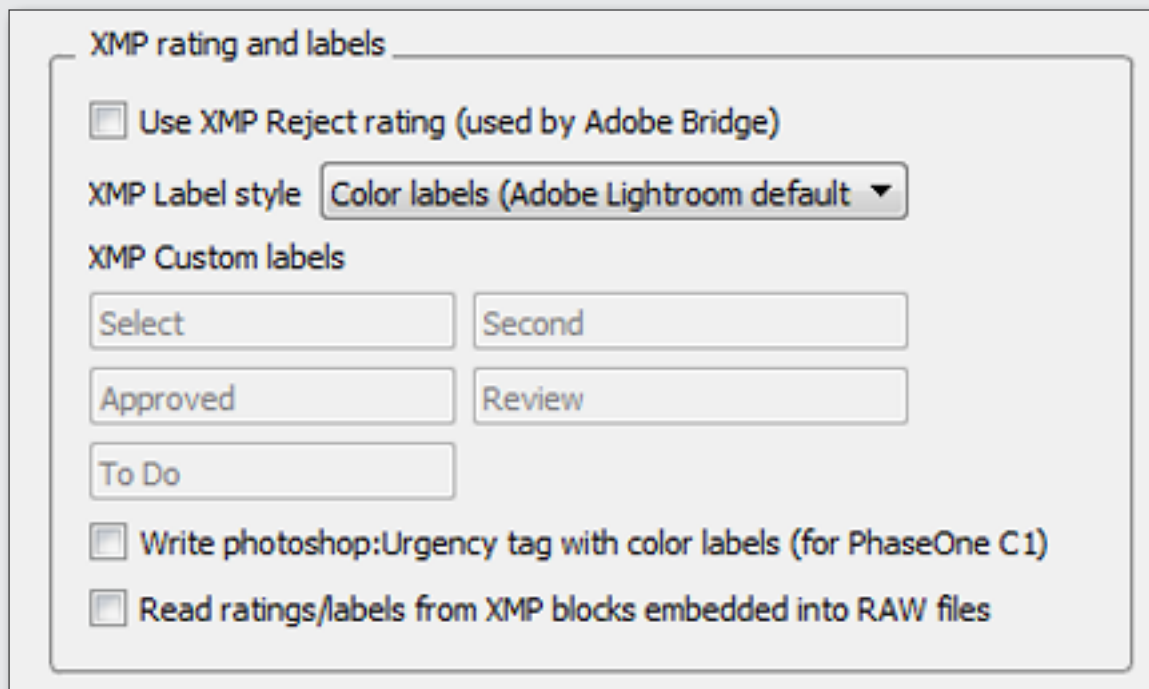
- Keyboard: arrowkeys in the **Filmstrip**, customized shortcuts for **Next File/Prev. File** and **First/Last File** in folder.
- Mouse: the wheel scrolls through the contents of the Filmstrip left and right;
- Buttons for navigating through the current folder: previous file, number of file in the file list and the length of the list, next file;

Switching to Grid View Mode

- **Menu -> View -> Close single image** or **Esc** (*Esc/close single image also exits full screen mode*)
- **Menu -> View -> Switch to single image** or **G**

Choose XMP Label and Rating Style

- **Menu -> File -> Preferences -> XMP**



Assign XMP Label and Rating to the Image

- **Menu -> XMP Metadata** *or* corresponding keyboard shortcuts

Change Keyboard Shortcuts

- **Menu -> File -> Keyboard Shortcuts -> XMP Rating**
- **Menu -> File -> Keyboard Shortcuts -> XMP Labels**

Sort & Filter Panel

The panel **Sort & Filter** controls the sorting and filtration of files.

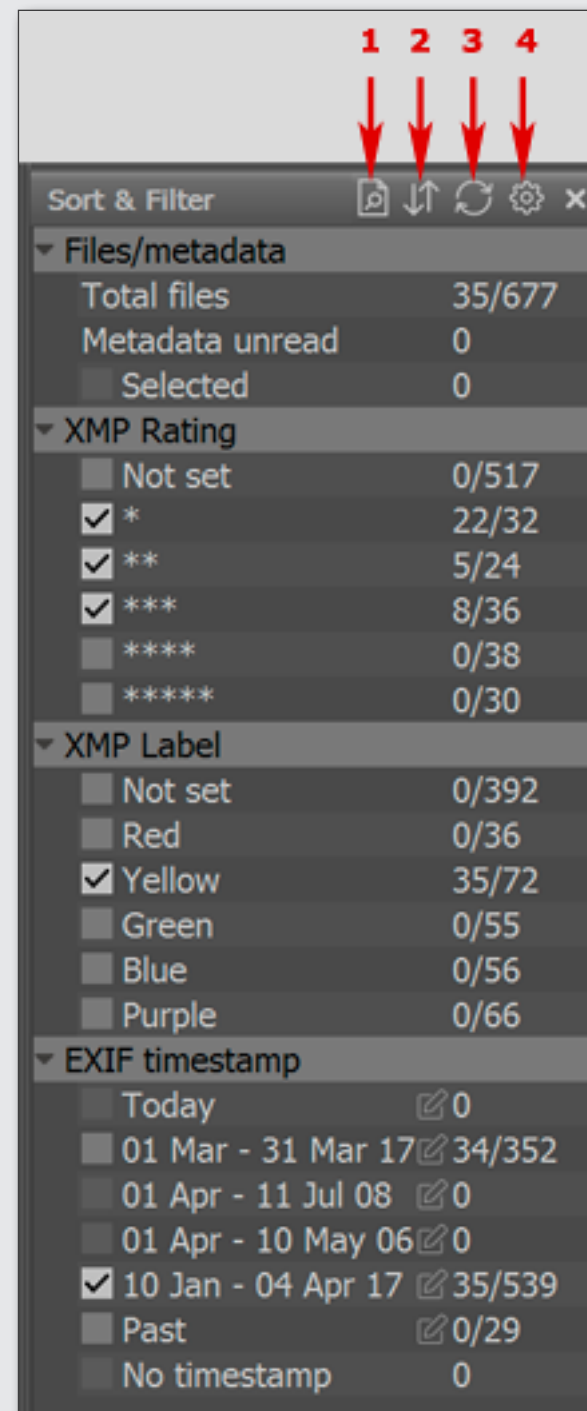
The panel's icons at the title bar are follows:

1. Filter files by name/mask
2. File Sorting
3. Re-reading the current folder
4. Panel Settings.

Sorting: the sorting order can be changed on the fly.

Filtration: checkboxes to the left of the sorting and filtering parameters allows to define conditions, and only files that pass the filtering conditions will be displayed.

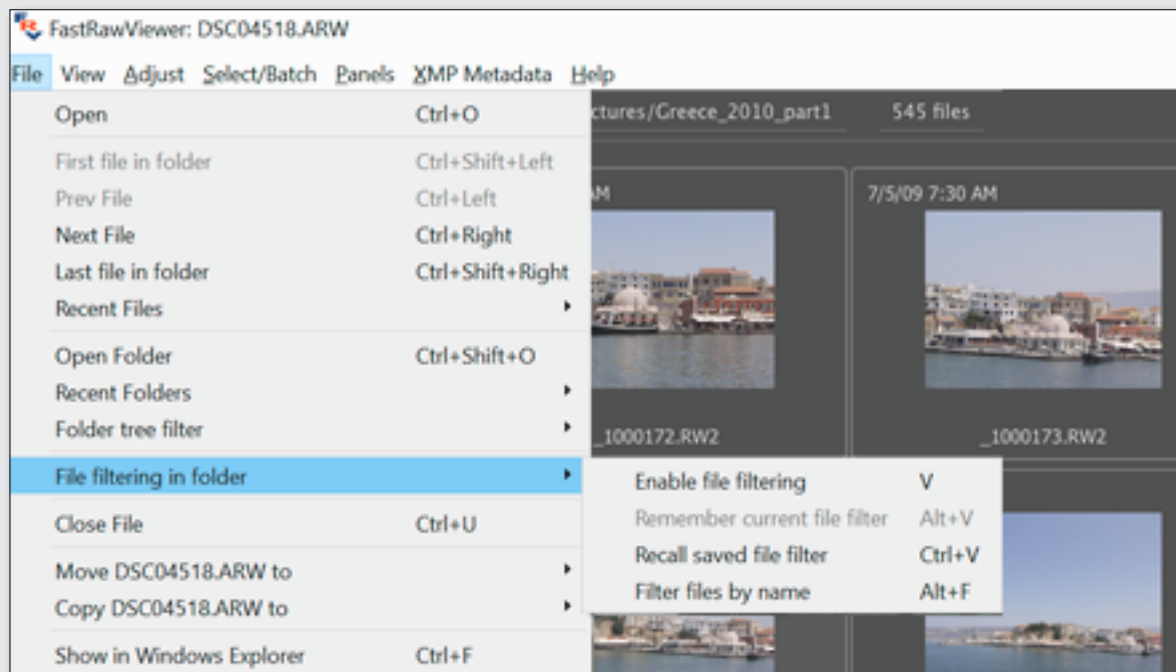
- In **XMP Rating/XMP Label** groups, you can set the desired combination of ratings and labels.
- In the **Exif Timestamp** group, you can select the necessary ranges of dates. You can edit those ranges if necessary.
- **Filtring files by name/mask** allows several different options to define files to be displayed.



Saving, Cancel and Restore Filters

To **Save**, **Cancel**, and **Restore** filters, use:

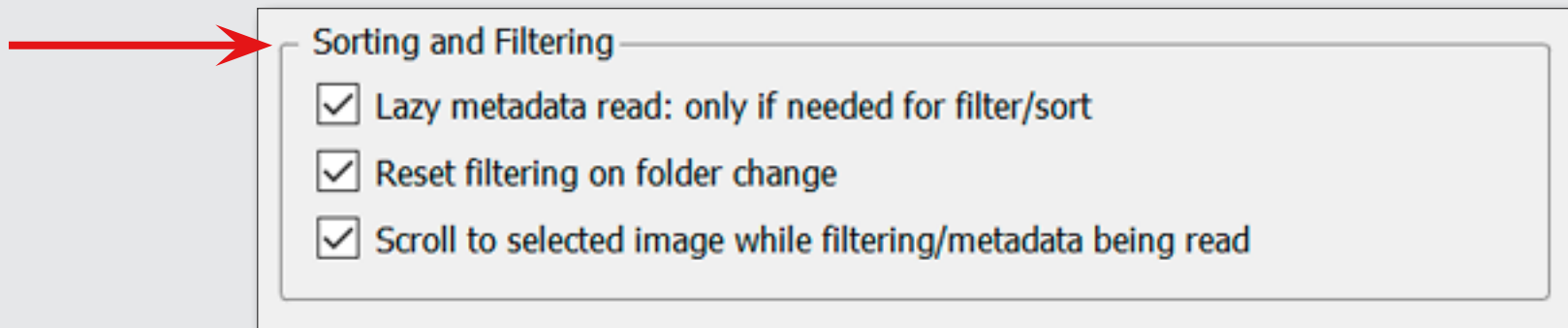
- **File -> File filtering in folder**
or corresponding hotkeys



File Sorting Settings

With standard settings, the metadata (*EXIF*, *XMP*) is read only when this data is needed – for Icon display, or when filtering is on. This accelerates the browsing. This can be changed in the preferences by switching off **File Handling - Sorting and Filtering - Lazy metadata read**.

- **Menu -> File -> Preferences -> File Handling -> Sorting and Filtering**

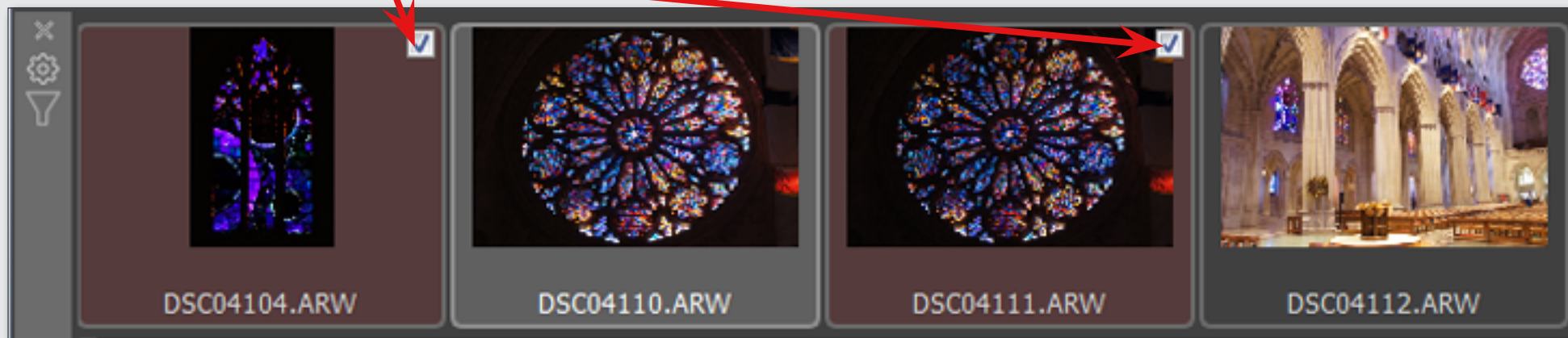


To fulfill **Batch** operations (such as copy, move, rotate, set rating and label etc.) with multiple files you will first have to select those files.

File Selection

To mark a file for group operations in **Grid View** or **Filmstrip** panel:

- **Ctrl-Click** on the file preview thumbnail;
- or*
- Set/unset a checkmark in a checkbox in the upper-right corner of the preview thumbnail (the checkbox appears for the files that are currently unmarked when you hover a mouse over its preview; the checkbox is permanently visible for those files which are already marked).



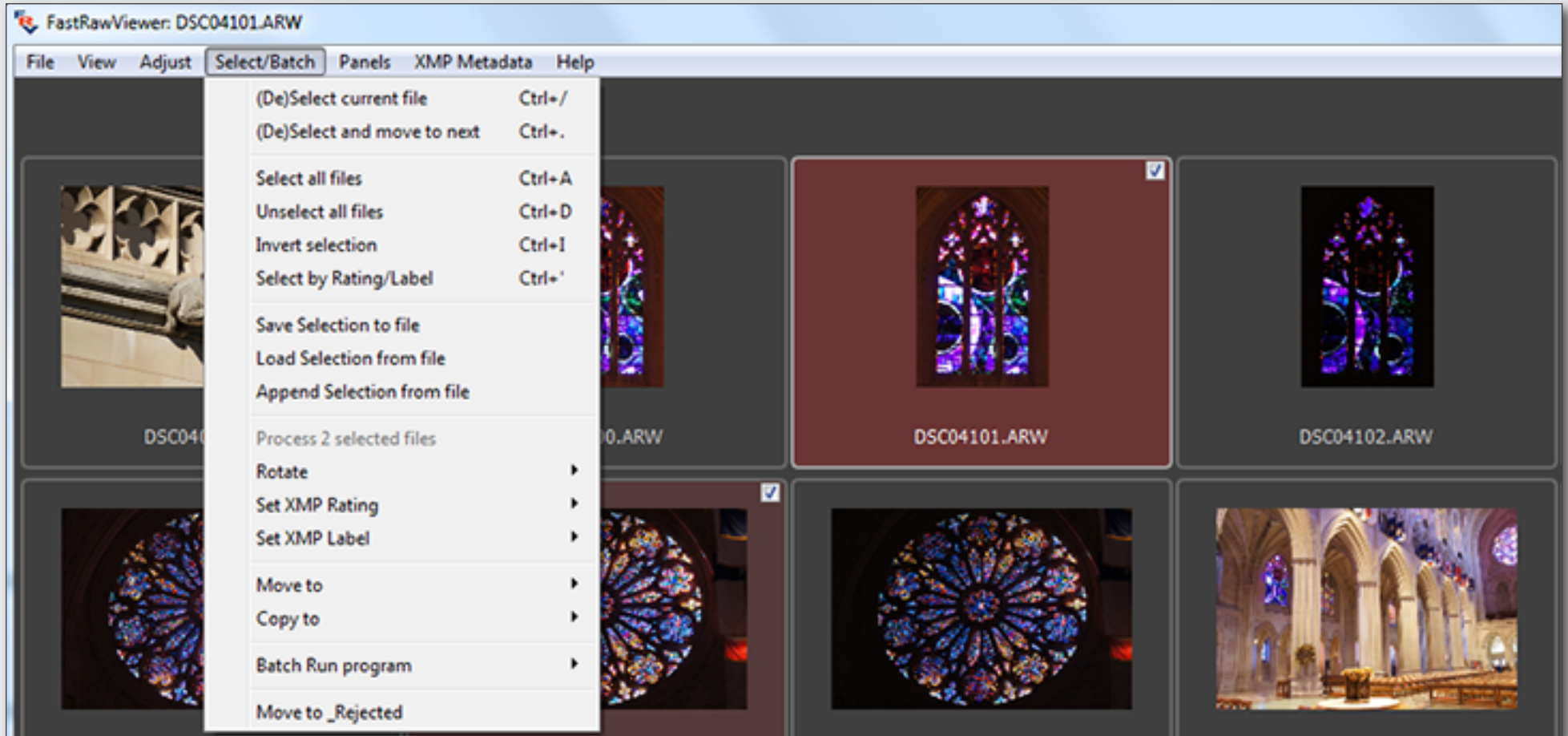
or

- choose the actions through:
Menu -> Select/Batch

Batch Operations

Batch operations for selected files available through:

- **Menu -> Select/Batch** *or* corresponding keyboard shortcuts



- **Context menu** (activated by right-clicking on any of the marked files)

For the sake of safety, batch operations do not have keyboard shortcuts assigned to them. You will have to assign them yourself through:

- **Menu -> Keyboard Shortcut -> Batch rotation/ rating / label /copy/move / external edit**

Of course the composition is a priority while sorting images. If the image you are viewing is composed well next thing you want to know is: if the technical quality of the image good enough.

FastRawViewer offers essential **Image Assessing Tools**:

FastRawViewer Image Assessing Tools

RAW Histogram

Over- and Underexposure Indication and Statistics

Focus Peaking

Screen Sharpening

Shadow Boost

Highlight Inspection

Exposure Compensation

White Balance

Contrast (Tone) Curve

Using these tools is super easy. They can be activated and deactivated through the **Shortcuts**, or the **Bottom Bar**, or through the **Menu**. Parameters for the tools are set through the **Preferences**.

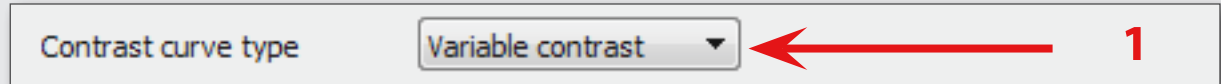
The detailed information about these tools can be found in FastRawViewer manual.

They also briefly covered in tips.

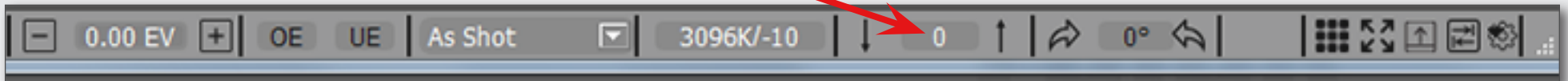
Matching FRV Image Display to Adobe CameraRaw/Lightroom

Defaults should be adequate, if you need to restore just these ones, here are the settings:

1. At the **Menu -> File -> Preferences -> Image Display -> Contrast curve type** choose **Variable Contrast**:

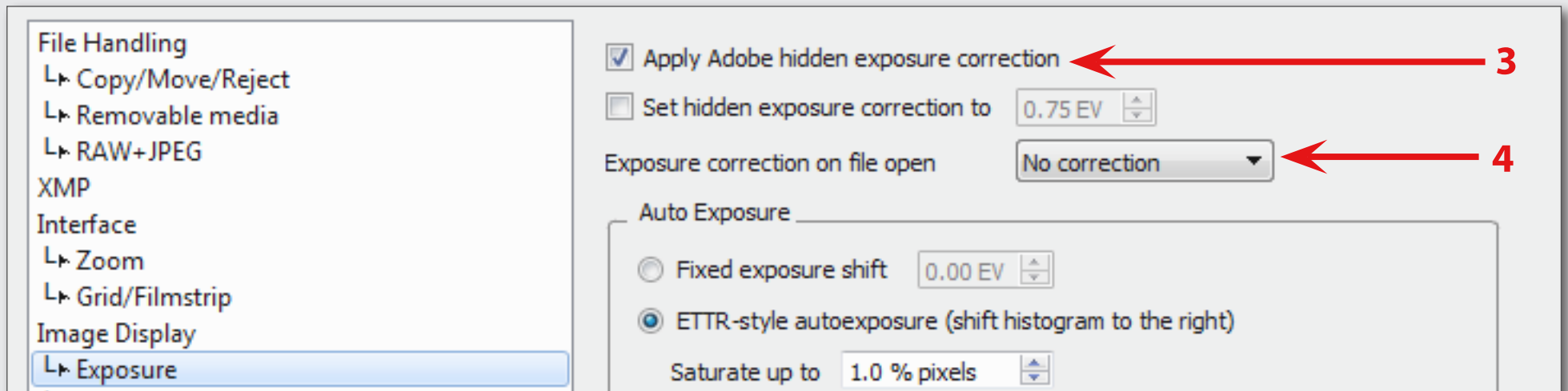


2. At the *Contrast Curve drop-down menu* choose "0" (standard) curve:



At the **Menu -> File -> Preferences -> Exposure**

3. "**Apply Adobe hidden exposure correction**" is "on" (*check the proper box*)
4. Choose **No correction** from the drop-down **Exposure correction on file open**

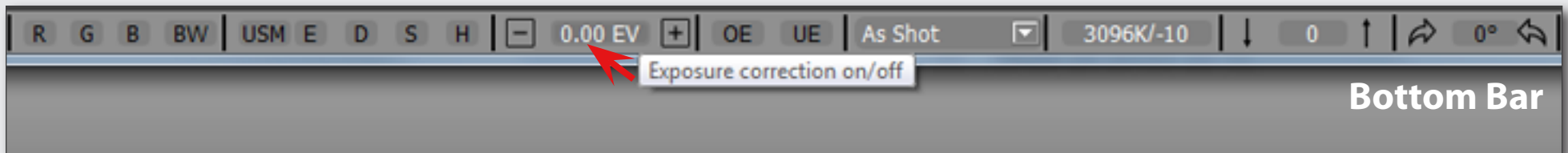


Matching FRV Image Display to RAW Converter

If the image display in FastRawviewer does not match the display in Adobe ACR/Lr or other converter (*brightness is different, color is off, etc.*), please check the following:

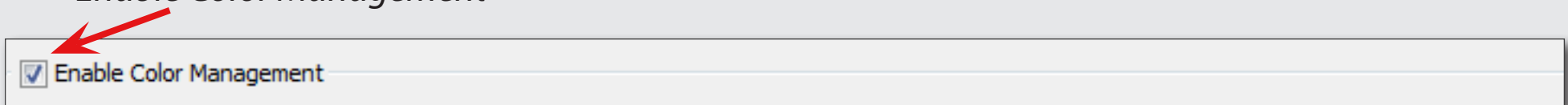
Disable Auto Exposure Correction

- Press **A** *or* Toggle Exposure Correction button at the **Bottom Bar**



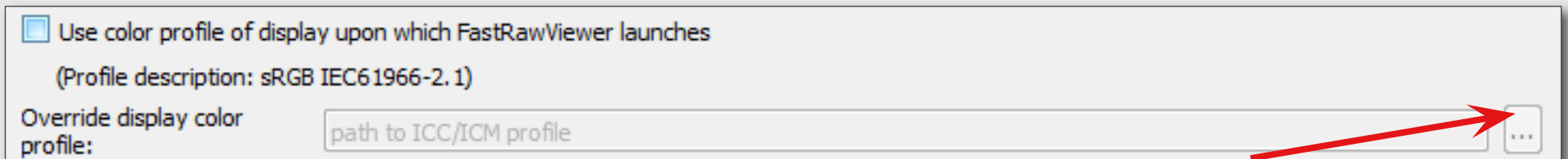
Enable Color Management

- **Menu -> File -> Preferences -> Color Management -> check the box "Enable Color Management"**



Choose correct Montor Profile

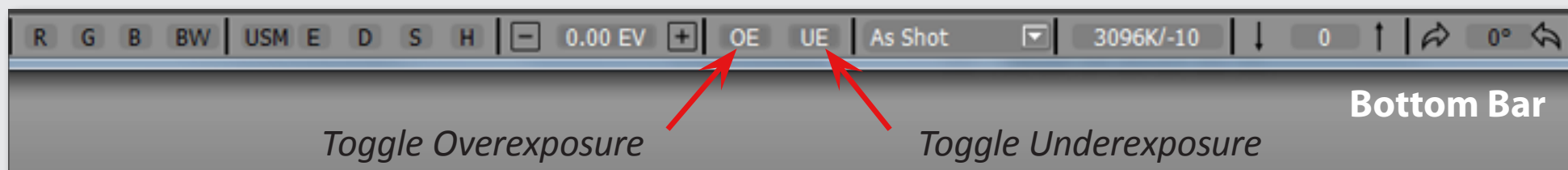
If colors still look off, please check at the same **Color Management** menu that you've chosen the correct Monitor Profile



Checking for Over- and Underexposure

Toggling Over- and Underexposure Indication

- O **Menu -> View -> Overexposure Display**
- U **Menu -> View -> Underexposure Display**



Over- and Underexposure Statistics

At the Information Windows Dock you can find **Over- and Underexposure Statistics Window** (see the picture to the right).

The Exposure Stats window displays the following data:

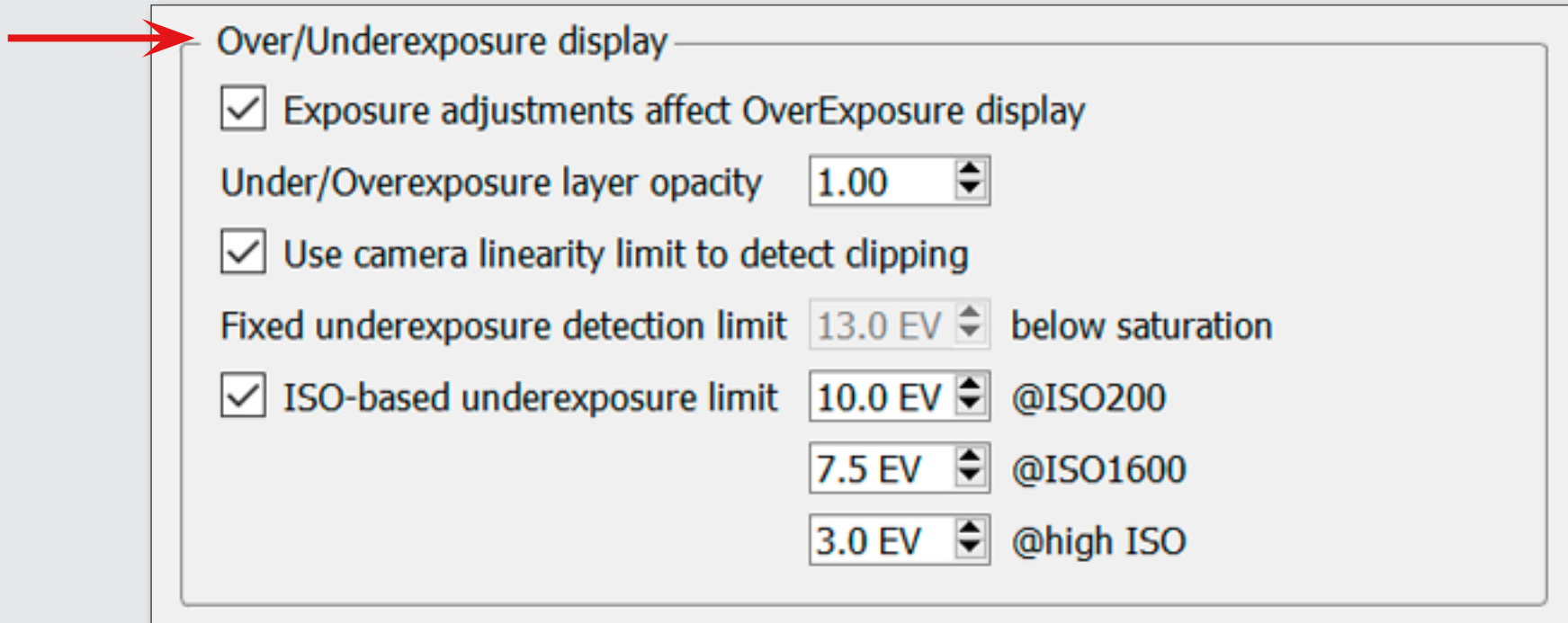
	UnExp		OveExp		OE+Corr	
R	0	0%	18	0%	143	0%
G	0	0%	26	0%	17k	0.4%
B	0	0%	30	0%	29k	0.7%

To display **Overexposure Statistics** before and after applying exposure compensation, choose **Always display OE + Corr column** in Exposure Stat panel settings (gear icon).

Over- and Underexposure Display Settings

To choose proper settings for Over- and Underexposure overlays use:

- **Menu -> File -> Preferences -> Exposure -> Over/Underexposure Display**



Over/Underexposure display

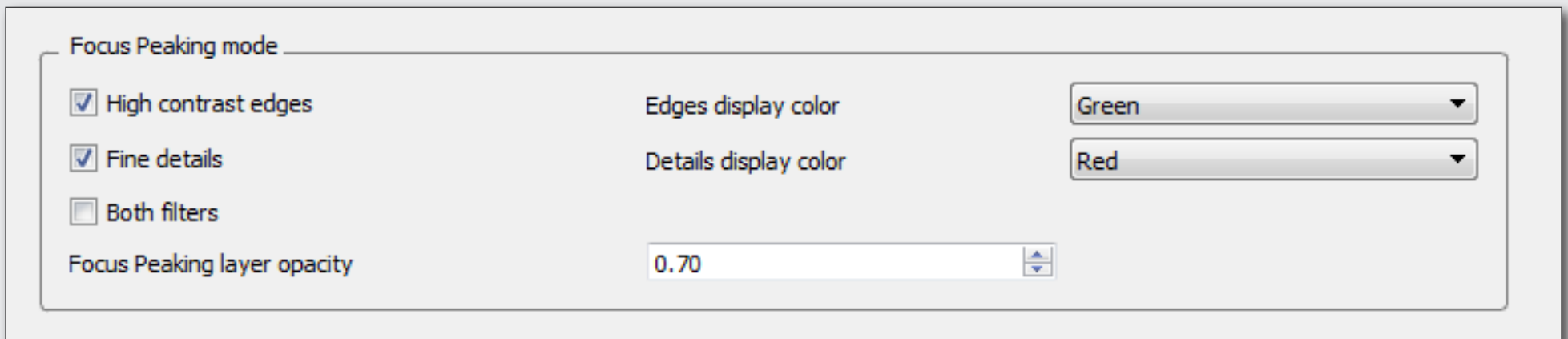
- Exposure adjustments affect OverExposure display
- Under/Overexposure layer opacity
- Use camera linearity limit to detect clipping
- Fixed underexposure detection limit below saturation
- ISO-based underexposure limit @ISO200
 - @ISO1600
 - @high ISO

Focus Peaking

The Focus Peaking filter allows to assess the sharpness of the image and locate the areas where the **sharp edges (E)** and/or **fine details (D)** exist.

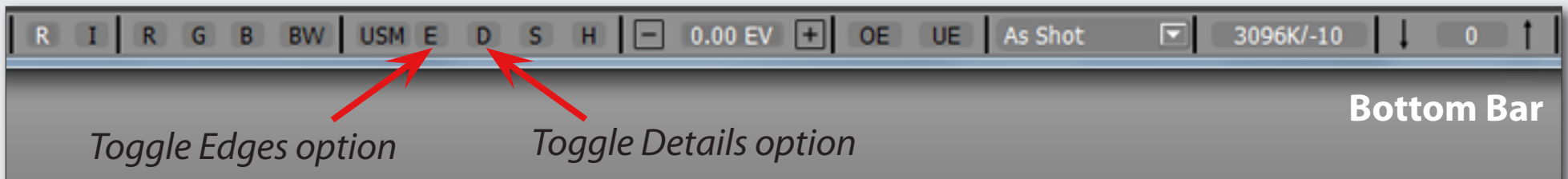
To Control Focus Peaking Options

- **Menu -> File -> Preferences -> GPU Processing -> Focus Peaking Mode**



Circle Focus Peaking (Edges/Details/Both/Off)

- Press **P** *or* **Menu -> View -> Toggle Focus Peaking** *or*



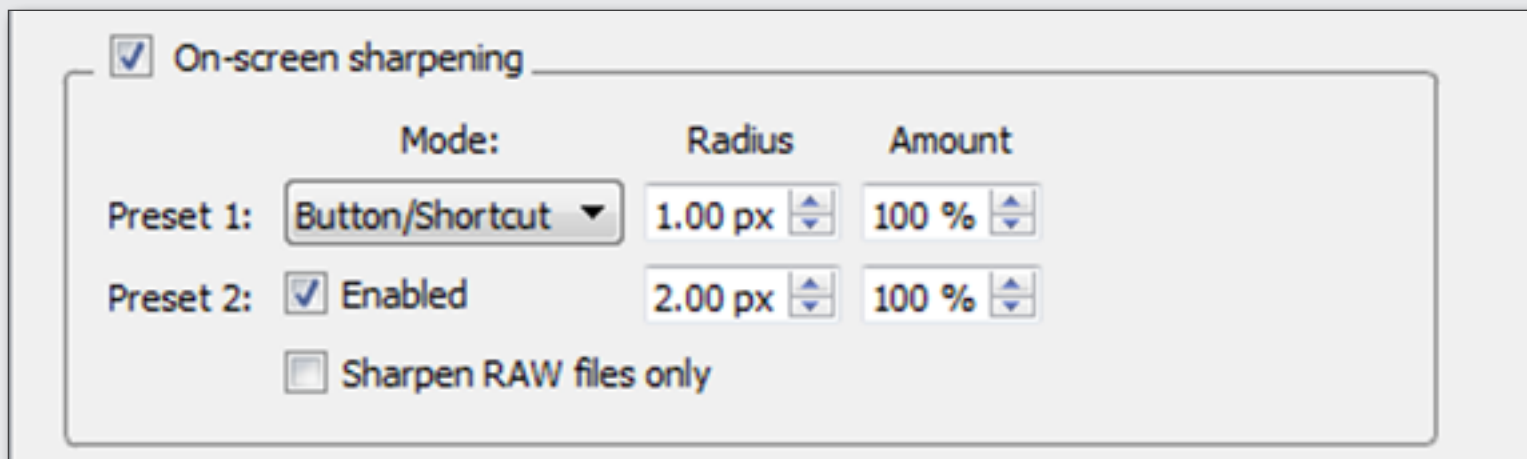
While being processed in a RAW converter, RAW images generally have had some sort of sharpening algorithm applied to them. In FastRawViewer, the sharpening is applied only for display.

Screen Sharpening

Setting the Level of Sharpening

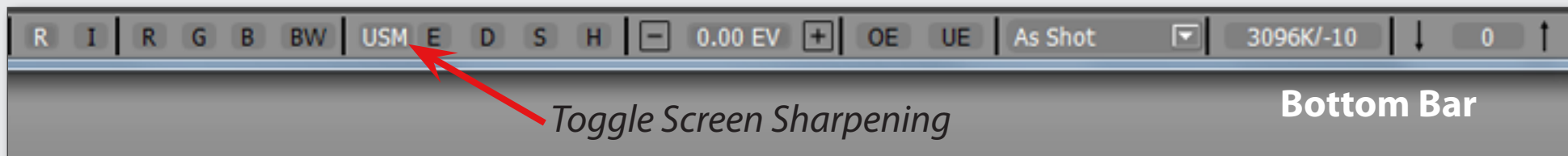
You can switch between two levels of sharpening:

- **Menu -> File -> Preferences -> Image Display -> Screen Sharpening**



Toggle Screen Sharpening

- Press  S or **Menu -> File -> Screen Sharpening** or



For ETTR practitioners or those who need to explore the shadows of an image, we have a tool ready for you - Shadow Boost; it lifts the shadows without clipping the highlights.

All you need to do is set the Shadow Boost amount, and apply it using Shift+S. This will allow you to see the level of noise in the shadows and to check if they are preserving details and colors well.

Boosting Shadows

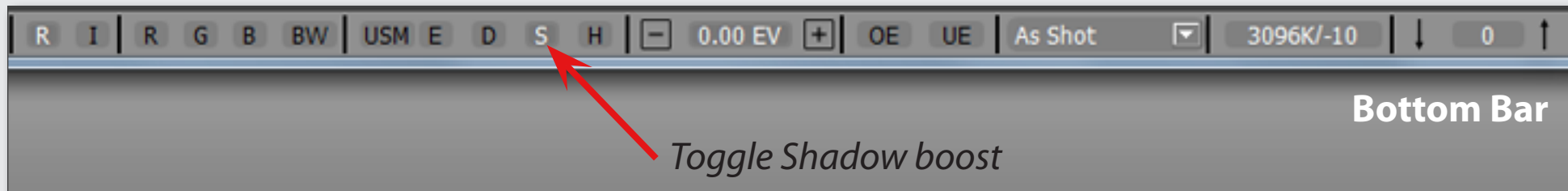
To Set the Amount of Shadow Boost

- **Menu -> File -> Preferences -> Image Display -> Boost Shadows amount**

Boost shadows amount

Toggle Shadow Boost on/off

- Press **Shift+S** *or* **Menu -> View -> Shadow Boost** *or*

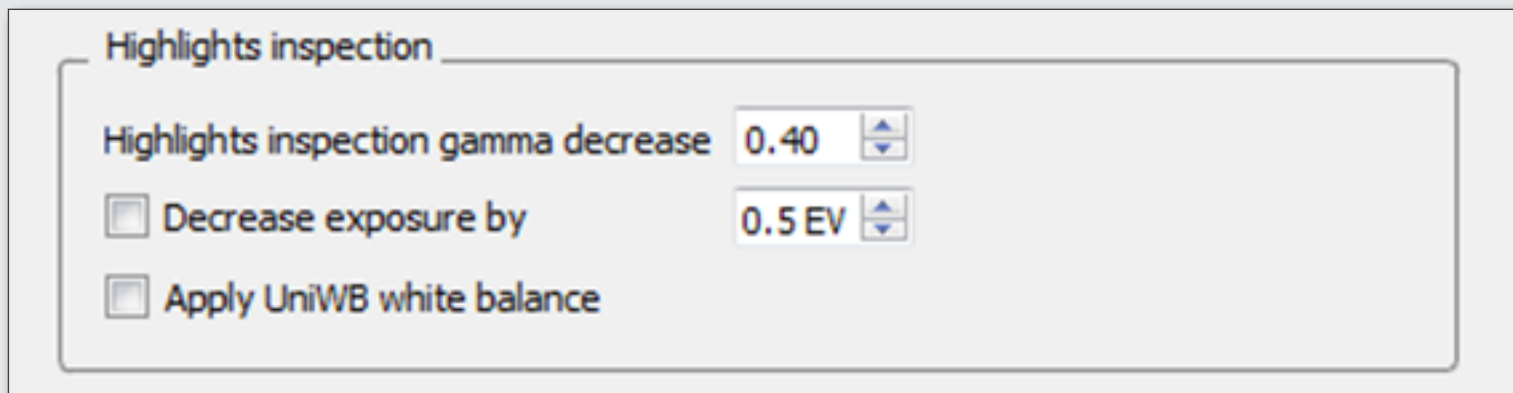


Highlight Inspection mode does the “opposite” of the **Shadow Boost** mode: the brightness of the shadows and midtones is decreased, thus the image looks darker; the contrast in the highlights is increased; white balance can be “canceled” by setting it to UniWB. As result it allows to evaluate details in highlights and inspect which channels are clipped (if any) and where.

Highlights Inspection

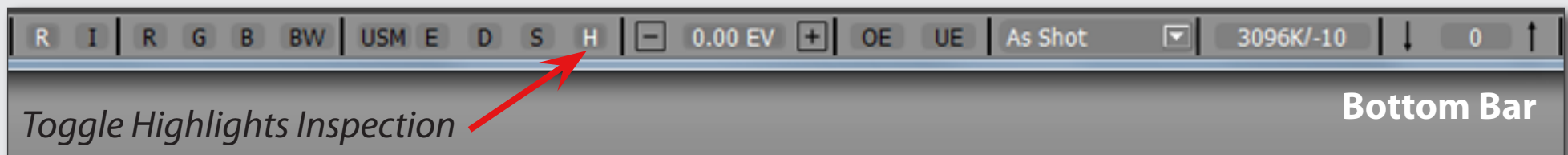
Choose Settings for Highlights Inspection

- **Menu -> File -> Preferences -> Image Display -> Highlights Inspection**



Toggle Highlights Inspection on/off

- Press  H *or* **Menu -> View -> Highlights inspection** *or*



You can save a lot of time spent on adjusting images in Lr/ACR, Capture One, or RPP, if you select and apply adjustments to **Exposure, White Balance, and Orientation** right in **FastRawViewer**, while browsing and save the applied settings in sidcar XMP and/or RPPS files. Raw converter program will be picking up those sidcar files prepared in **FastRawViewer** as the starting point for conversions.

This technique works well in combination with **Propagation** (see the tip "Time-saver: Propagation")

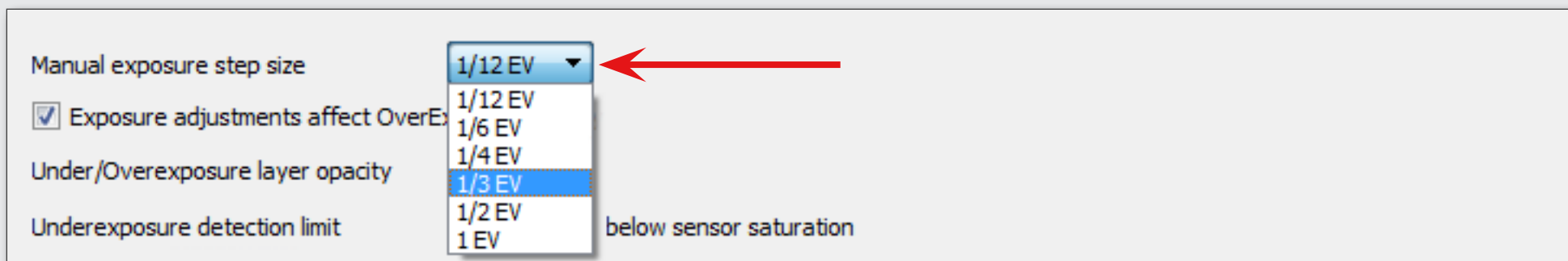
Controlling Exposure Correction (#1)

Switch Auto Exposure Correction "on"

- Press **Shift+A** or **Menu -> Adjust -> Auto Exposure Correction**

Choosing the Step Size for Exposure Correction

- **Menu -> File -> Preferences -> Image Display -> Manual exposure step size drop down**



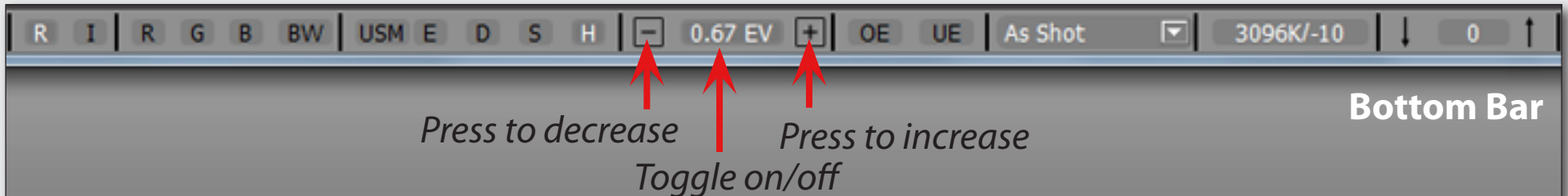
Controlling Exposure Correction (#2)

Switch Auto Exposure Correction on/off

- Press **A** *or* **Menu -> Adjust -> Exposure Correction** *or*
Press the field **Exposure Correction Value** at the **Status Bar**

Increase/Decrease Exposure Correction

- Press **Alt+”+”** / **Alt+”-”** *or*
Click **+** / **-** at the lower **Bottom Bar**



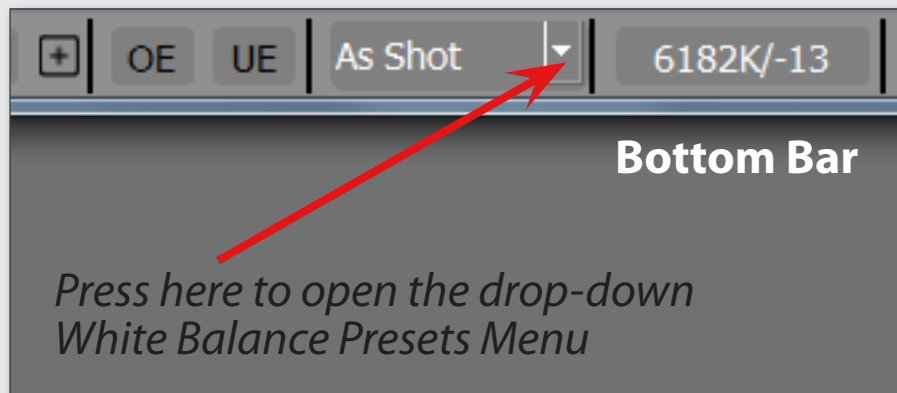
Quick Way: White Balance Presets

Cycle between Auto/As Shot/Daylight/Custom White Balance Presets

- Press **W** *or* **Menu -> Adjust -> Toggle White Balance**

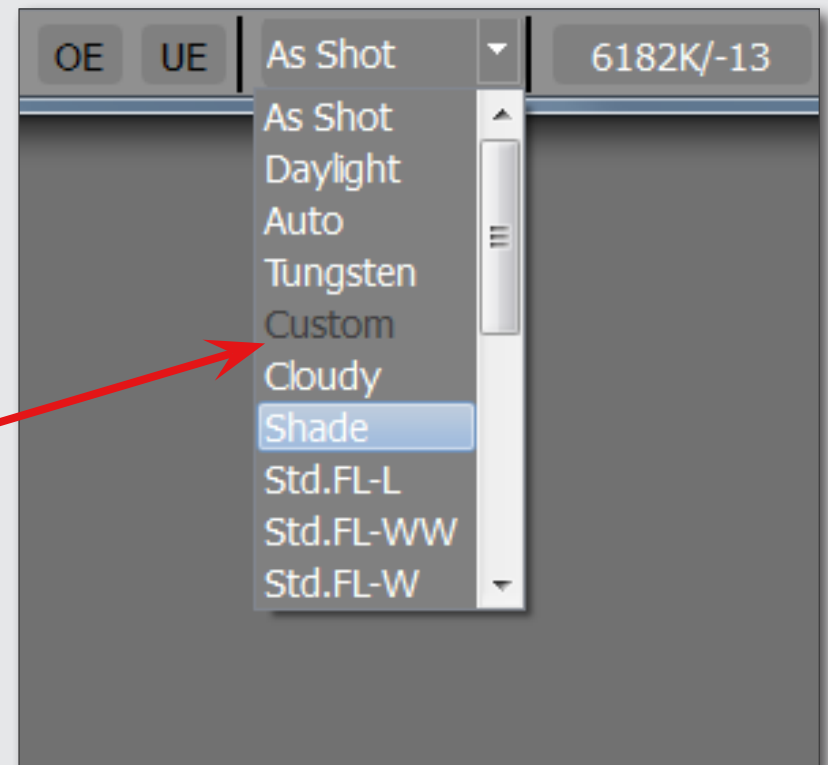
More White Balance Presets

1. At the Bottom Bar:



2. choose one of the White Balance presets
(see the image to the right).

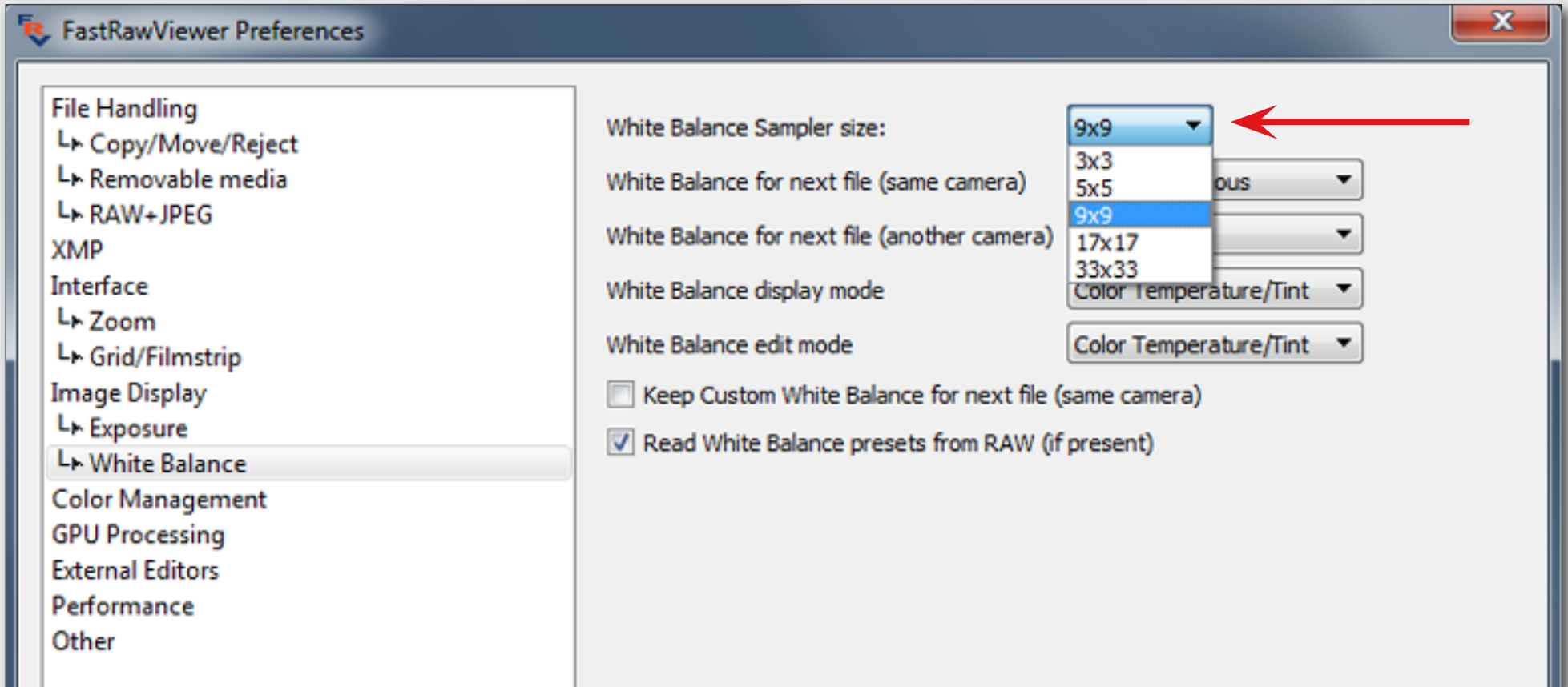
Note: UniWB preset switches white balance *off* completely.



Sampling Grey Point

Choosing the Sampler Size

- Menu -> File -> Preferences -> White Balance -> White Balance Sampler Size *drop down*

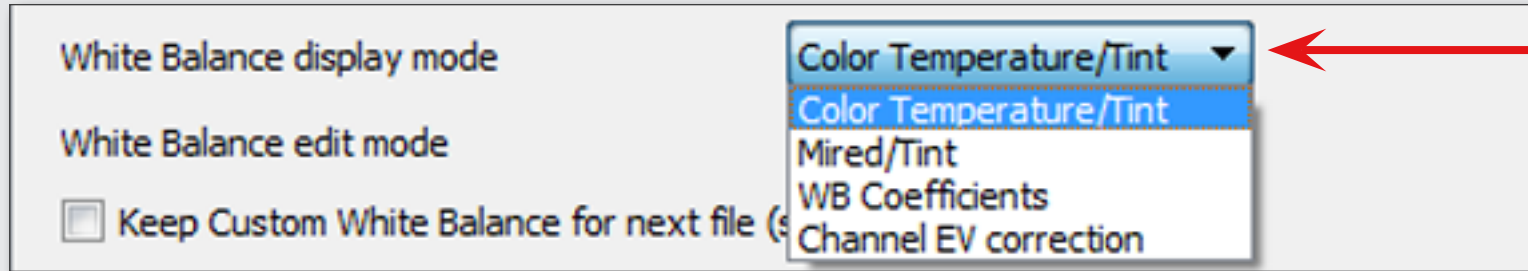


Setting the Grey Point

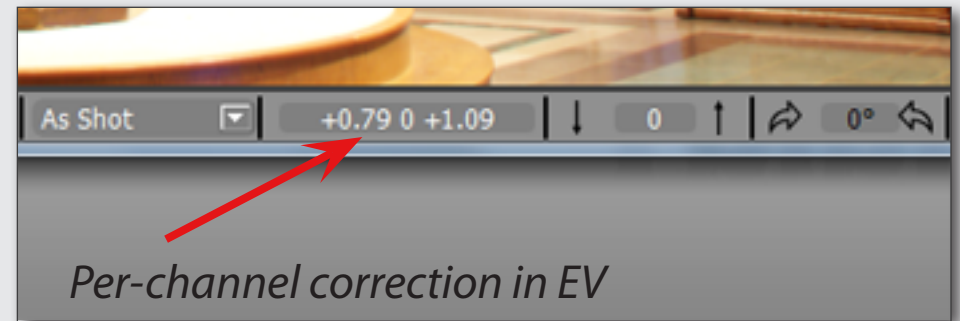
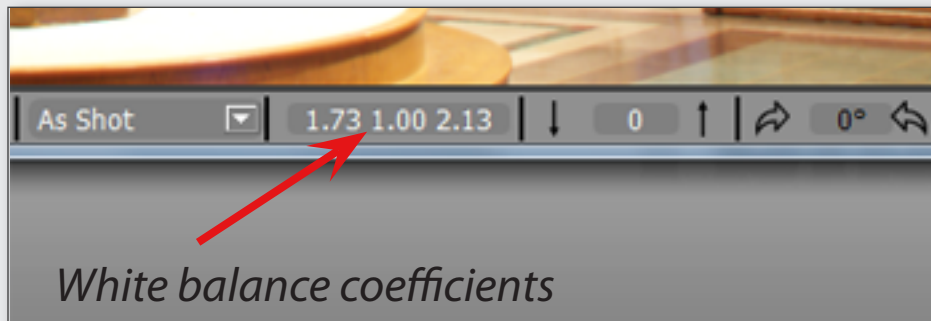
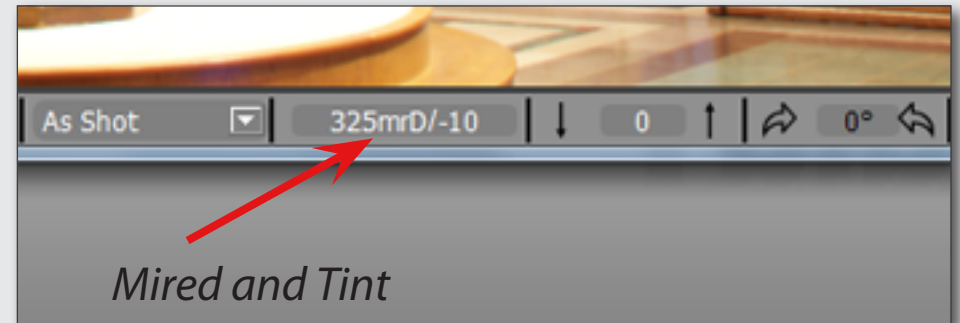
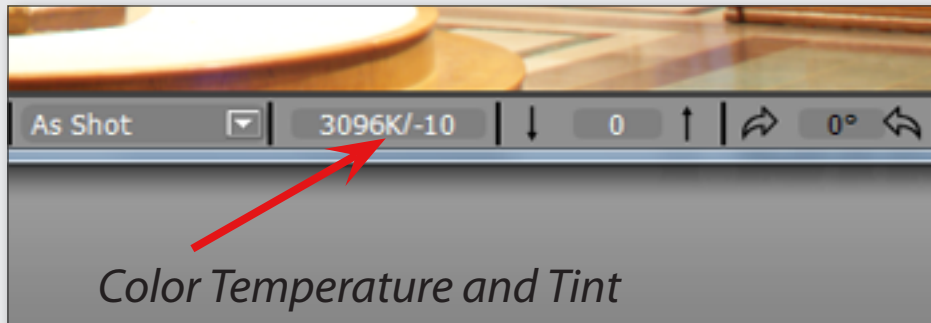
- Click on **Alt+ LeftClick** on the image on something you designate as neutral.

Choosing White Balance Display Mode

- Menu -> File -> Preferences -> White Balance -> White Balance Display Mode



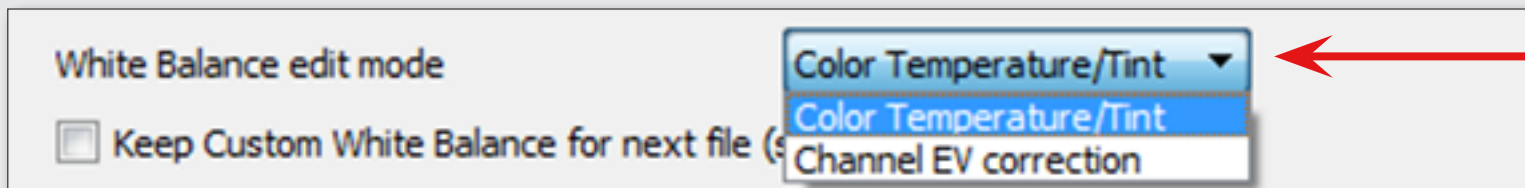
White Balance settings in the chosen mode will be displayed at the **Bottom Bar**:



Fine-tuning White Balance

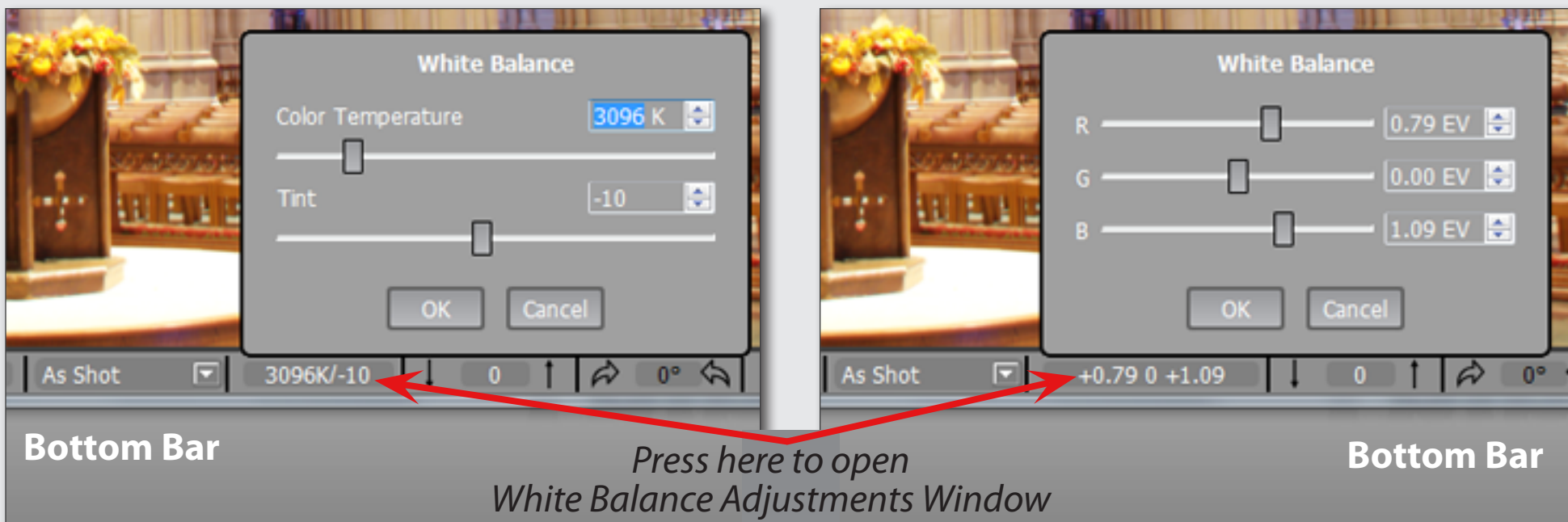
Choose White balance Edit Mode

- Menu -> File -> Preferences -> White Balance -> White Balance Edit Mode



Adjust White Balance

- Click **White Balance Display** at the Bottom Bar to adjust white balance using sliders in the **White Balance Adjustment Window**

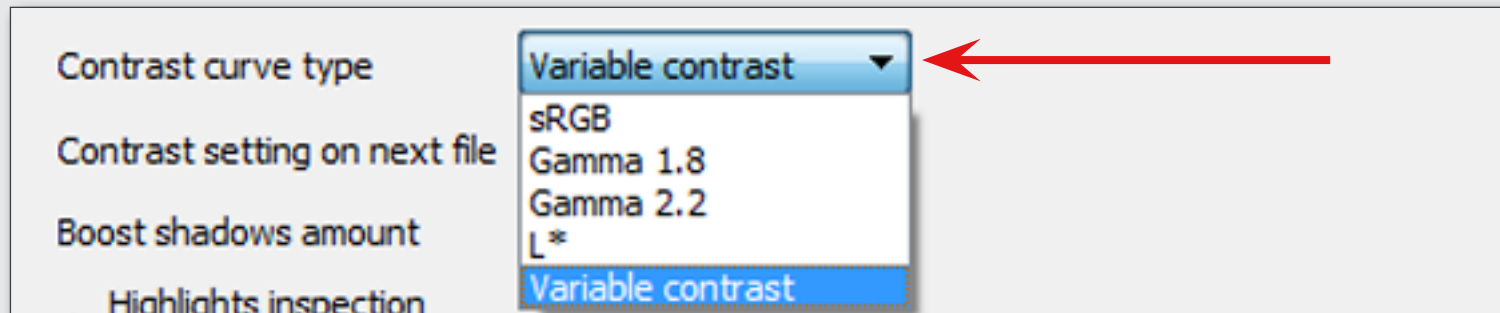


If you want to add “bite” to the image display, or are opting for a flatter look for the scenes with high dynamic range (*which helps see maximum details*), you need to play with the contrast.

FastRawViewer allows one to apply “standard” tone curves (sRGB, Gamma 1.8 and 2.2, L*), but also offers the **Variable Contrast** mode for tone curves.

Choosing a Contrast (Tone) Curve Type

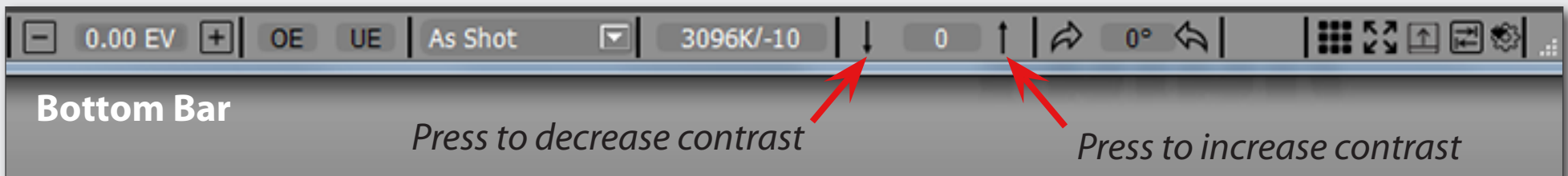
- **Menu -> File -> Preferences -> Image Display -> Contrast Curve Type**



Adjusting Contrast

In Variable Contrast mode, the image contrast can be adjusted in “grades”:

- **Menu -> Adjust -> Increase Contrast (or **K**) / Decrease Contrast (or **⇧K**) or**

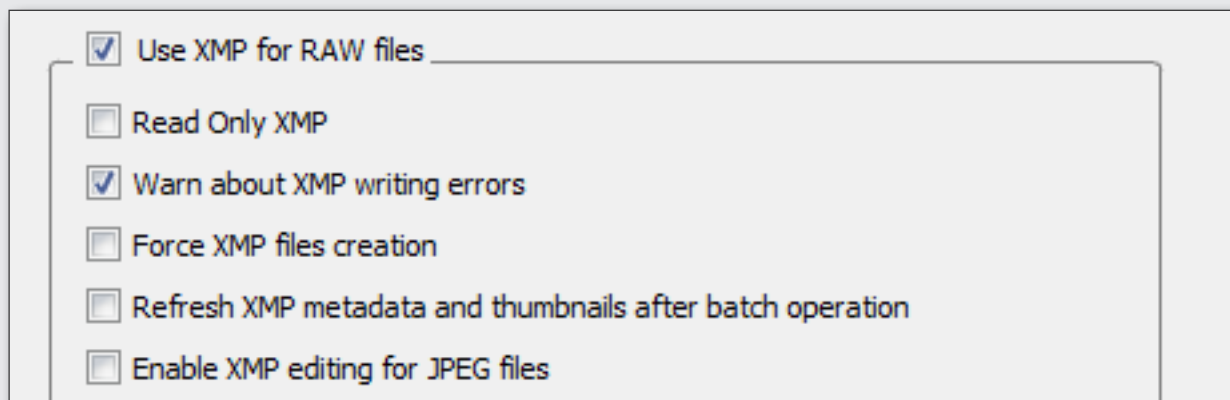


Customizing XMP or RPPS Settings to Match Your RAW Converter

Many RAW converters and image browsers are using sidecar files to store non-destructive changes to the image as well as ratings, labels, comments, etc.

Choosing XMP Settings in Preferences

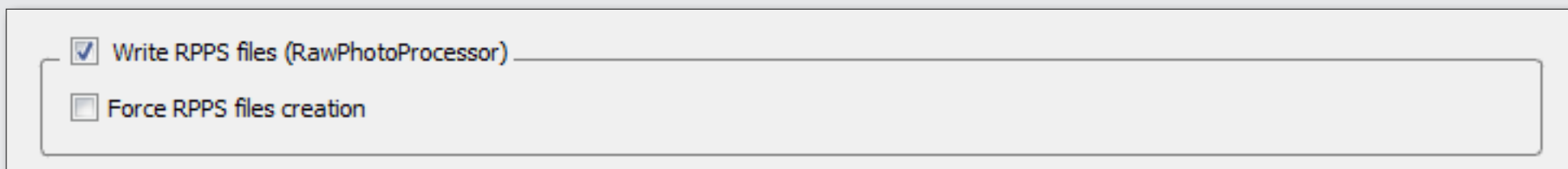
- **Menu -> File -> Preferences -> XMP**



In XMP settings Window you will see several options tuning of which allows better communication between FastRawViewer and your preferred RAW converter.

For RPP Users

- **Menu -> File -> Preferences -> Other**



Adjusting Settings and Basic Conversion Parameters

If you are using Adobe ACR or Lr you should:

0a. Switch on "Apply Adobe Exposure Correction"

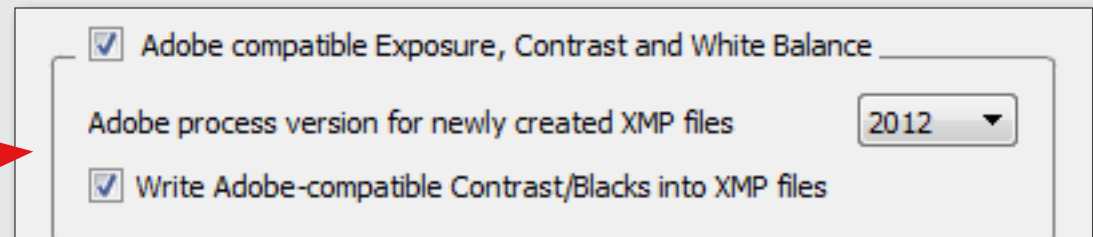
- Menu -> File -> Preferences -> Exposure

Apply Adobe hidden exposure correction

0b. Switch on "Adobe compatible Exposure, Contrast and White balance"

- Menu -> File -> Preferences -> XMP

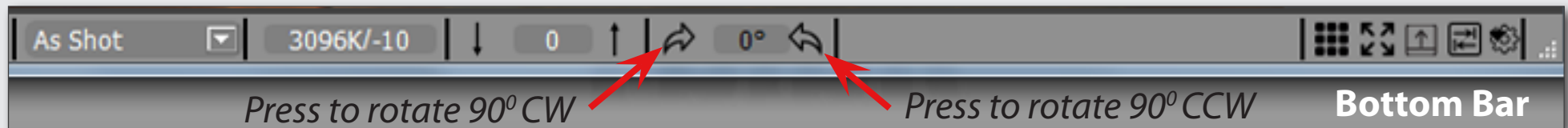
To record Contrast in the format that is acknowledged by Adobe converters, check "*Write Adobe-compatible Contrast/Blacks into XMP file*"



1. Check the Settings for Sidecar Files .xmp/.rpps (please see the previous tip)

2. Set Image Orientation (if needed)

- Menu -> Adjust -> Rotate 90° CCW (or ⌘7) / Rotate 90° CW (or ⌘9) or



3. Tune White Balance and Adjust Exposure Correction (see tips for 'Assessing the Image: White Balance' and 'Assessing the Image: Exposure Correction')

5. Adjust Contrast (if using Adobe raw converters) (see tips for 'Assessing the Image: Contrast')

It often happens that several files need the same adjustments to **White Balance**, **Exposure** and **Orientation**. To do so, FastRawViewer offers **Propagation Mode**: in this mode adjustments made to Exposure and White Balance are **automatically applied** to the next image you open in FastRawViewer.

Propagation of Settings from the "Previous" Image to the "Next" (#1)

Keep Exposure Correction for the Next Frame

- **Menu -> File -> Preferences -> Exposure** -> *choose* **Keep from prev. file** from drop-down **Exposure correction on file open**



Keep White Balance for the Next Frame

- **Menu -> File -> Preferences -> White Balance** -> *choose* **Same as previous** from drop-down **White Balance for next file**





When using Propagation you may choose **Forced Mode** of recording sidecar files. In this case even if no individual adjustments were applied to the image the sidecar file will be written containing all the changes you've made last time within the session. Thus all RAW files will have accompanying sidecar files with the parameter already set to be picked up by RAW converter.

Propagation of Settings from the "Previous" Image to the "Next" (#2)

Force XMP Files Creation

- **Menu -> File -> Preferences -> XMP**

- Read Only XMP
- Force XMP files creation

Force RPPS Files Creation

If you are using RPP (*RawPhotoProcessor*) switch on the following:

- **Menu -> File -> Preferences -> Other**

- Write RPPS files (RawPhotoProcessor)
- Force RPPS files creation