

Fast **RAW** *Viewer* **2.0**

Tips for a Quick Start (version for Windows)





Index

Getting familiar with the FRV Tools and Features

How to Customize FastRawViewer	4
Preferences #1	5
Preferences #2	6
Examining Shortcuts #1	7
Examining Shortcuts #2	8
Adjusting Shortcuts #3.....	9
Interface Customization #1	10
Interface Customization #2	11
Interface Customization #3	12
Interface Customization #4	13
Interface Customization #5.....	14
Bottom Bar Structure	15
Bottom Bar Customization.....	16
Color Management	17
EXIF View	18
Working with Removable Media	19



Working with Folder Tree	20
Favorite Folders	21
Special Folder Browsing Modes	22
Subfolder Browse Mode	23
Grid View/Single File View Modes #1	24
Grid View/Single File View Modes #2	25
Multi-window Mode.....	26
Multi-window Mode Customization	27
Rating and Labels	28
File Sort & Filter #1	29
File Sort & Filter #2	30
File Selection	31
Operations with Multiple Files.....	32
Renaming Files	33

Assessing the Image

Tools and Features	34
Matching Image Display #1	35
Matching Image Display #2	36



Over- and Underexposure #1	37
Over- and Underexposure #2.....	38
In-Focus Areas	39
Sharpness	40
Shadows	41
Highlights.....	42
Exposure Correction #1	43
Exposure Correction #2.....	44
White Balance Presets.....	45
Custom White Balance	46
White Balance Display	47
Tuning White Balance	48
Contrast	49

Time-saver

Getting Ready for RAW Conversion #1	50
Getting Ready for RAW Conversion #2	51
Propagation	52
Propagation to Sidecar Files	53



How to Customize FastRawViewer

Preferences

- **Menu -> File -> Customize -> Preferences**

Keyboard Shortcut Editor

- **Menu -> File -> Customize -> Keyboard Shortcuts**

A Gear Icon at the Top of Panels or Bars



User Manual

- *comes with the installation of FastRawViewer*
- **Menu -> Help -> Online manual**
- **<http://www.fastrawviewer.com/usermanual>** (*can be downloaded in .pdf format as well*)

Quick Start Tips

- **Menu -> Help -> Usage tips**
- **<http://www.fastrawviewer.com/tips-and-videos>** (*to download in .pdf format*)

Customer Support

- **support@fastrawviewer.com**

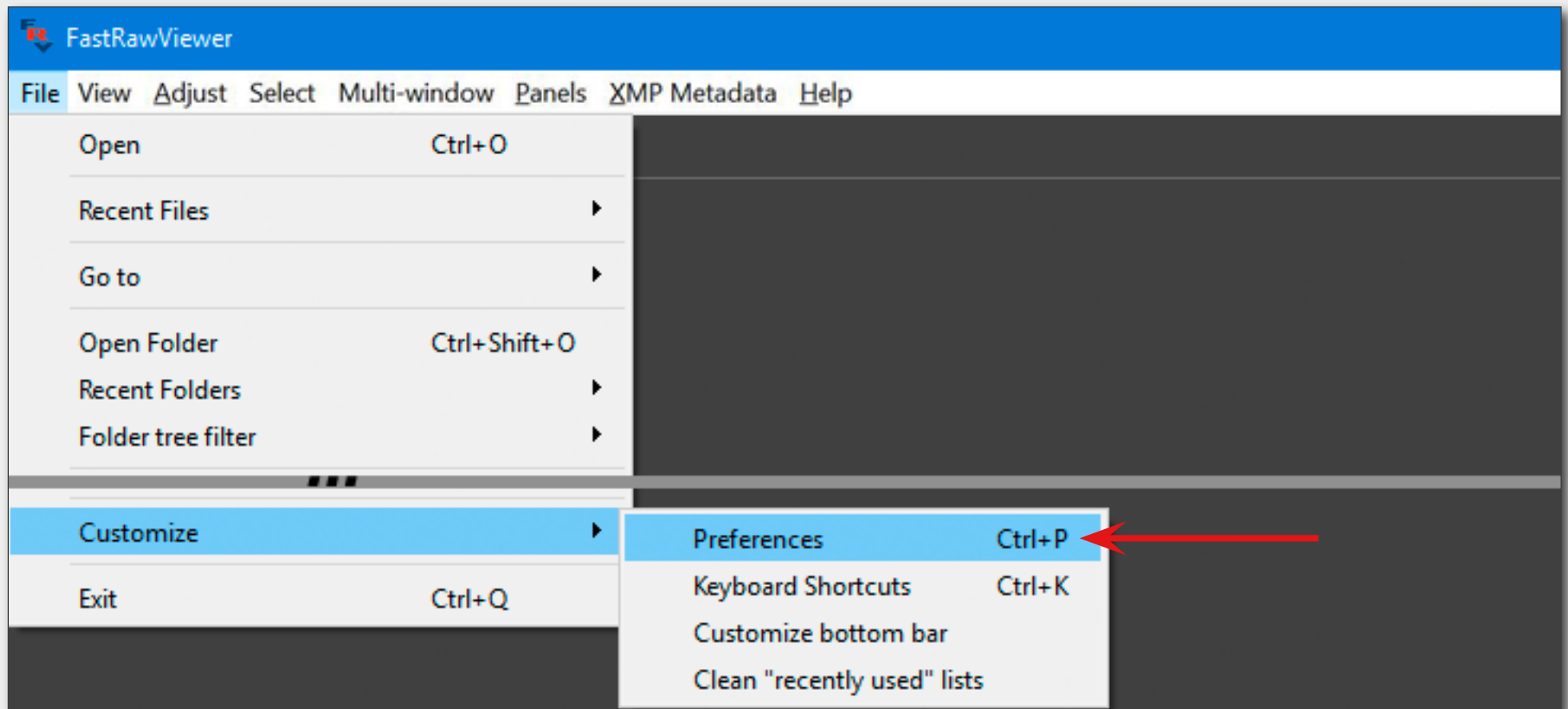


Tuning Preferences (#1)

Preferences allow to set useful features, including tailoring to your needs the modes that facilitate file browsing, image inspection, further raw processing, image presentation, etc. For example, to enable certain *Focus Peaking* modes, look into Preferences.

Spending some time on Preferences will help you understand FastRawViewer better and use it more efficiently:

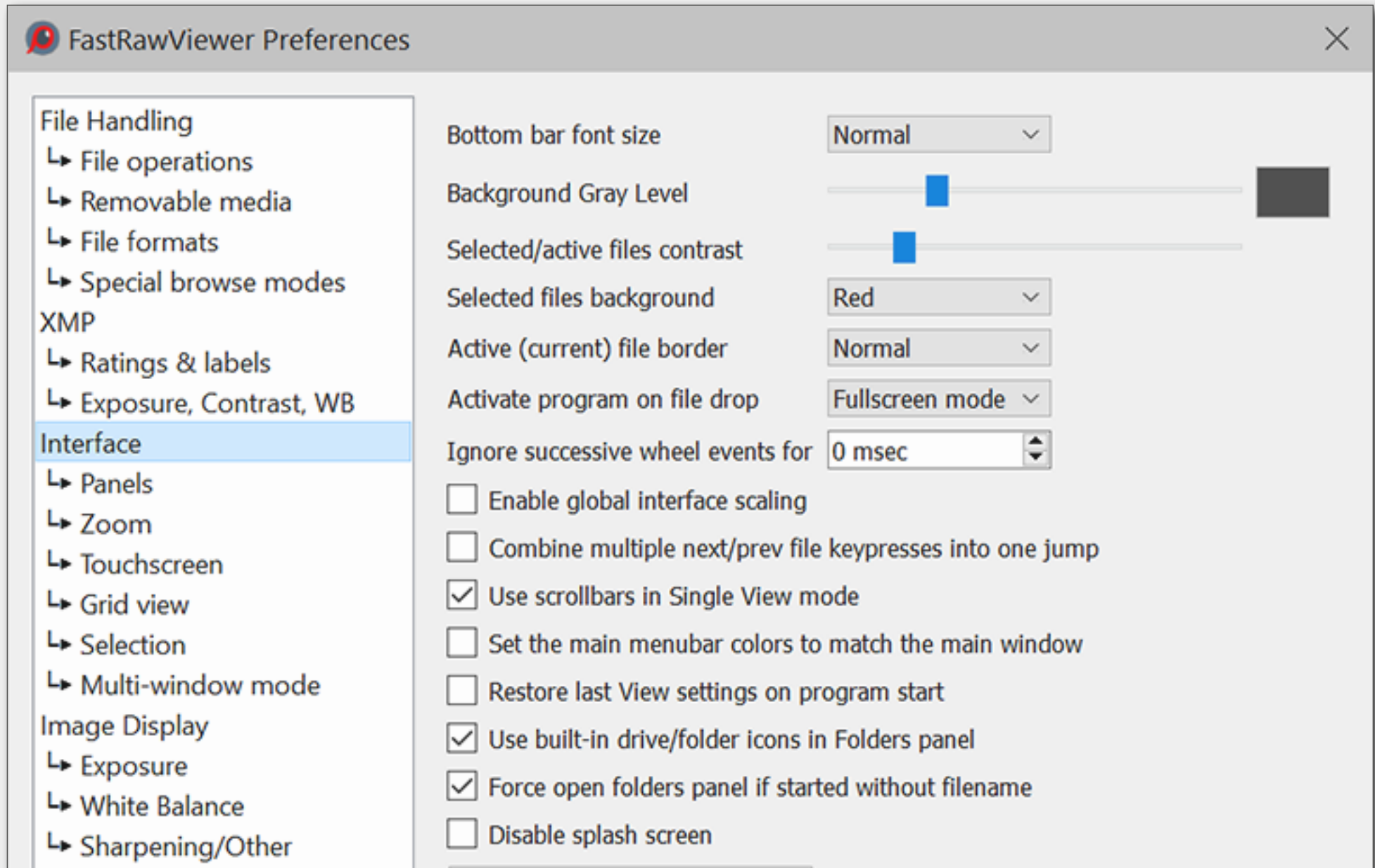
- Press **Ctrl+P** or **Menu -> File -> Customize -> Preferences**





Tuning Preferences (#2)

If you feel that some feature is missing or inconvenient, or you don't know how to set it, please check the Preferences menu and adjust as necessary, and if it is not there, please email us or visit our forum.



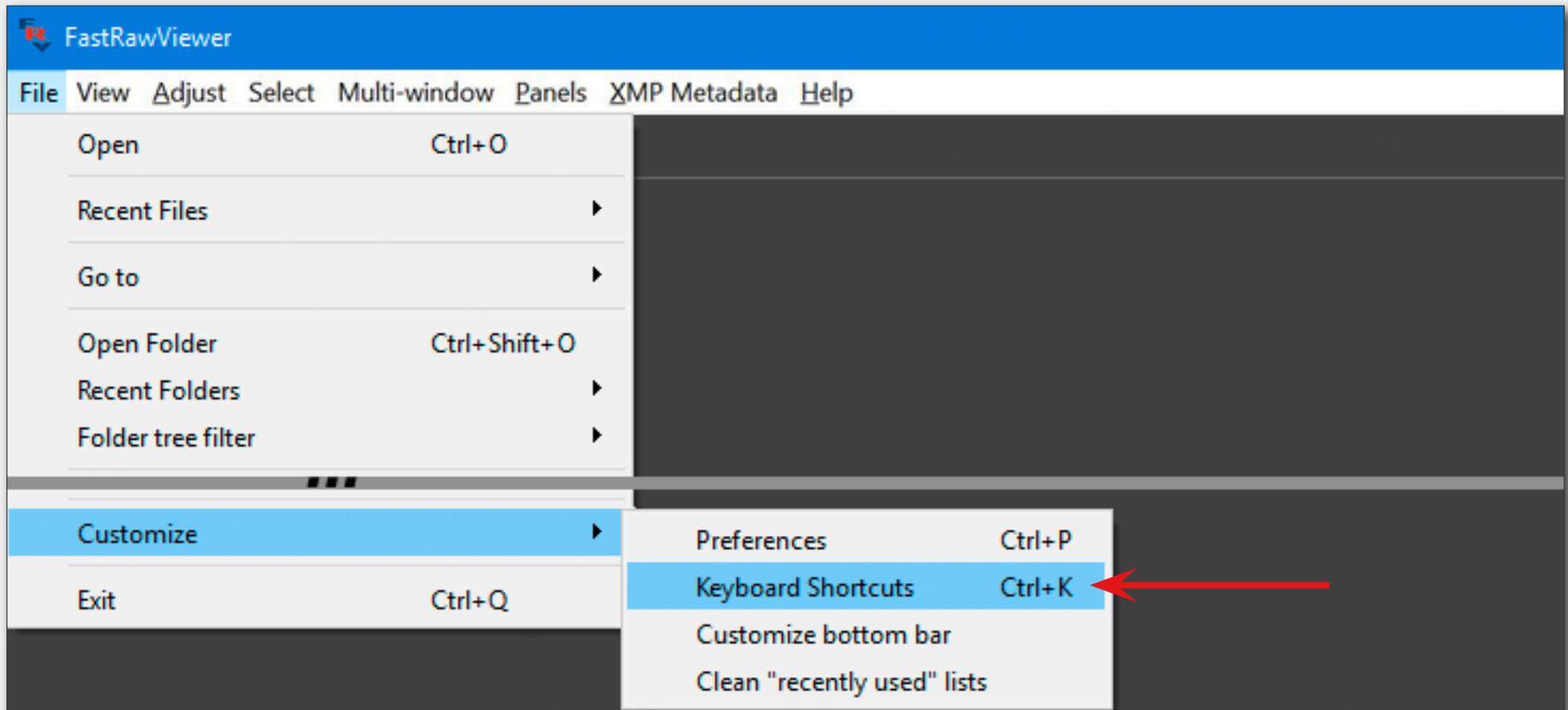


Examining Keyboard/Mouse Controls (#1)

FastRawViewer is designed to be controlled mostly with keyboard and mouse, without much reaching for menus.

You can examine the default/current key/mouse control combinations and change them to your preferred ones anytime:

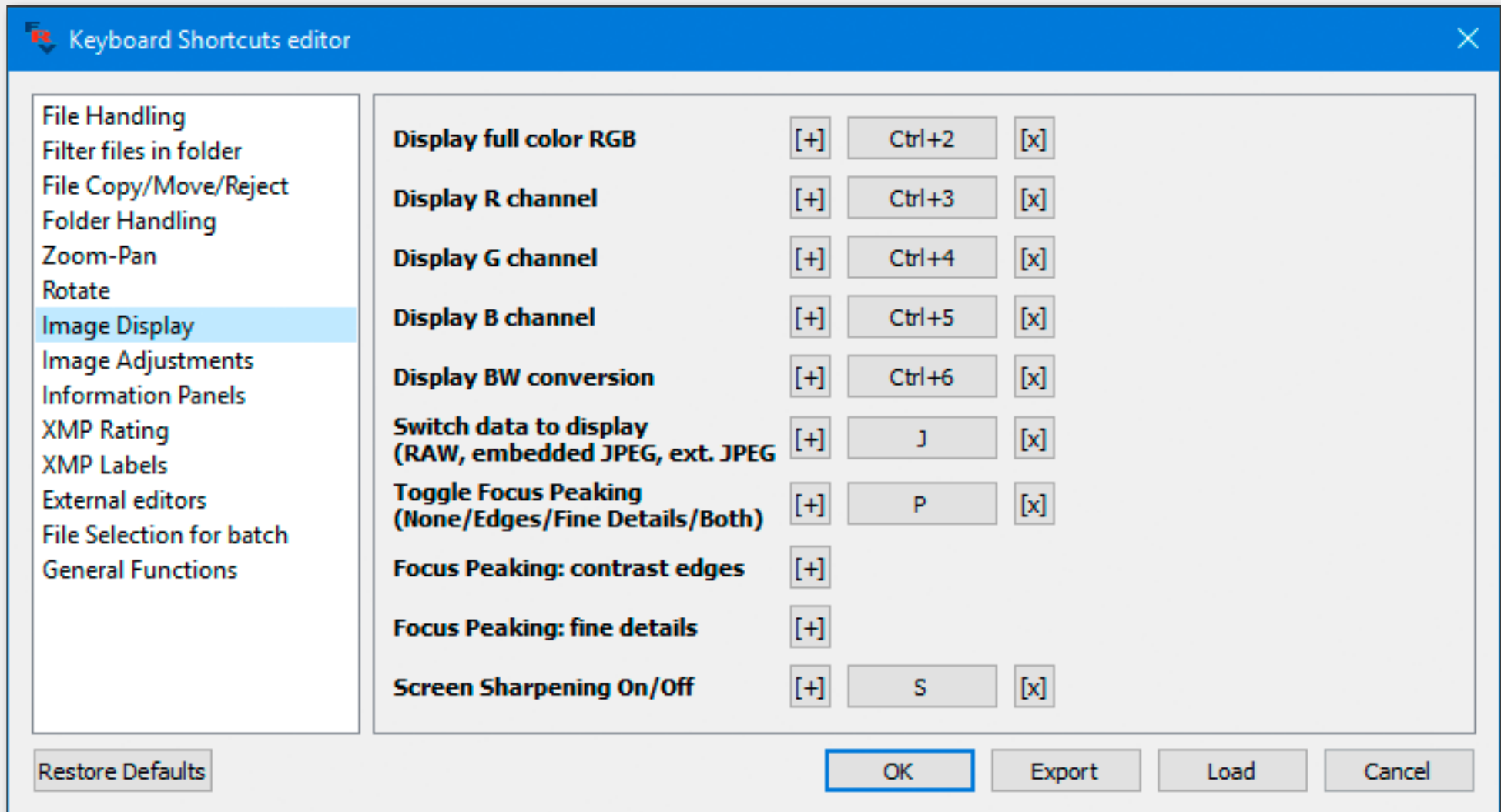
- Press **Ctrl+K** or **Menu -> File -> Customize -> Keyboard Shortcuts**





Examining Keyboard/Mouse Controls (#2)

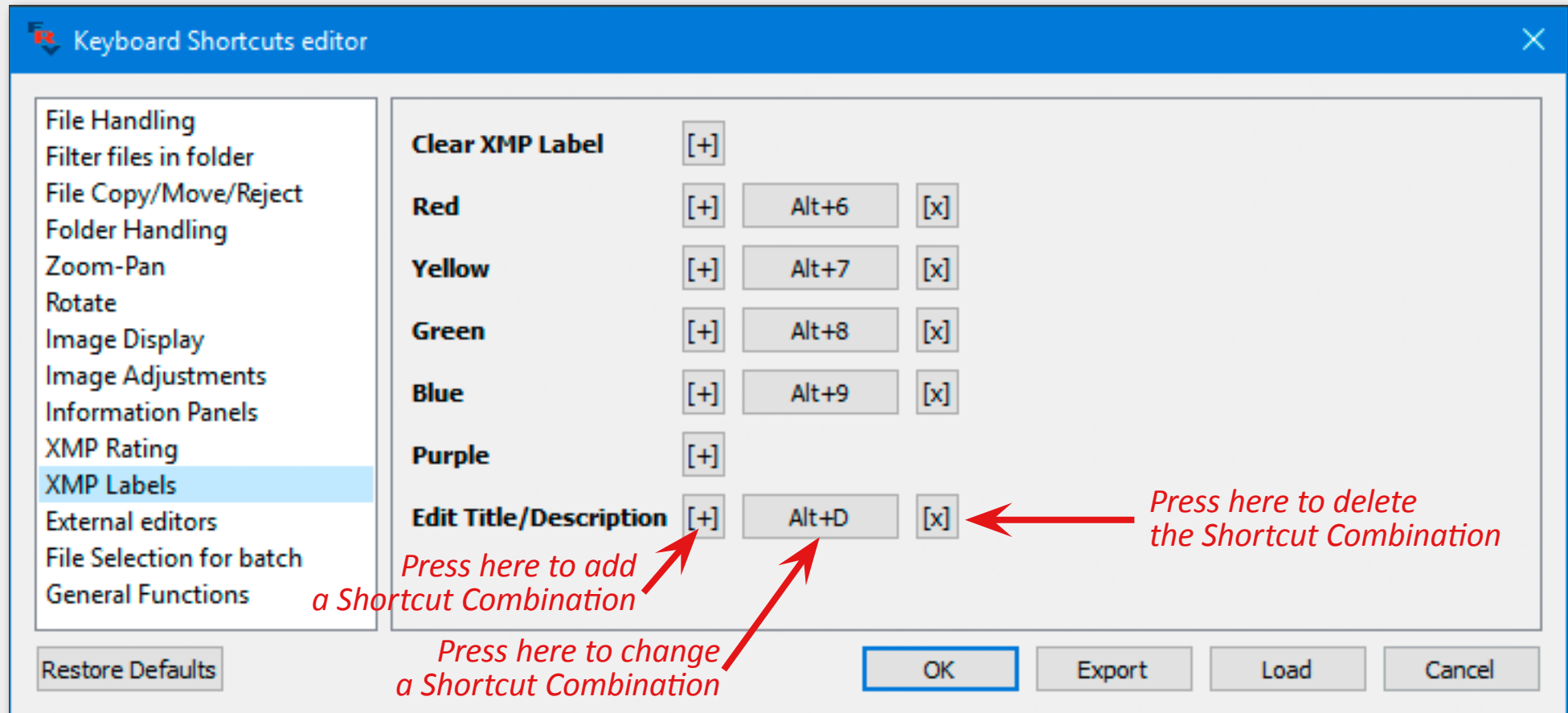
We suggest that you spend some time familiarizing yourself with the shortcuts with the help of the **Keyboard Shortcuts Menu**, **tips**, and **FastRawViewer Manual**; it is not just an overview of the program (*that is, showing what can be done in FastRawViewer*), but will also help you to do more things in less time.





Changing Keyboard/Mouse Controls

Many features are already pre-programmed and assigned to shortcuts. Nevertheless you can change the shortcuts so that they will be similar to the ones you use with other graphic programs.



If you feel that some feature or shortcut is missing or inconvenient, please check the **Keyboard Shortcuts Editor** and adjust as necessary, and if it is not there, please let us know.



Background Color Schemes, Font Size, other General Interface Settings

Menu -> File -> Customize -> Preferences -> Interface

The background color scheme can be changed to any shade of grey, from black to white. Also, many other interface settings, including bottom bar settings, can be changed here.

<ul style="list-style-type: none">File Handling<ul style="list-style-type: none">File operationsRemovable mediaFile formatsSpecial browse modesXMP<ul style="list-style-type: none">Ratings & labelsExposure, Contrast, WBInterface<ul style="list-style-type: none">PanelsZoomTouchscreenGrid viewSelectionMulti-window modeImage Display<ul style="list-style-type: none">ExposureWhite BalanceSharpening/OtherColor Management	<ul style="list-style-type: none">Bottom bar font size: NormalBackground Gray Level: Selected/active files contrast: Selected files background: RedActive (current) file border: NormalActivate program on file drop: Fullscreen modeIgnore successive wheel events for: 0 msec<input type="checkbox"/> Enable global interface scaling<input type="checkbox"/> Combine multiple next/prev file keypresses into one jump<input checked="" type="checkbox"/> Use scrollbars in Single View mode<input type="checkbox"/> Set the main menubar colors to match the main window<input type="checkbox"/> Restore last View settings on program start<input checked="" type="checkbox"/> Use built-in drive/folder icons in Folders panel<input checked="" type="checkbox"/> Force open folders panel if started without filename<input type="checkbox"/> Disable splash screenEdit bottom bar items
---	---



Filmstrip Settings and Panels Color Schemes, Font Size, etc

- **Menu -> FastRawViewer -> Preferences -> Interface -> Panels**

Everything that has to do with panels in general as well as with the **Filmstrip** panel has be found in a separate group in this tab.

The screenshot shows the 'FastRawViewer' Preferences dialog, specifically the 'Interface' tab and 'Panels' section. The left sidebar lists various settings categories, with 'Panels' highlighted. The main area contains the following settings:

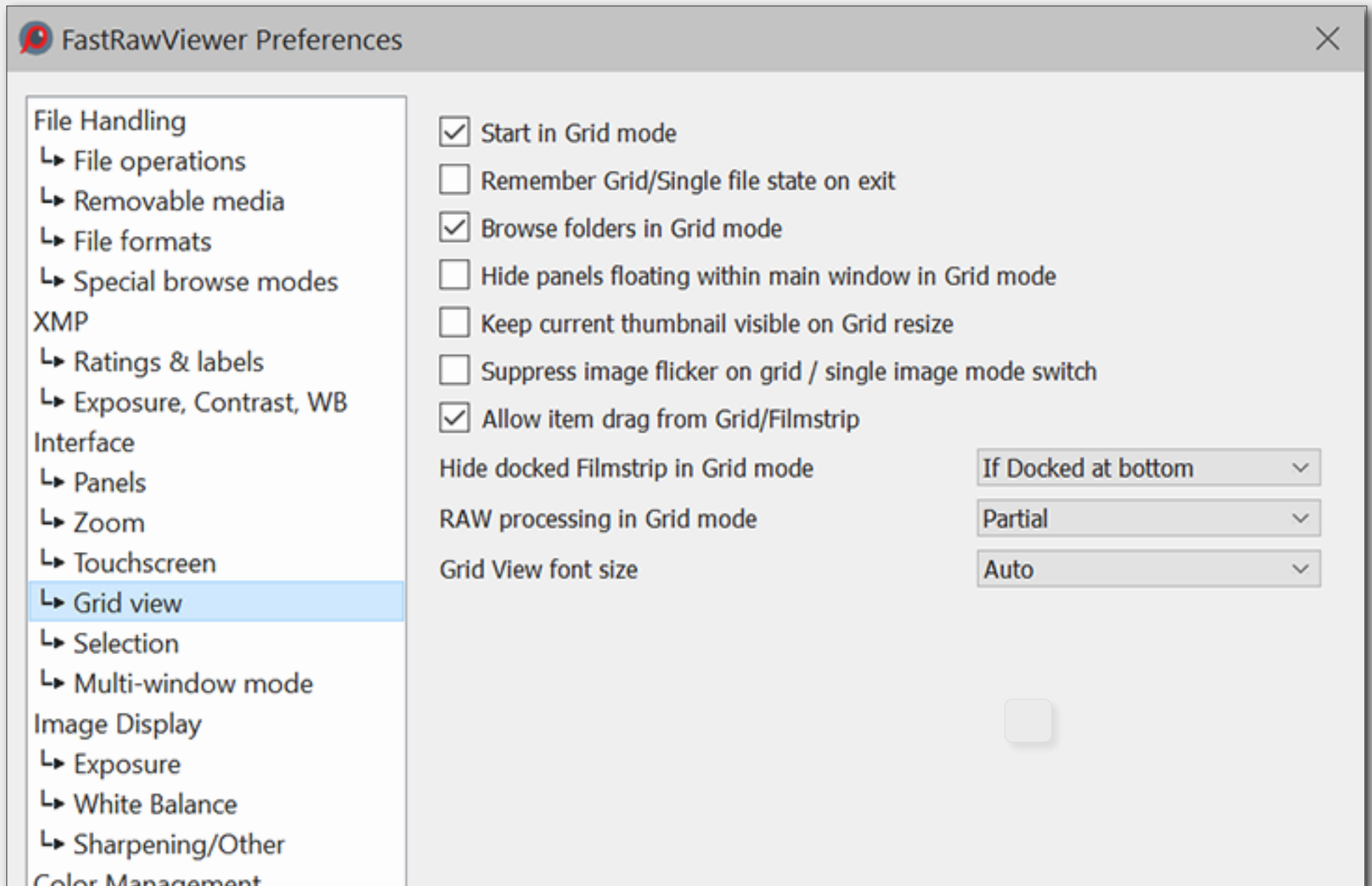
- Panels font size:** Normal (dropdown)
- Panels color scheme:** Medium Gray (dropdown)
- Hide panels on Tab:**
 - ☒ Hide Menu bar when hiding panels
 - ☐ Hide bottom window bar when hiding panels
 - ☒ Disable transparency for panels outside of main window
 - ☒ Dim Histogram/Stats/EXIF panels while changing files
 - ☐ Restore Panels -> Hide all state on program start
- Hide floating panels:** Those inside main window (dropdown)
- Filmstrip panel settings:**
 - Font size:** Auto (dropdown)
 - Center Filmstrip items:** Edge items only (dropdown)

A red arrow points from the 'Panels' section in the left sidebar to the 'Filmstrip panel settings' section in the main area.



Tuning Settings for Grid View

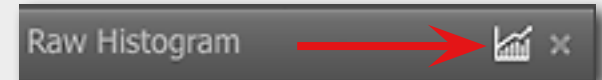
- **Menu -> File -> Customize -> Preferences -> Grid View**





Control Panel Display in Grid View Mode

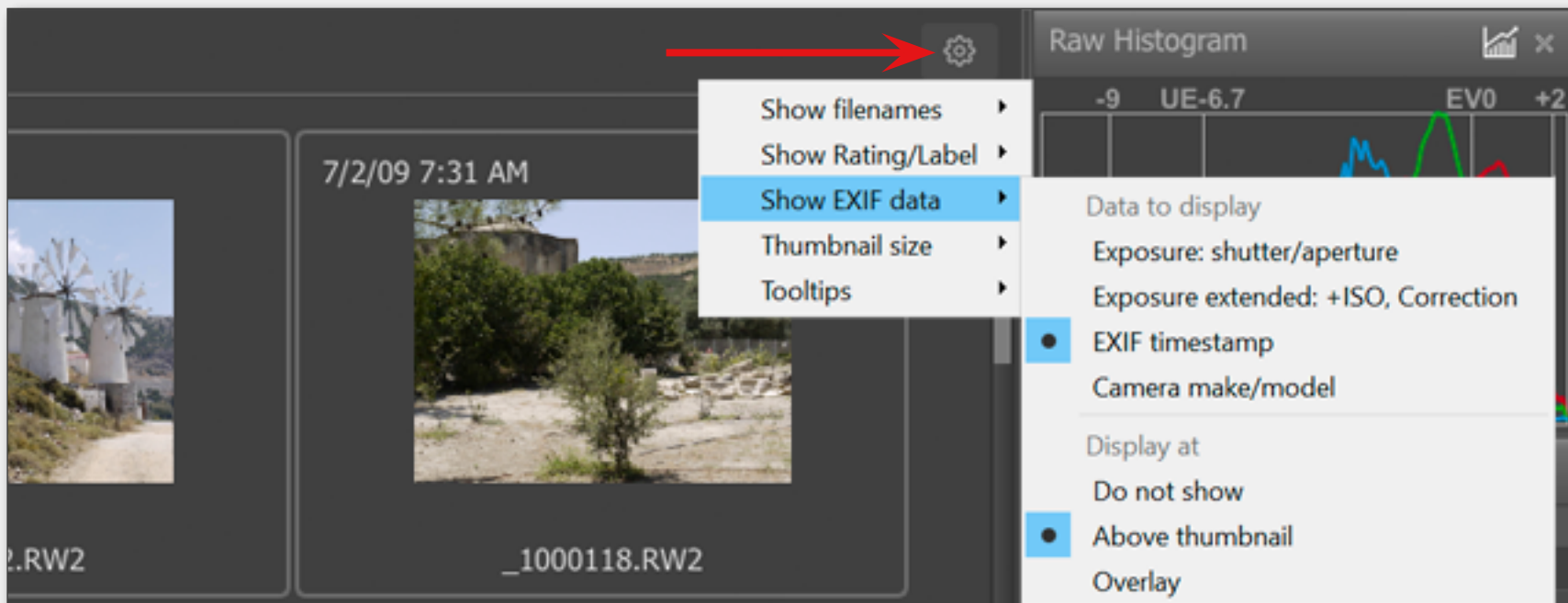
To switch display of the Histogram and the Exposure Statistics for the selected image in Grid mode “on” and “off” press *a graph icon* at the Raw Histogram Panel.



Choosing EXIF Data to be Displayed

EXIF data is now displayed in Grid Mode without any additional user actions.

EXIF data can now be displayed right in the Grid/Filmstrip above the thumbnail or below the thumbnail. The settings for EXIF data display are accessible through the “*gear icon*” separately for the Grid and Filmstrip modes.





Arranging Panels

1. All panels can be placed anywhere on the screen or even other monitor — *just drag-and-drop it where you want it to be.*
2. If the Filmstrip panel is outside the program window, it can be easily organized into a light-table.
3. The filmstrip can be docked at the top, bottom, or left side of the main window. All other panels — at the right or left side. You can dock a panel to the most recent docking position by pressing *an arrow icon.*



Panels and Filmstrip Settings Customization

A little gear icon at the top right corner of a panel (*or the top left corner of the filmstrip placed at the bottom*) allows customization of the panel or bar.



Toggle Panel Display

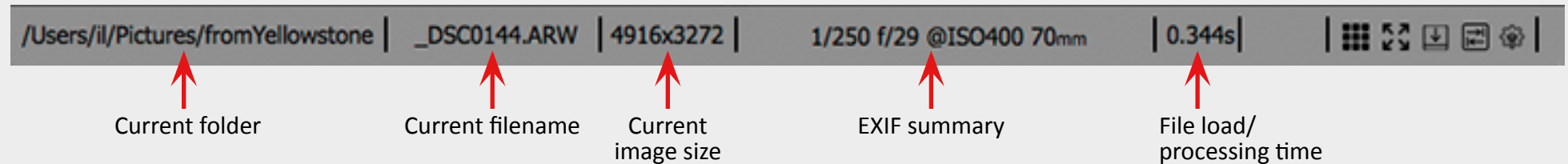
1. Every panel can be toggled open and closed through:
 - **Menu -> Panels** or a keyboard shortcut (*default or assigned*)To change panels keyboard shortcuts, please look at:
 - **Menu -> File -> Customize -> Keyboard Shortcuts -> Information Panels**
2. The **Tab** key toggles all presented on the screen panels *hide* and *unhide* together.



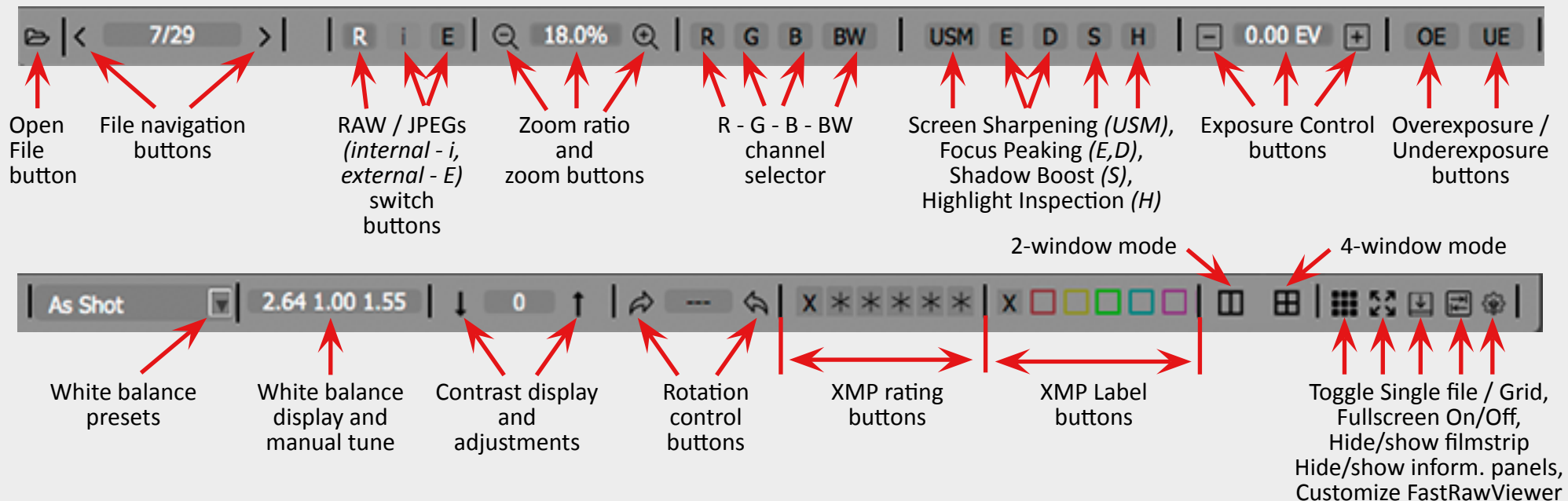
Bottom Bar Structure

Bottom Bar has both *Information fields* and *Action fields with buttons*. Given the total number of possible fields and buttons they can't be displayed all together, so the user should customize Bottom Bar according to personal preferences by choosing which fields should be *always visible*, which fields should be *visible if fits (if the size of the window permits it)*, which fields to *hide (please see the the Bottom Bar Customisation for details)*. Of course all these choices are easily reversible.

Bottom Bar Information Fields



Bottom Bar Action Buttons

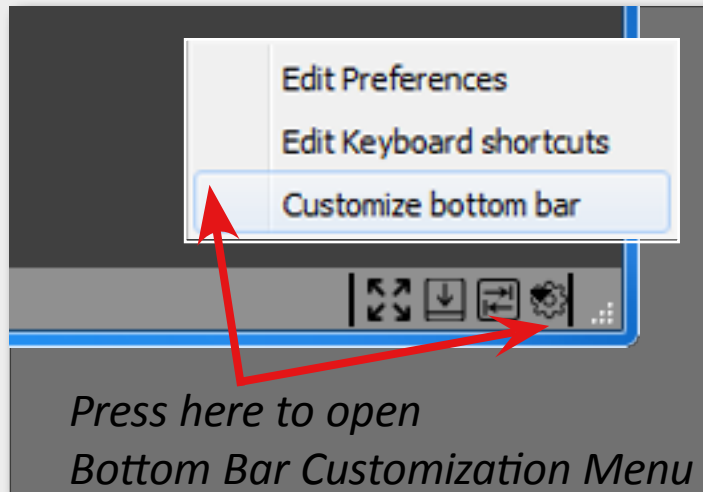




Bottom Bar Customization

1. Open Bottom Bar Customization Dialog

- Through the *gear icon* at the lower right corner of the **Bottom Bar**:



or through

- Menu -> File -> Customize -> Customize bottom bar**

or through

- Menu -> File -> Customize -> Preferences -> Interface**

press the button 

- ### 2. At the Bottom Bar Customization Dialog choose Bottom Bar options to be displayed (see the image to the right).

Bottom bar item	Visibility		
	always	if fits	hide
Open File button	<input type="radio"/>	<input type="radio"/>	<input checked="" type="radio"/>
File navigation buttons	<input type="radio"/>	<input checked="" type="radio"/>	<input type="radio"/>
Current folder	<input type="radio"/>	<input type="radio"/>	<input checked="" type="radio"/>
Current filename	<input type="radio"/>	<input checked="" type="radio"/>	<input type="radio"/>
Current file selection status	<input type="radio"/>	<input type="radio"/>	<input checked="" type="radio"/>
Selected files count	<input type="radio"/>	<input type="radio"/>	<input checked="" type="radio"/>
Current image size	<input type="radio"/>	<input checked="" type="radio"/>	<input type="radio"/>
EXIF summary	<input type="radio"/>	<input type="radio"/>	<input checked="" type="radio"/>
Zoom ratio and zoom buttons	<input type="radio"/>	<input checked="" type="radio"/>	<input type="radio"/>
File load/processing time	<input type="radio"/>	<input type="radio"/>	<input checked="" type="radio"/>
RAW/JPEG switch buttons	<input type="radio"/>	<input checked="" type="radio"/>	<input type="radio"/>
R-G-B-BW channel selector	<input type="radio"/>	<input type="radio"/>	<input checked="" type="radio"/>
Focus peaking, Shadow boost, Highlights inspection, USM	<input type="radio"/>	<input checked="" type="radio"/>	<input type="radio"/>
Exposure control buttons	<input checked="" type="radio"/>	<input type="radio"/>	<input type="radio"/>
Over/Underexposure buttons	<input type="radio"/>	<input type="radio"/>	<input checked="" type="radio"/>
White balance presets	<input checked="" type="radio"/>	<input type="radio"/>	<input type="radio"/>
White balance manual tune	<input checked="" type="radio"/>	<input type="radio"/>	<input type="radio"/>
Contrast display and adjustment	<input checked="" type="radio"/>	<input type="radio"/>	<input type="radio"/>
Rotation control buttons	<input type="radio"/>	<input checked="" type="radio"/>	<input type="radio"/>
XMP Rating buttons	<input type="radio"/>	<input type="radio"/>	<input checked="" type="radio"/>
XMP Label indicator	<input type="radio"/>	<input type="radio"/>	<input checked="" type="radio"/>
XMP Label buttons	<input type="radio"/>	<input type="radio"/>	<input checked="" type="radio"/>
Fullscreen, hide/show filmstrip/dock, and customize buttons	<input checked="" type="radio"/>	<input type="radio"/>	<input type="radio"/>

Text fields (Filename, EXIF) width:




Color Management

Menu -> File -> Customize -> Preferences -> Color Management

If you use Custom monitor profile

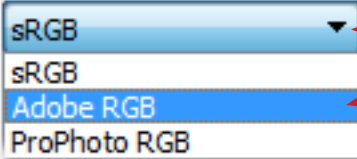
Do not override if the system color profile is already the one you want to use; in this case *"Use color profile of display"* is enough.

☒ Use color profile of display upon which FastRawViewer launches
(Profile description: sRGB IEC61966-2.1)

Override display color profile: 

If you use a Wide Gamut monitor

Try to use **Adobe RGB** as the selected color space (*"RAW processing color space" field*)

RAW processing color space: 

Color space for untagged JPEGs

If your Custom monitor profile is accurate

You may benefit from selecting **ProPhoto RGB** (*"RAW processing color space" field*)

If you use a generic monitor with a canned profile

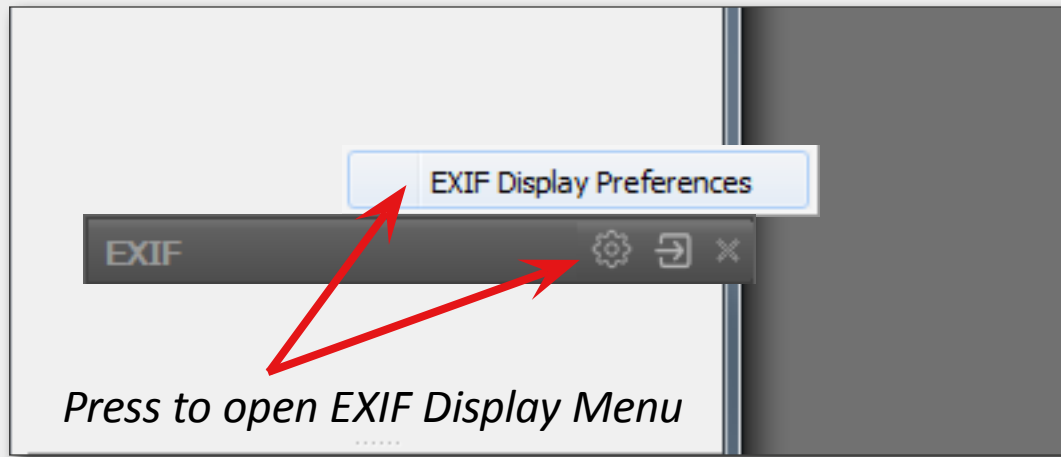
The image may look better with color management **off**
(leave the box *"Enable Color Management"* at the top of Color Management Menu unchecked)

☐ Enable Color Management

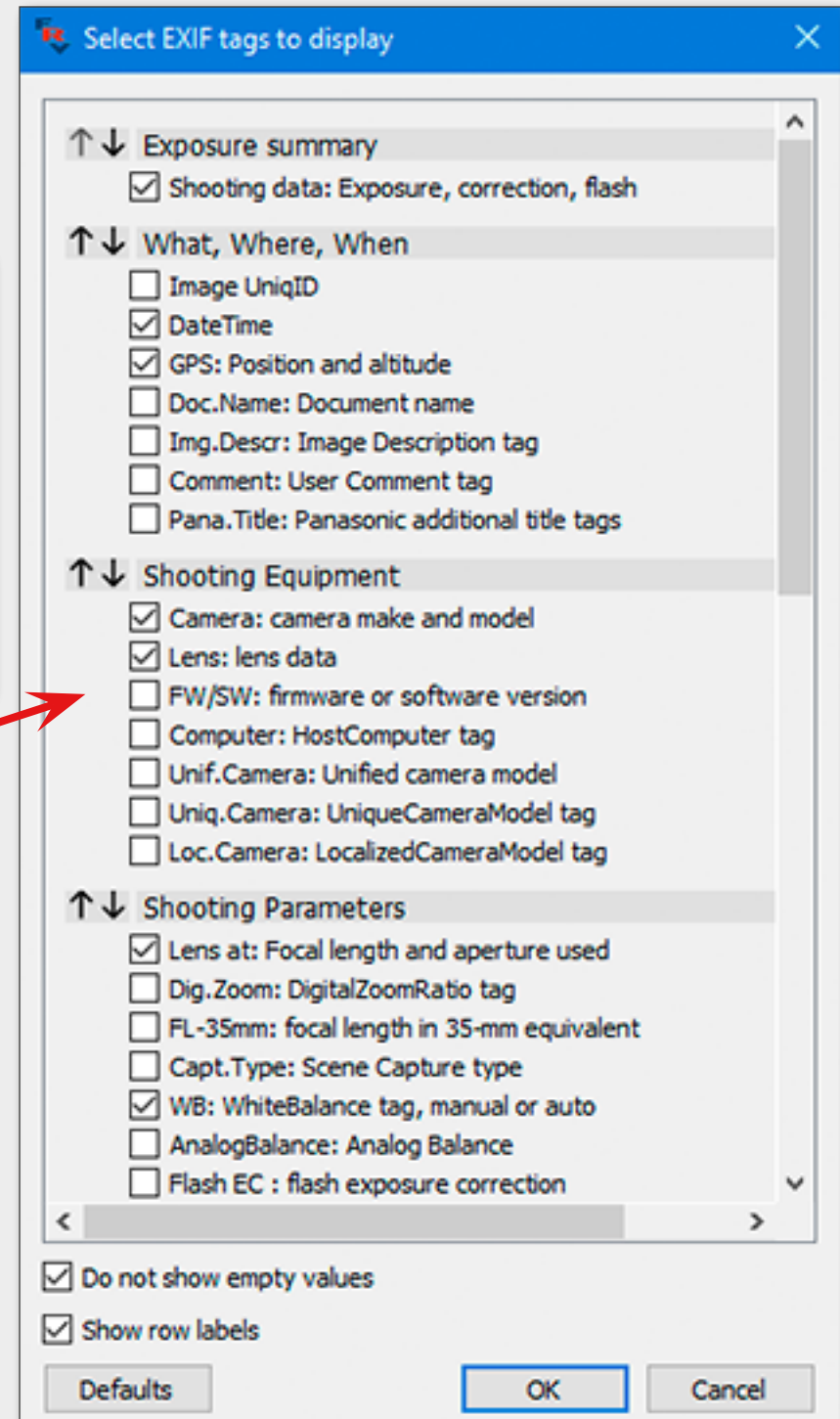


Customization of EXIF Fields display

1. At the top right corner of the EXIF panel press *gear* button and open EXIF Display Preferences:



2. Choose EXIF fields to be displayed (see the image to the right).



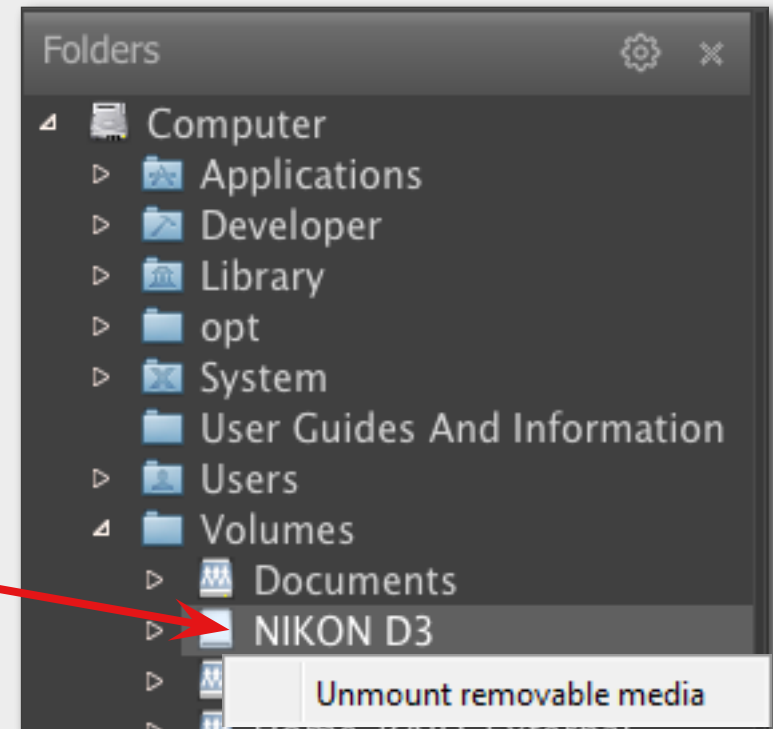


Access Files and Folders Using Folders Panel

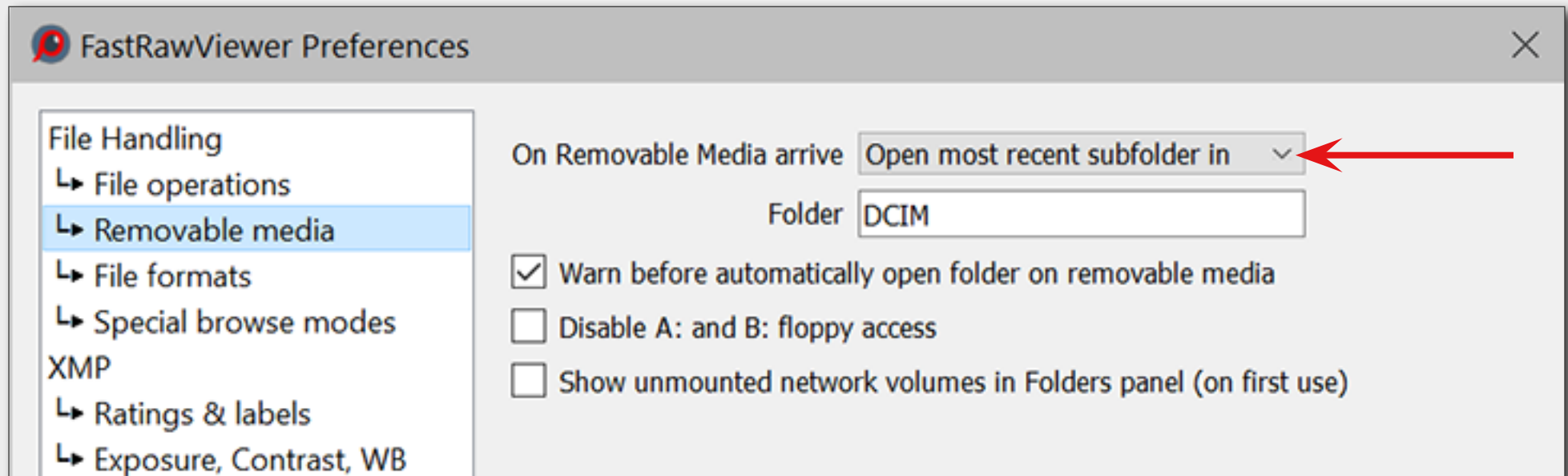
Folders and files can be accessed through a folder tree.

Working with a Memory Card

1. When you mount removable media in your system, it will immediately appear in the folder tree.
2. If you don't need it anymore, you can eject it directly through the Folder panel (*right click on removable media folder name and choose "Unmount removable media"*).
3. You can have the most recently created subfolder on the removable media be opened in the DCIM folder:



Menu -> File -> Customize -> Preferences -> Removable media

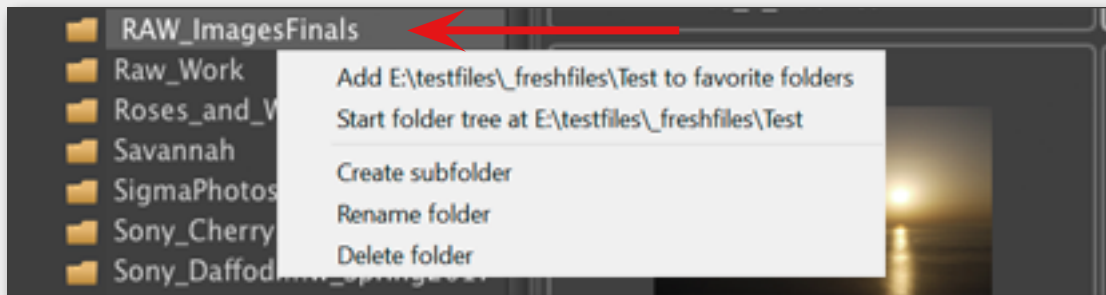
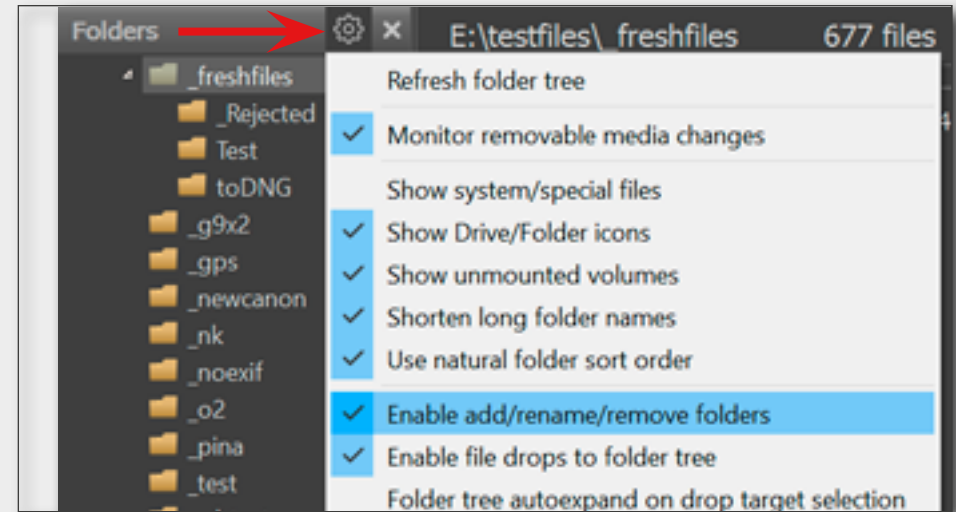




Editing the Folder Tree

The Folder panel settings now contain a setting to **Enable add/rename/remove folders** (access through gear icon).

Also here you can disable Drag and Drop from Grid/Filmstrip/Single View to the folder tree (enabled by default) and switch on **Folder tree autoexpand on drop target selection**.



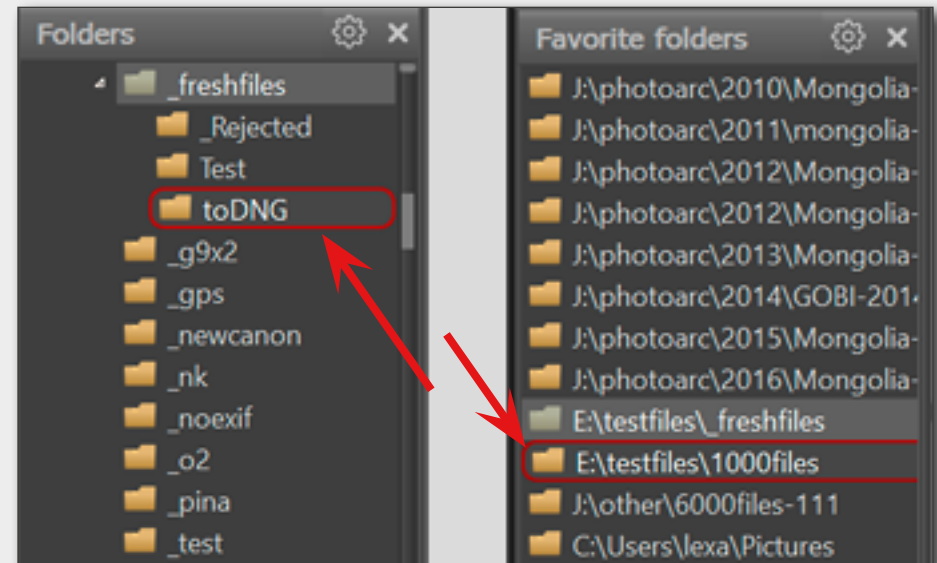
When **Enable add/rename/remove folders** is on, you can choose the desired action in the context menu (right-click on the folder):

Drag-and-Drop Files to Folder Tree

The folder which is currently under the drop cursor is automatically highlighted in red.

You can not only drop files into the Folders panel, but also into the Favorite Folders panel.

With default settings, the dropped file is copied, not moved.



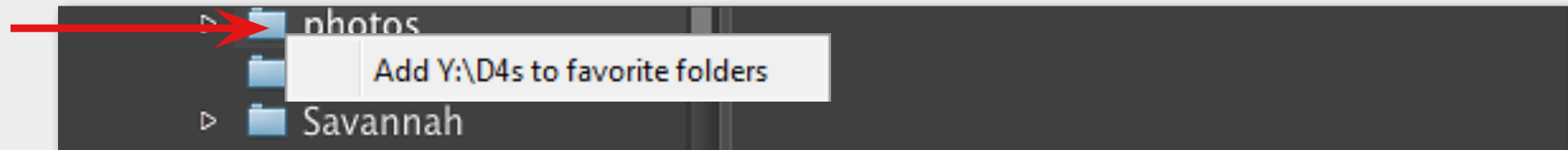


Working with the Favorite Folders Panel

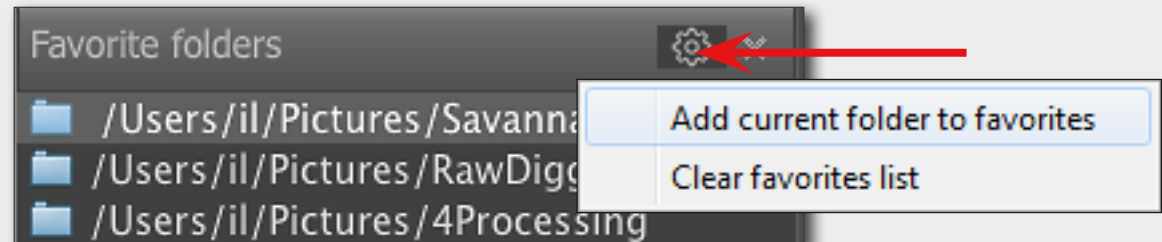
This panel allows one to keep a list of often-used folders, and lets one readily access them.

Add a Folder to Favorite Folders

1. Right-click on the selected folder in the Folder tree and use the appearing context menu.

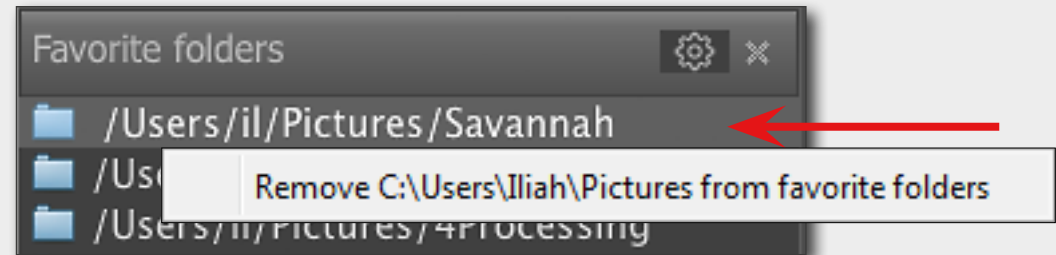


2. Highlight the selected folder in the **Folder Tree** and press the **Gear** icon on the **Favorite Folders** panel to access the context menu.



Remove a Folder from Favorite Folders

1. Right-click on the selected folder in the **Favorite Folders** and use the appearing context menu.



Open folders

2. A click on an item (folder) in this list opens the chosen folder in the **Filmstrip/Thumbnails** panel
3. A double-click opens an item in the **Filmstrip/Thumbnails** panel and loads the first file in the main window.

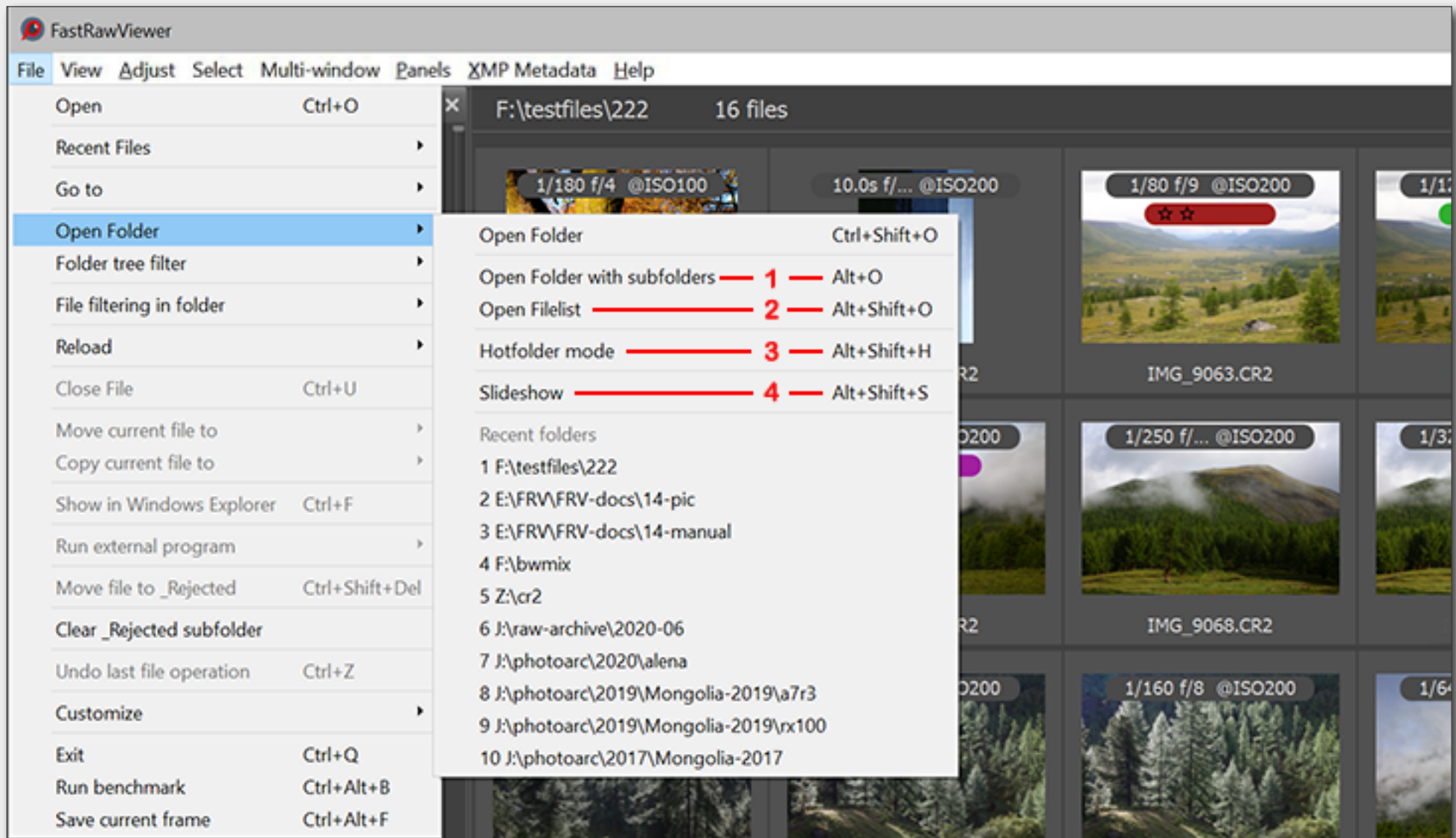
Clear Favorite Folders List

1. Press the **Gear** icon on the **Favorite Folders** panel to access the context menu.



Special Folder Browsing Modes

1. **Subfolder** browse mode
2. **Filelist** browse mode (*Virtual folder mode*)
3. **Hotfolder** mode
4. **Slideshow** mode





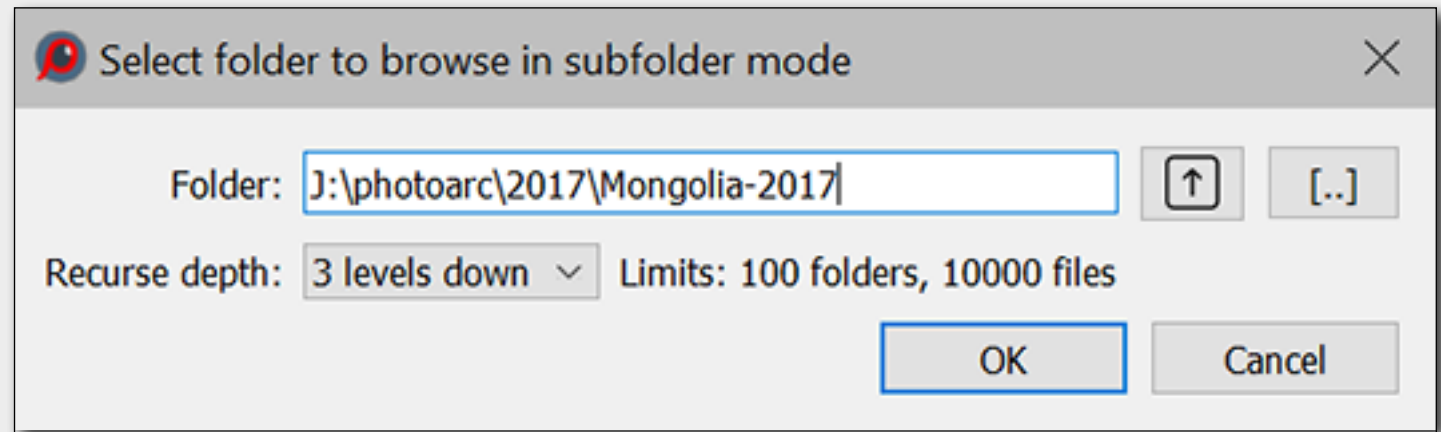
Subfolder Browse Mode

In subfolder browse mode, all of the files found in those nested folders will be presented as a “flat list.” Sorting is possible both by the “full path” and also just by filename.

Switching to Subfolder Browse Mode

- **Alt-O / Option-O** *or* **Menu -> File -> Open Folder -> Open folder with subfolders**
- **Context menu in the Folders panel -> Open in subfolder mode**

In both cases, a dialog for scanning the subfolders will appear for a user to pick the initial folder for browsing (*arrow up allows one to easily go a level up*), and depth of browsing.



The limits are set through **Preferences -> Special browse modes section**.

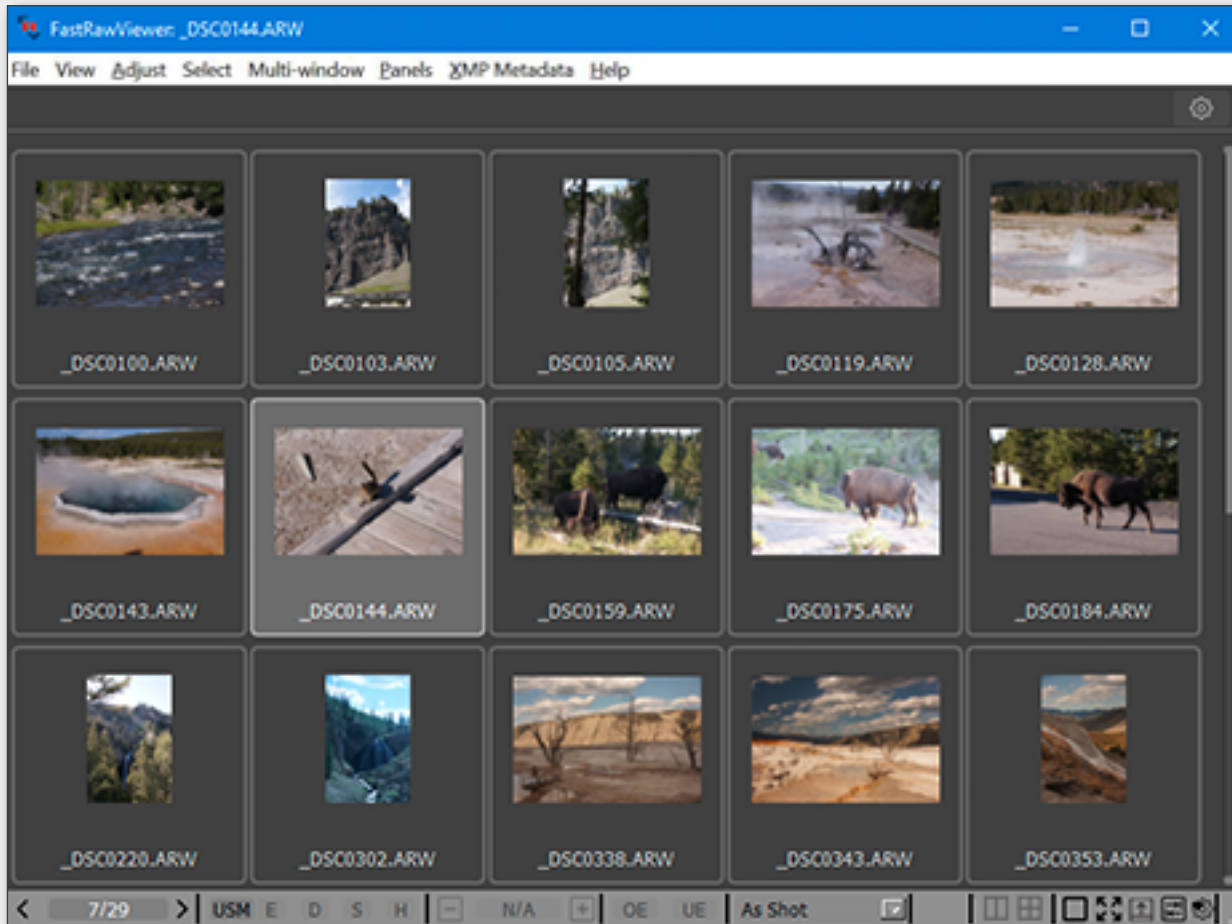
Exiting Subfolder Browse Mode

- **Explicit exit:** **Menu -> File -> Open File** *or* **Menu -> File -> Open Folder -> Open Folder**
- **Implicit exit:** drag and drop (*file or folder*) into the application window, selecting a folder in the **Folders** panel.



Grid View Mode

If **FastRawViewer** is launched without indicating a filename, it will start in **Grid View** mode, displaying the thumbnail previews of all of the supported files from the selected folder (*current folder, if switched to Grid View mode from Single FileView mode*) :



Navigating files

- Keyboard: arrowkeys in the main window, PgUp/PgDn, Home/End; customizable shortcuts for **Next File/Prev. File** and **First/Last File** in folder.
- Mouse: the wheel scrolls through the contents of the folder up and down.

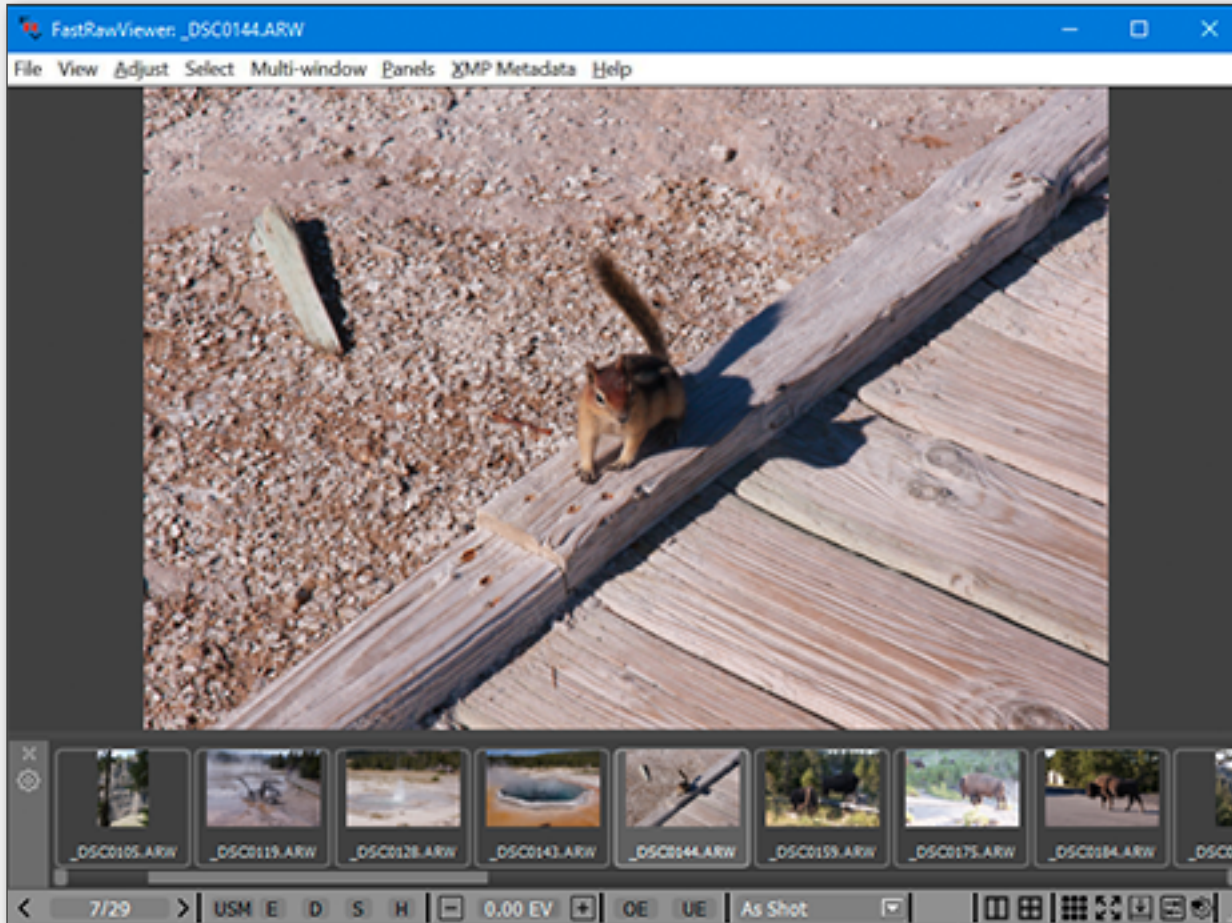
Switching to Single File View Mode

- **G** or **Menu -> View -> Switch to single image** or
- **Enter** or A double-click on a file in the grid



Single File View Mode

If **FastRawViewer** is launched over a specific file (for example, by dropping a RAW file onto the program's icon, or by double-clicking a file which is associated with FastRawViewer, etc.) it will start in **Single File View** mode.



Navigating files

- Keyboard: **arrowkeys** in the **Filmstrip**, customizable short-cuts for **Next File/Prev. File** and **First/Last File** in folder.
- Mouse: the wheel scrolls through the contents of the Filmstrip left and right;
- Buttons for navigating through the current folder: previous file, number of file in the file list and the length of the list, next file;

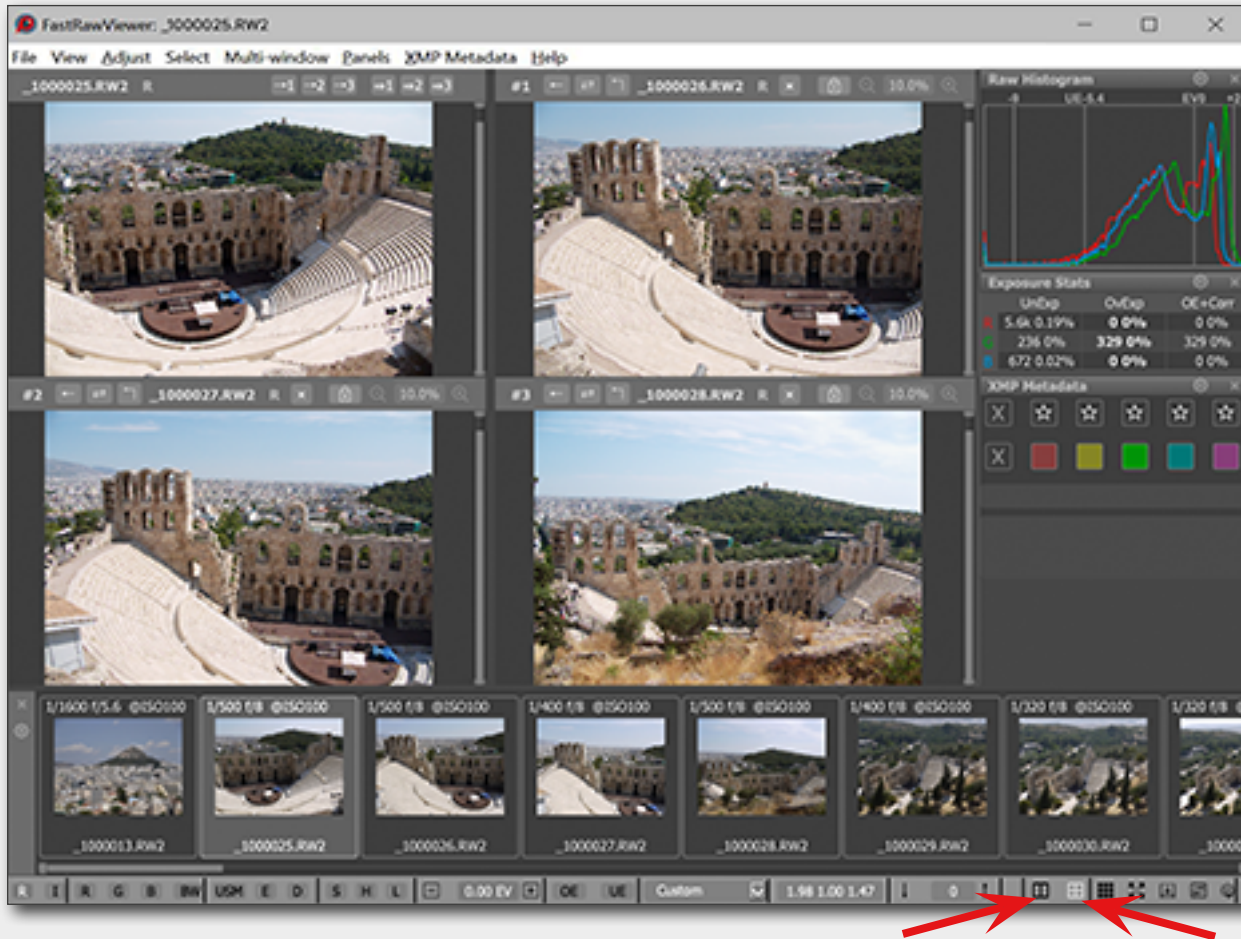
Switching to Grid View Mode

- **G** or **Menu -> View -> Switch to image grid**
- **Esc** or **Menu -> View -> Close single image** (*Esc/close single image also exits full screen mode*)



Switching to **Multi-window mode** can be done through **Menu -> Multi-window -> Window layout**.

Switching/toggling between multi-window and single view modes can also be done **via the buttons** ("2-window mode" or "4-window mode") in the right part of the application's bottom bar.



- The top-left window (*or just left for two-subview mode*) is the main window, analogous in function to the window in Single Image View.
- The other windows are secondary (additional/ancillary), they display copies of some images that cannot be edited.
- The order of the windows (*main is at the top left*) is the default. This order can be changed via **Preferences -> Multi-window mode -> Main/secondary window order**

To populate windows, you can use the following options:

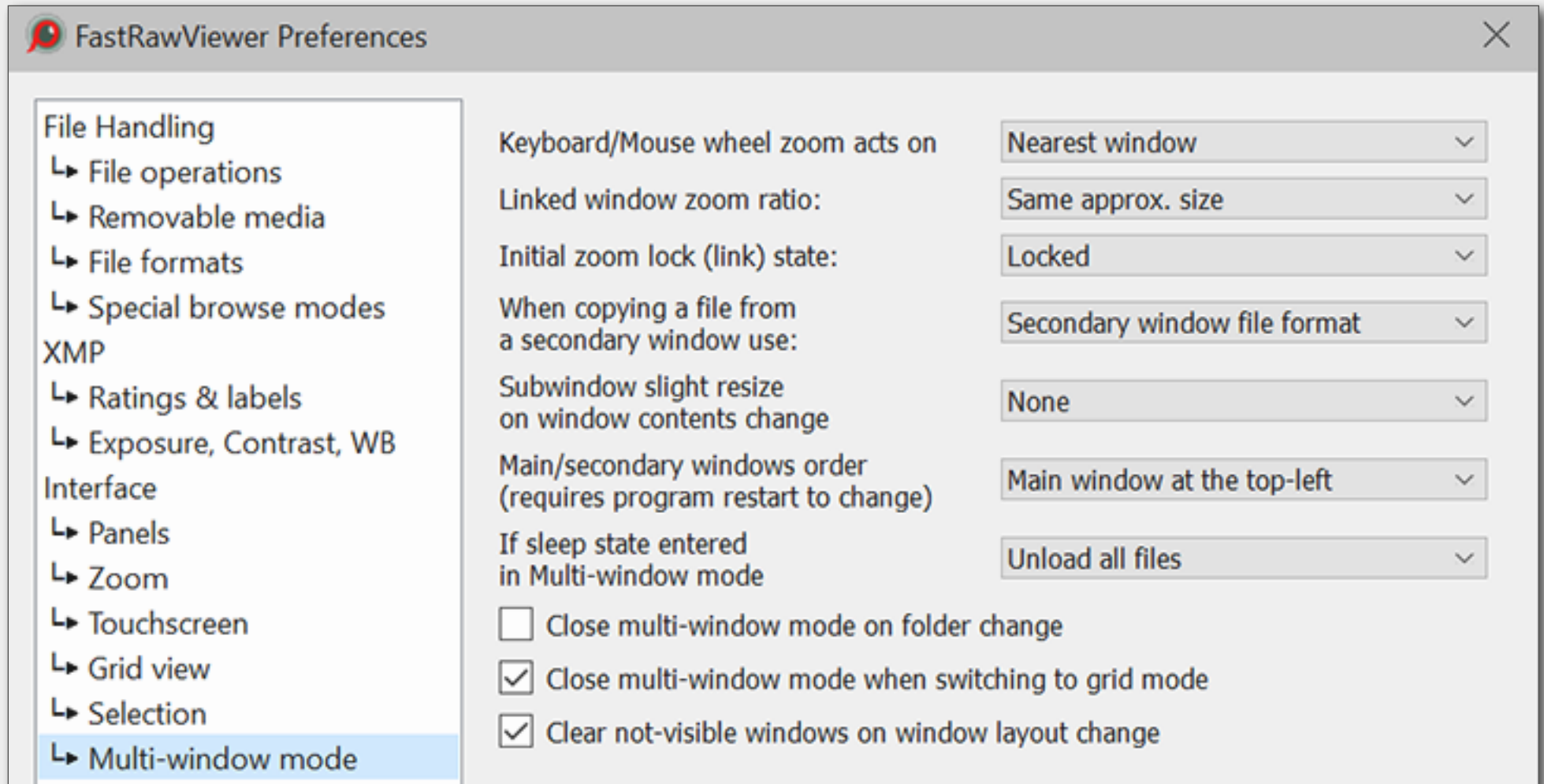
- **Drag-n-drop** from the Filmstrip to the desired window or from one window to another one;
- The file's **context menu**, both in the window or in Filmstrip;
- **Copying an image from the main window** to a secondary one, using menu options/shortcuts or the buttons in the left part of the top panel of the main window



Multi-window Mode Customization

Multi-window Mode Settings

These settings are located in a separate **Multi-window mode tab** of FastRawViewer **Preferences**.



Hotkeys

The hotkeys for multi-window mode are set through **Menu -> File -> Customize -> Keyboard Shortcut -> Multi-window operations** tab.



Choose XMP Label and Rating Style

- **Menu -> File -> Customize -> Preferences -> Rating & labels**

File Handling

- ↳ File operations
- ↳ Removable media
- ↳ File formats
- ↳ Special browse modes

XMP

- ↳ **Ratings & labels**
- ↳ Exposure, Contrast, WB

Interface

- ↳ Panels
- ↳ Zoom
- ↳ Touchscreen
- ↳ Grid view

XMP Label style: Color labels (Adobe Lightroom defaults) ▼

XMP Custom labels

Select Second

Approved Review

To Do

☐ Use XMP Reject rating (used by Adobe Bridge)

☐ Use custom string for not set label: None

☐ Write photoshop:Urgency tag with labels (for old Camera One)

Visual feedback on rating/label change: None ▼

Assign XMP Label and Rating to the Image

- **Menu -> XMP Metadata** *or* *corresponding keyboard shortcuts*

Change Keyboard Shortcuts

- **Menu -> File -> Customize -> Keyboard Shortcuts -> XMP Rating**
- **Menu -> File -> Customize -> Keyboard Shortcuts -> XMP Labels**



Sort & Filter Panel

The panel **Sort & Filter** controls the sorting and filtration of files.

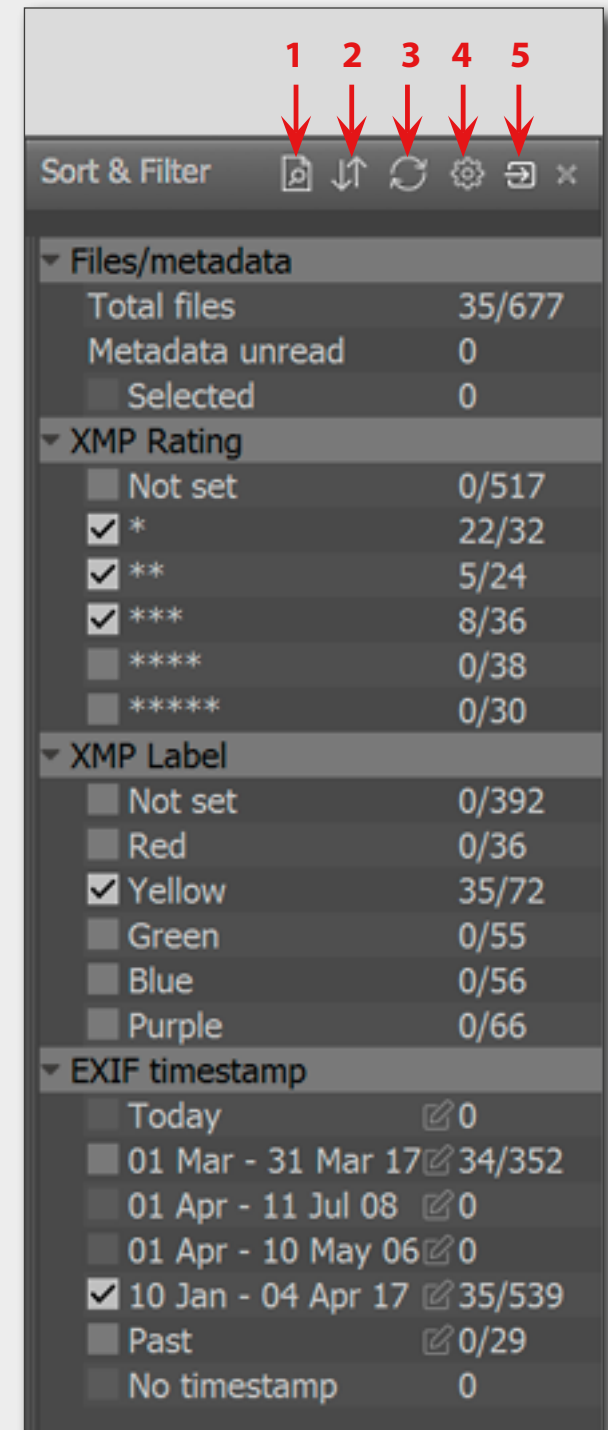
The panel's icons at the title bar are follows:

1. Filter files by name/mask
2. File Sorting
3. Re-reading the current folder
4. Panel Settings
5. Move back to dock area.

Sorting: the sorting order can be changed on the fly.

Filtration: checkboxes to the left of the sorting and filtering parameters allows to define conditions, and only files that pass the filtering conditions will be displayed.

- In **XMP Rating/XMP Label** groups, you can set the desired combination of ratings and labels.
- In the **Exif Timestamp** group, you can select the necessary ranges of dates. You can edit those ranges if necessary.
- **Filtrng files by name/mask** allows several different options to define files to be displayed.

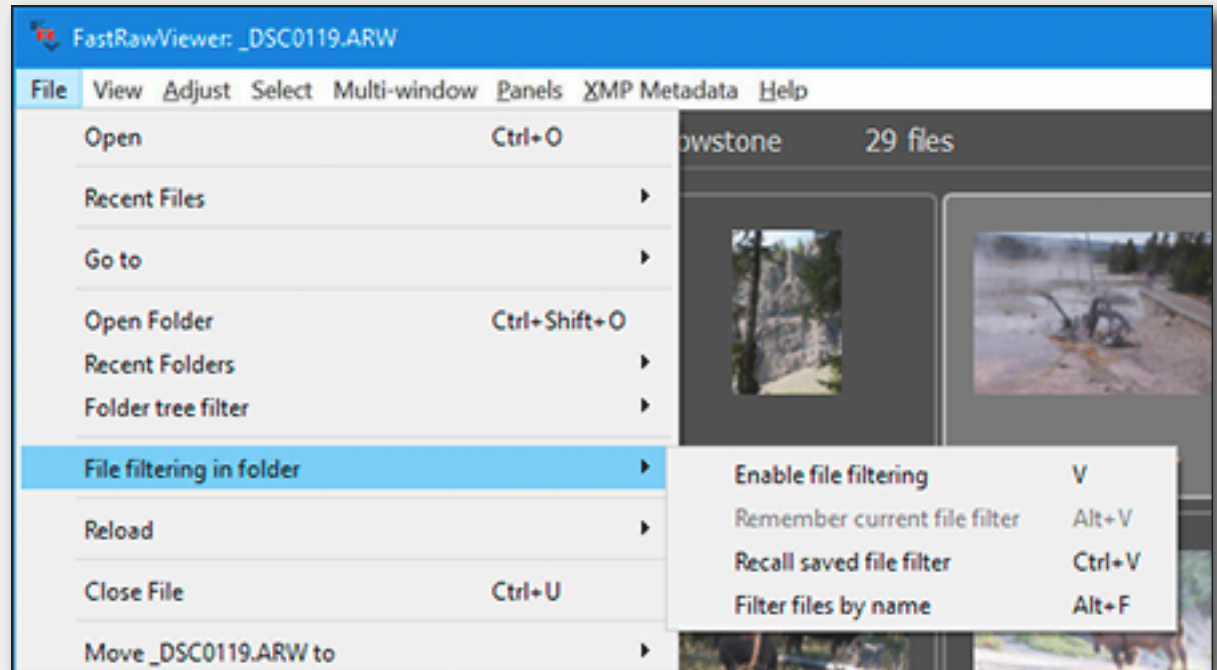




Saving, Cancel and Restore Filters

To **Save**, **Cancel**, and **Restore** filters, use:

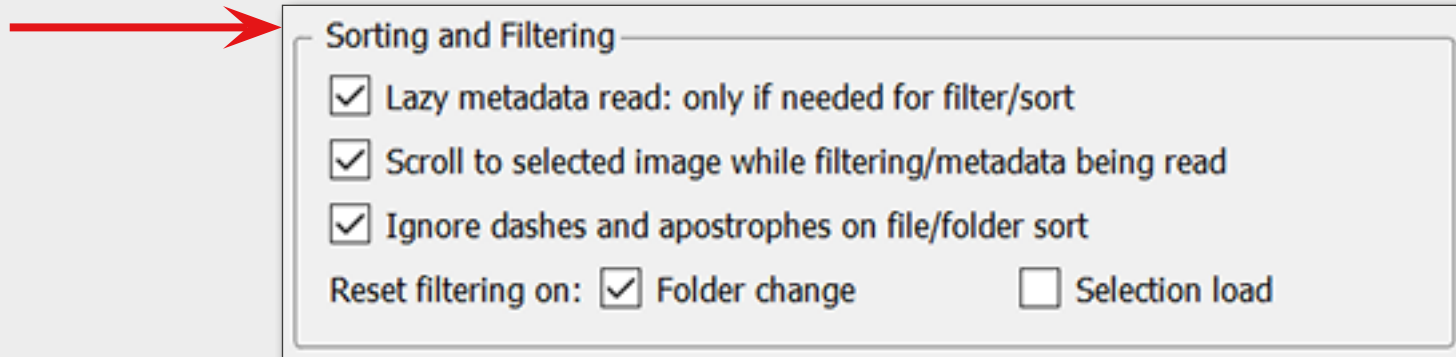
- **File** -> **File filtering in folder**
or corresponding hotkeys



File Sorting Settings

With standard settings, the metadata (*EXIF*, *XMP*) is read only when this data is needed – for Icon display, or when filtering is on. This accelerates the browsing. This can be changed in the preferences by switching off **File Handling - Sorting and Filtering - Lazy metadata read**.

- **Menu** -> **File** -> **Customize** -> **Preferences** -> **File Handling** -> *Sorting and Filtering*



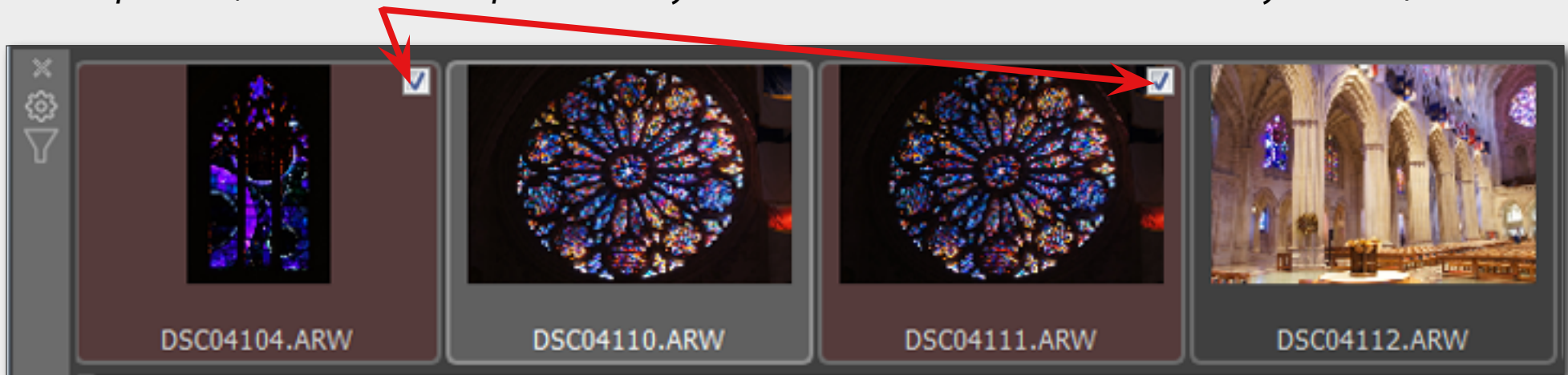


To fulfill **Batch** operations (such as copy, move, rotate, set rating and label etc.) with multiple files you will first have to select those files.

File Selection

To mark a file for group operations in **Grid View** or **Filmstrip** panel:

- **Ctrl-Click** on the file preview thumbnail;
- or*
- Set/unset a checkmark in a checkbox in the upper-right corner of the preview thumbnail (the checkbox appears for the files that are currently unmarked when you hover a mouse over its preview; the checkbox is permanently visible for those files which are already marked).



or choose the actions through:

- **Menu -> Select**

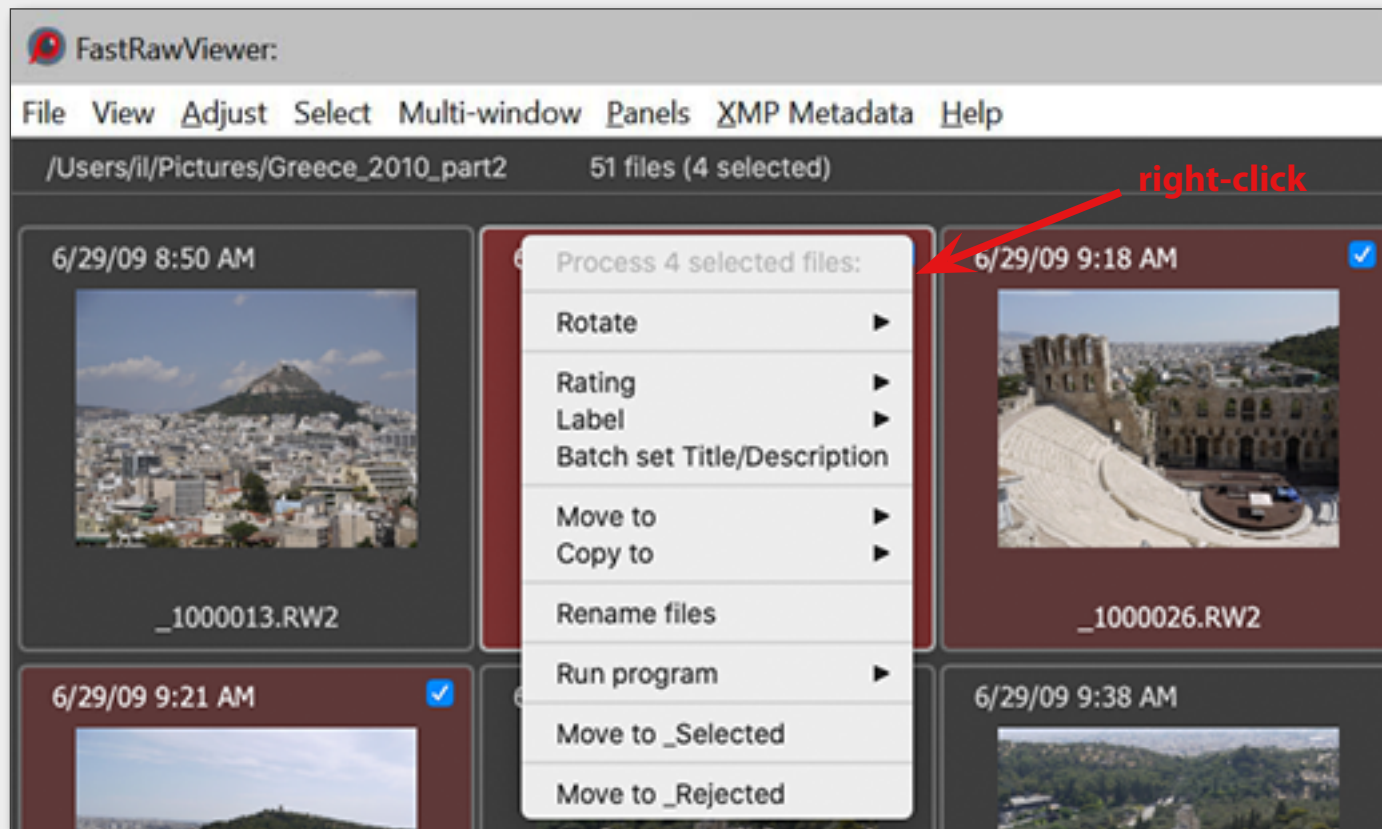


To fulfill operations with multiple files (*such as copy, move, rotate, rename, set rating and label etc.*) with multiple files you will first have to select those files.

Operation with Multiple Files

Operations with multiple selected files available through:

- **Context menu** (*activated by right-clicking on any of the marked files*)



The context menu acts:

- On the group of selected files in Grid/Filmstrip, when the menu is called up for a file within the group of selected files
- On one file in all other cases.

or (if the option "Single file keys work for multiple files too" was checked out in **Menu -> FastRawViewer -> Customize -> Preferences -> Selection**) use:

- **Menu -> Select/Batch**



Renaming Files

To rename files, you can use:

- **Context menu (*Rename file(s)*):** in **Grid view** mode, **Filmstrip**, **Single view** mode, secondary windows (*in Multi-window mode*)
- **Menu -> File -> Rename File(s)** or the shortcut **Shift-F2**

If the setting **“Single File keys works for multiple files too”** is turned off, then to rename several selected files use **Menu -> Select/Batch -> Rename Files**

Generating Names for Rename

When renaming one file, a simplified renaming dialogue pops up on the screen, where you can simply type the new filename, press Enter, and the file will be renamed.

When renaming several files, or when the **Extended Parameters** checkbox is checked when renaming a single file, the full renaming dialogue will be displayed. →

Please read the FastRawViewer manual for detailed description of how to work with various fields of this dialog to create files names.

Rename 176 files
(and 251 associated files)

Rename pattern: /Filename/_/4d/

☐ Enable history

Sample: _DSC4433.ARW -> _DSC4433_0939.ARW

Token: Filename

Sequence start: 939

On conflict or error: Stop

Cancel GO



Of course the composition is a priority while sorting images. If the image you are viewing is composed well next thing you want to know is: if the technical quality of the image good enough.

FastRawViewer offers essential **Image Assessing Tools**:

FastRawViewer Image Assessing Tools

RAW Histogram

Over- and Underexposure Indication and Statistics

Focus Peaking

Screen Sharpening

Shadow Boost

Highlight Inspection

Exposure Compensation

White Balance

Contrast (Tone) Curve

Using these tools is super easy. They can be activated and deactivated through the **Shortcuts**, or the **Bottom Bar**, or through the **Menu**. Parameters for the tools are set through the **Preferences**.

The detailed information about these tools can be found in FastRawViewer manual.

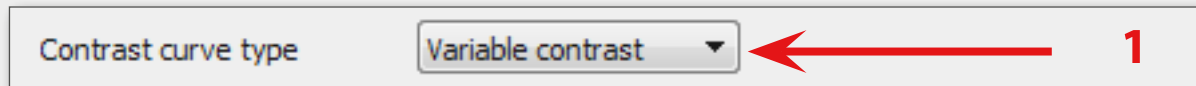
They also briefly covered in tips.



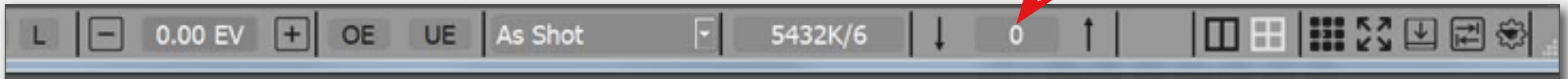
Matching FRV Image Display to Adobe CameraRaw/Lightroom

Defaults should be adequate, if you need to restore just these ones, here are the settings:

1. At the **Menu -> File -> Customize -> Preferences -> Image Display -> Contrast curve type** choose **Variable Contrast**:



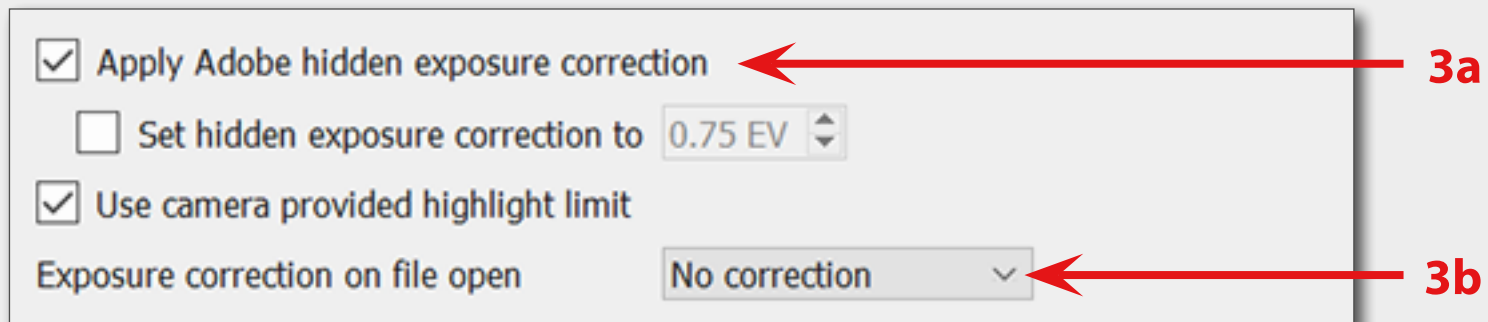
2. At the *Contrast Curve drop-down menu* choose "0" (standard) curve:



3. At the **Menu -> File -> Customize -> Preferences -> Exposure**

3a. "**Apply Adobe hidden exposure correction**" is "on" (*check the proper box*)

3b. Choose **No correction** from the drop-down **Exposure correction on file open**



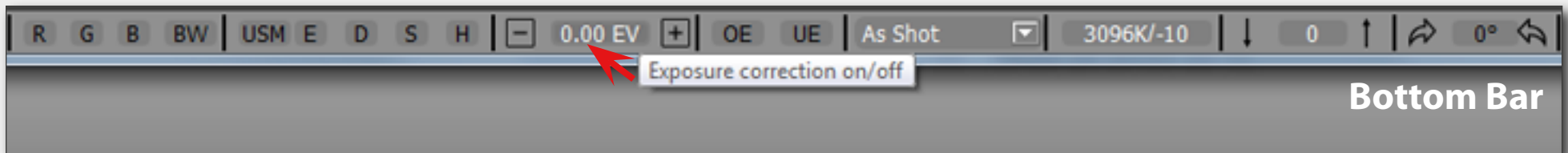


Matching FRV Image Display to RAW Converter

If the image display in FastRawviewer does not match the display in Adobe ACR/Lr or other converter (*brightness is different, color is off, etc.*), please check the following:

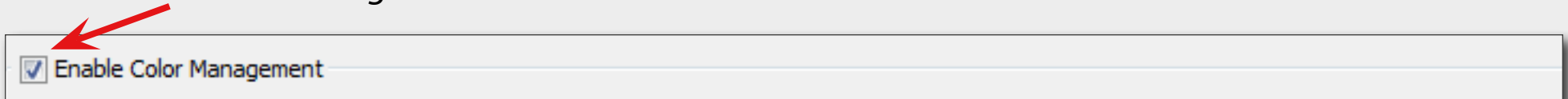
Disable Auto Exposure Correction

- Press **A** *or* Toggle **Exposure Correction** button at the **Bottom Bar**



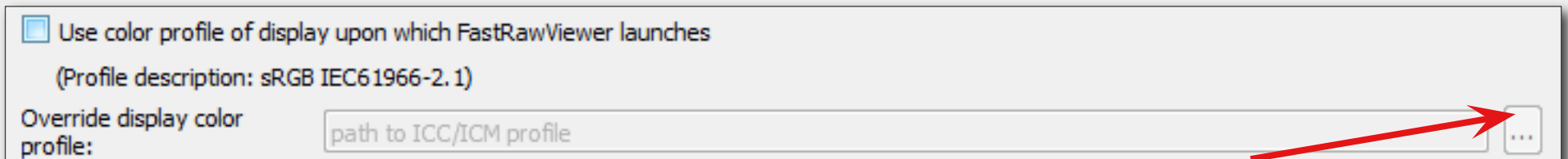
Enable Color Management

- Menu -> File -> Customize -> Preferences -> Color Management -> check the box "Enable Color Management"**



Choose correct Monitor Profile

If colors still look off, please check at the same **Color Management** menu that you've chosen the correct Monitor Profile

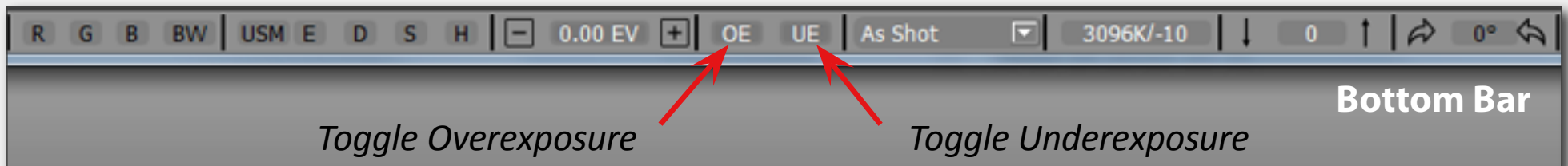




Checking for Over- and Underexposure

Toggling Over- and Underexposure Indication

- ☐ O **Menu -> View -> Overexposure Display**
- ☐ U **Menu -> View -> Underexposure Display**
- or Toggle *OverExposure* (OE) and *Underexposure* (UE) buttons at the **Bottom Bar**



Over- and Underexposure Statistics

At the Information Windows Dock you can find **Over- and Underexposure Statistics Window** (see the picture to the right).

The 'Exposure Stats' window displays the following data:

	UnExp		OveExp		OE+Corr	
R	0	0%	18	0%	143	0%
G	0	0%	26	0%	17k	0.4%
B	0	0%	30	0%	29k	0.7%

To display **Overexposure Statistics** before and after applying exposure compensation, choose **Always display OE + Corr column** in Exposure Stat panel settings (gear icon).



Over- and Underexposure Display Settings

To choose proper settings for Over- and Underexposure overlays use:

- **Menu -> File -> Customize -> Preferences -> Exposure -> Over/Underexposure Display**

The screenshot shows the 'Over/Underexposure display' settings in Fastraw Viewer. The left sidebar lists various preferences categories, with 'Exposure' selected. The main panel shows the following settings:

- Exposure adjustment steps: small: 1/3 EV, big: 1 EV
- Over/Underexposure display:
 - ☒ Exposure adjustments affect OverExposure display
 - Under/Overexposure layer opacity: 1.00
 - ☐ Use camera linearity limit to detect clipping
 - Fixed underexposure detection limit: 8.0 EV below saturation
 - ☐ ISO-based underexposure limit:
 - 7.0 EV @ISO1600
 - 9.0 EV @ISO200
 - 3.0 EV @high ISO

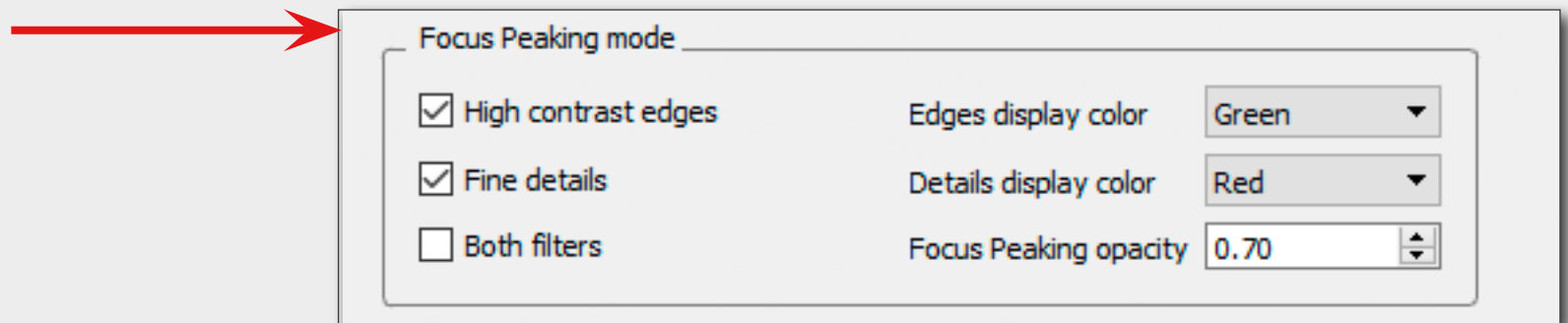


Focus Peaking

The Focus Peaking filter allows to assess the sharpness of the image and locate the areas where the **sharp edges (E)** and/or **fine details (D)** exist.

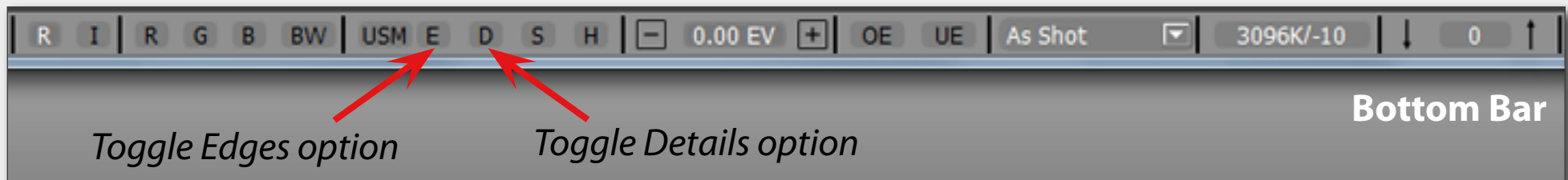
To Control Focus Peaking Options

- **Menu -> File -> Customize -> Preferences -> GPU Processing -> Focus Peaking Mode**



Circle Focus Peaking (Edges/Details/Both/Off)

- Press **P** or **Menu -> View -> Toggle Focus Peaking**
- or Toggle **Edges (E)** and **Details (D)** buttons at the **Bottom Bar**





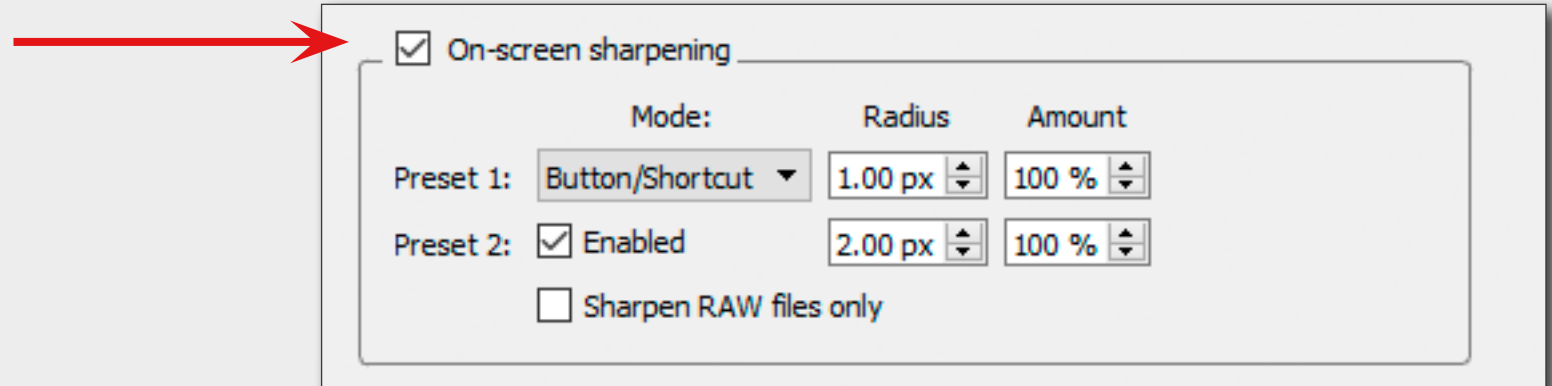
While being processed in a RAW converter, RAW images generally have had some sort of sharpening algorithm applied to them. In FastRawViewer, the sharpening is applied only for display.

Screen Sharpening


Setting the Level of Sharpening

You can switch between two levels of sharpening:

- **Menu -> File -> Customize -> Preferences -> Sharpening**



Toggle Screen Sharpening

- Press  **S** *or* **Menu -> File -> Screen Sharpening**
- *or* Toggle **Screen Sharpening (USM - unsharp mask)** button at the **Bottom Bar**





For ETTR practitioners or those who need to explore the shadows of an image, we have a tool ready for you - Shadow Boost; it lifts the shadows without clipping the highlights.

All you need to do is set the Shadow Boost amount, and apply it using Shift+S. This will allow you to see the level of noise in the shadows and to check if they are preserving details and colors well.

Boosting Shadows

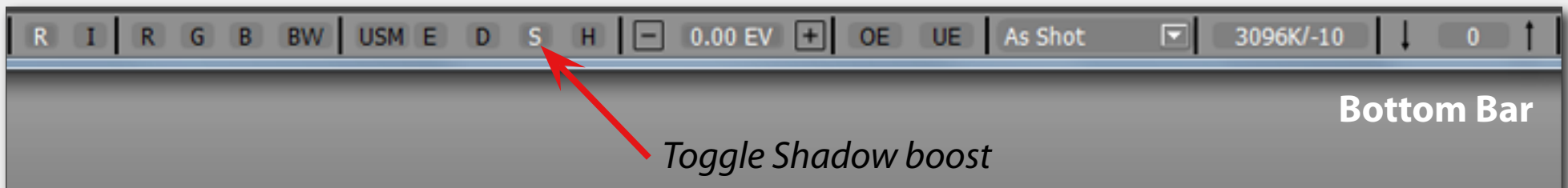
To Set the Amount of Shadow Boost

- **Menu -> File -> Customize -> Preferences -> Image Display -> Boost Shadows amount**



Toggle Shadow Boost on/off

- Press **Shift+S** or **Menu -> View -> Shadow Boost**
- or Toggle **Shadow Boost (S)** button at the **Bottom Bar**



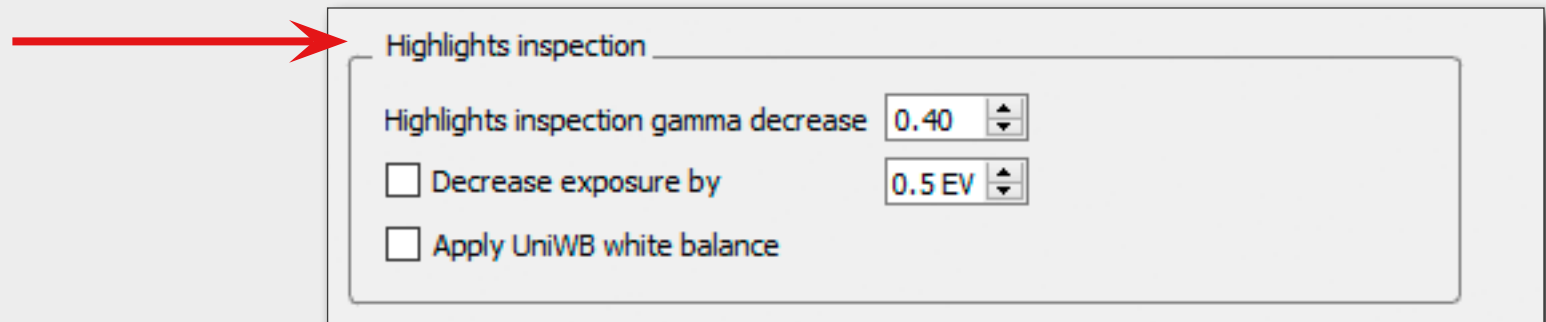


Highlight Inspection mode does the “opposite” of the **Shadow Boost** mode: the brightness of the shadows and midtones is decreased, thus the image looks darker; the contrast in the highlights is increased; white balance can be “canceled” by setting it to UniWB. As result it allows to evaluate details in highlights and inspect which channels are clipped (*if any*) and where.


Highlights Inspection

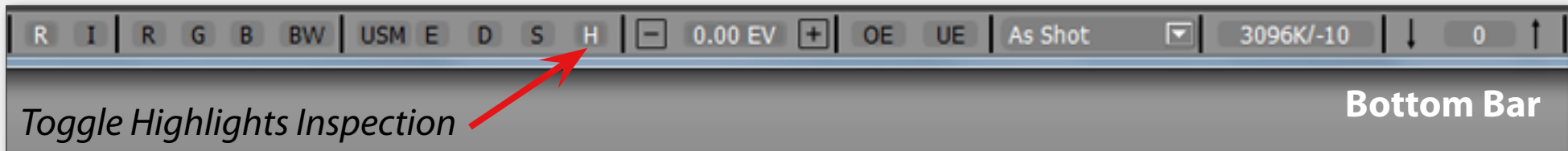
Choose Settings for Highlights Inspection

- **Menu -> File -> Customize -> Preferences -> Image Display -> Highlights Inspection**



Toggle Highlights Inspection on/off

- Press  or **Menu -> View -> Highlights inspection**
- or Toggle *Highlight Inspection (H)* button at the **Bottom Bar**





You can save a lot of time spent on adjusting images in Lr/ACR or RPP, if you select and apply adjustments to **Exposure**, **White Balance**, and **Orientation** right in **FastRawViewer**, while browsing and save the applied settings in sidecar XMP and/or RPPS files. Raw converter program will be picking up those sidecar files prepared in **FastRawViewer** as the starting point for conversions.

This technique works well in combination with **Propagation** (*see the tip "Time-saver: Propagation"*)

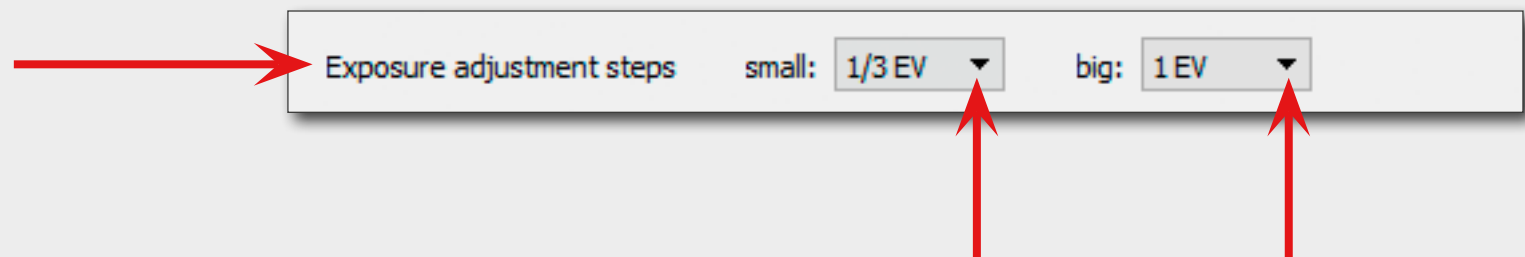
Controlling Exposure Correction (#1)

Switch Auto Exposure Correction "on"

- Press **Shift+A** or **Menu -> Adjust -> Auto Exposure Correction**

Choosing the Step Size for Exposure Correction

- Menu -> File -> Customize -> Preferences -> Image Display -> *Exposure adjustment steps***





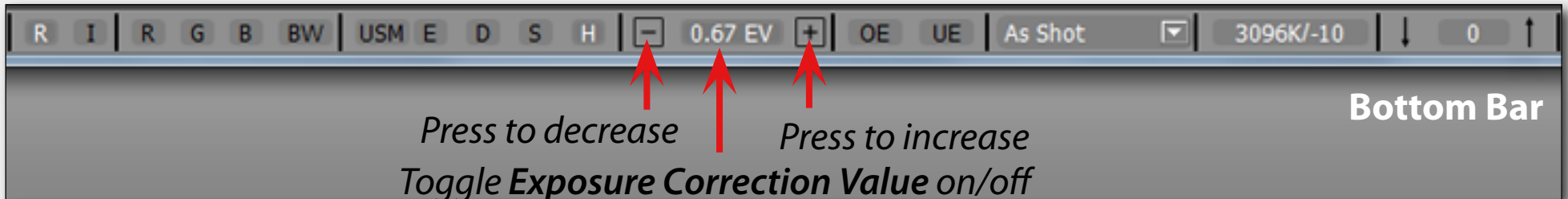
Controlling Exposure Correction (#2)

Switch Auto Exposure Correction on/off

- Press **A** or **Menu -> Adjust -> Exposure Correction**
- or Press the field *Exposure Correction Value* at the **Bottom Bar**

Increase/Decrease Exposure Correction

- Press **Alt+"+"** / **Alt+"-"** or
- Click **+** / **-** at the lower **Bottom Bar**





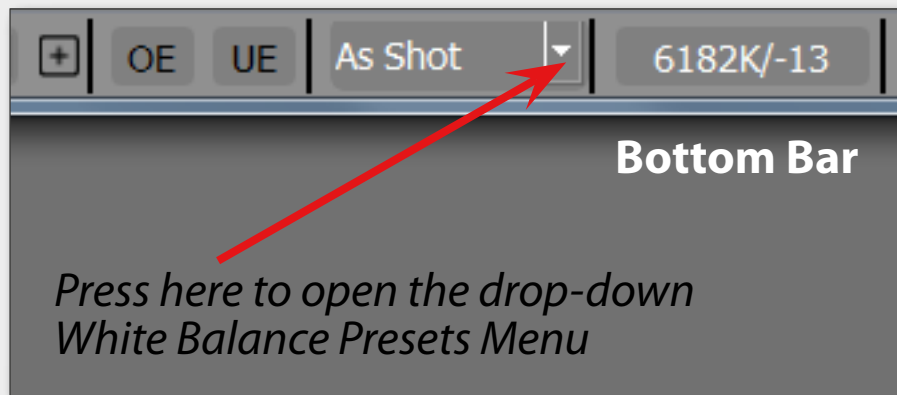
Quick Way: White Balance Presets

Cycle between Auto/As Shot/Daylight/Custom White Balance Presets

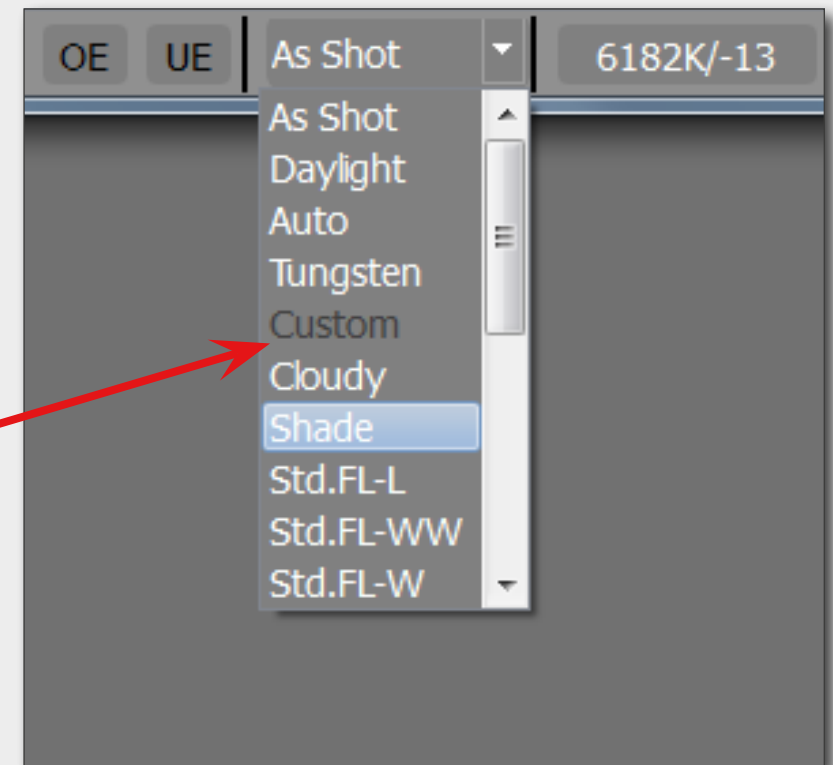
- Press **W** or **Menu -> Adjust -> Toggle White Balance**

More White Balance Presets

1. At the Bottom Bar:



2. choose one of the White Balance presets
(see the image to the right).



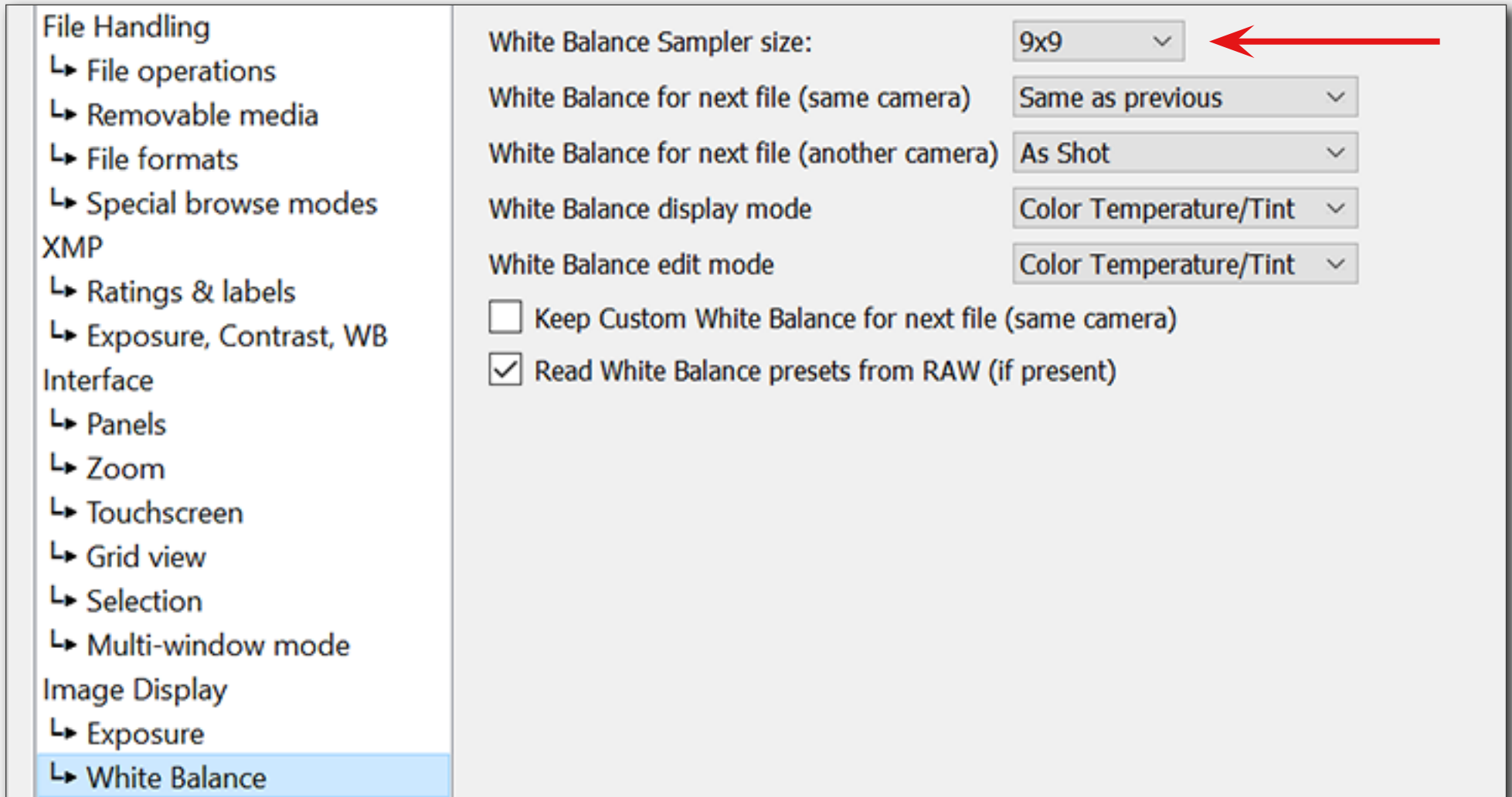
Note: UniWB preset switches white balance off completely.



Sampling Grey Point

Choosing the Sampler Size

- **Menu -> File -> Customize -> Preferences -> White Balance -> *White Balance Sampler Size***



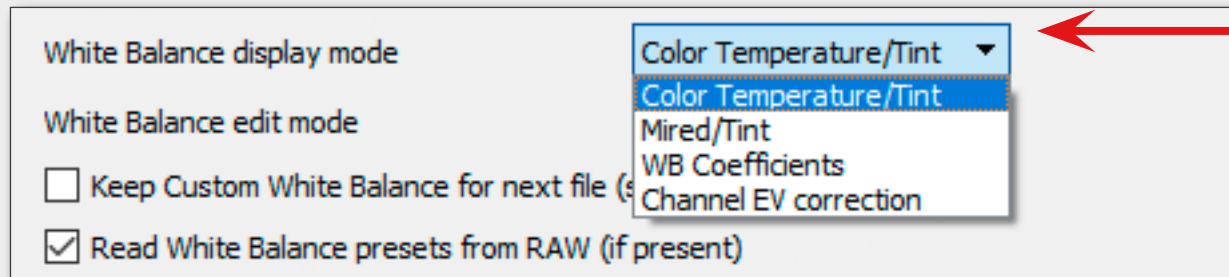
Setting the Grey Point

- Click on **Alt+ LeftClick** on the image on something you designate as neutral.

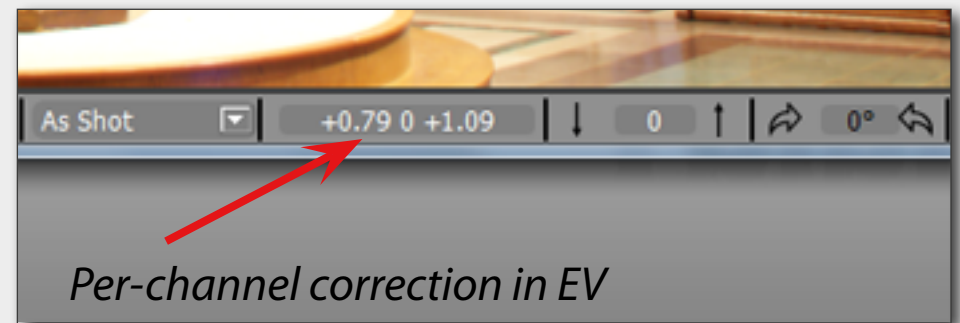
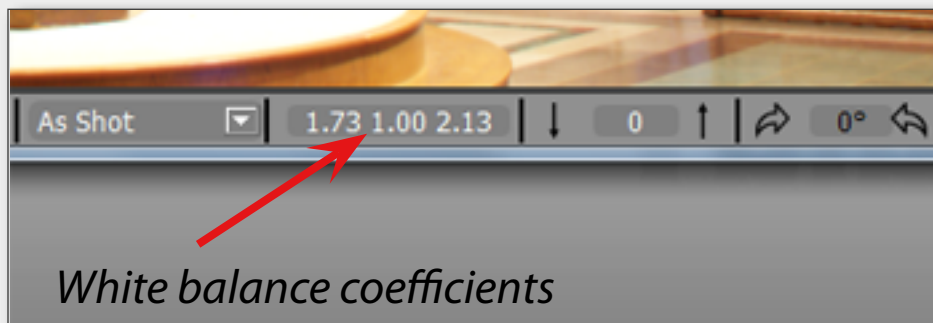
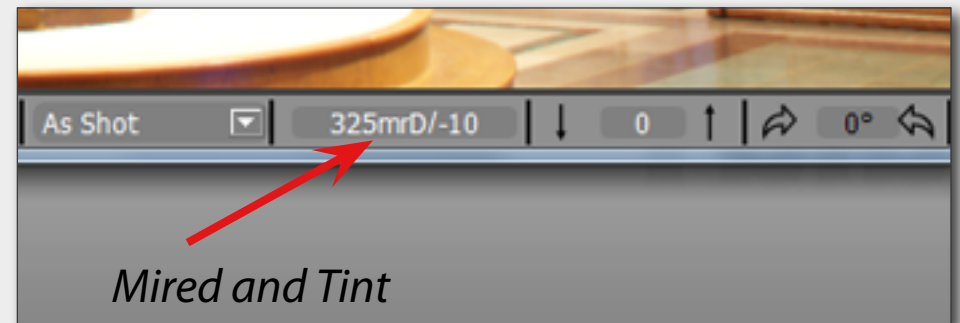
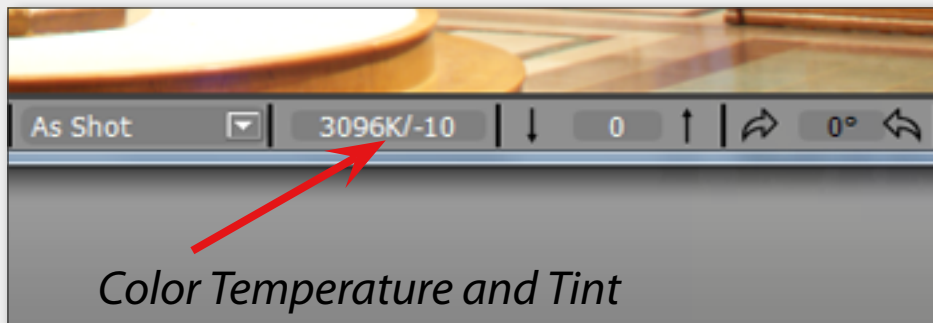


Choosing White Balance Display Mode

- Menu -> File -> Customize -> Preferences -> White Balance -> *White Balance Display Mode*



White Balance settings in the chosen mode will be displayed at the **Bottom Bar**:

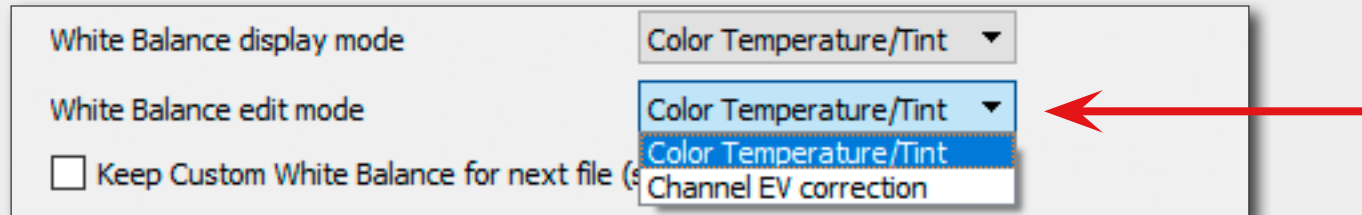




Fine-tuning White Balance

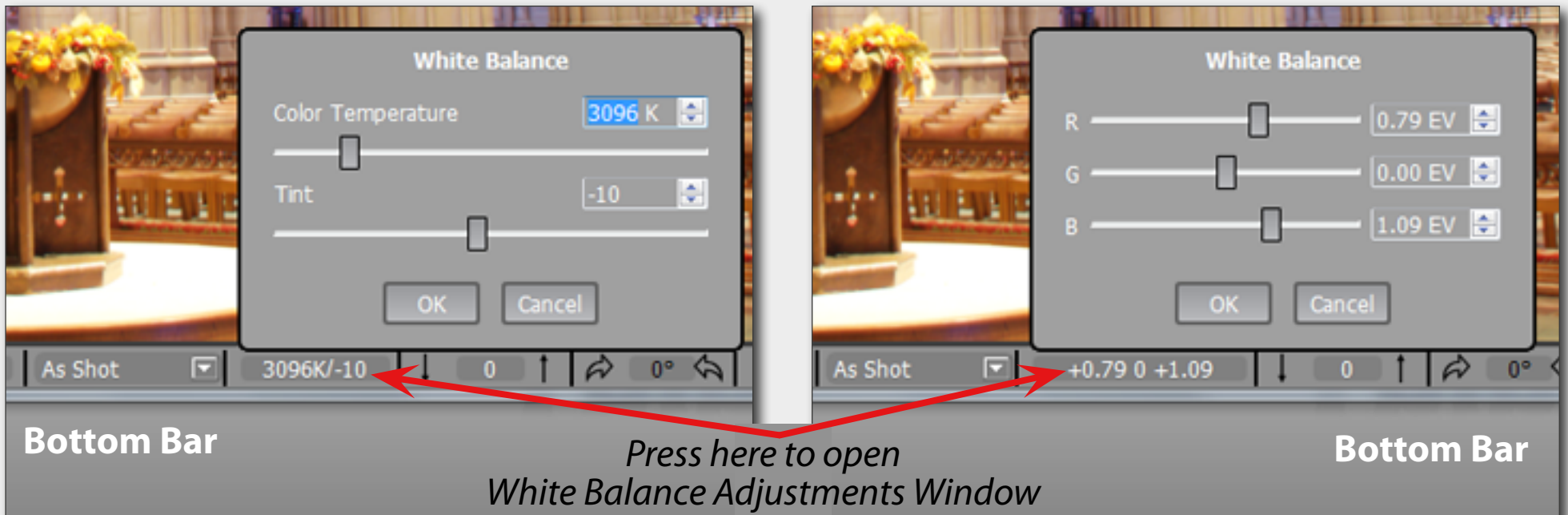
Choose White balance Edit Mode

- Menu -> File -> Customize -> Preferences -> White Balance -> *White Balance Edit Mode*



Adjust White Balance

- Click **White Balance Display** at the Bottom Bar to adjust white balance using sliders in the **White Balance Adjustment Window**



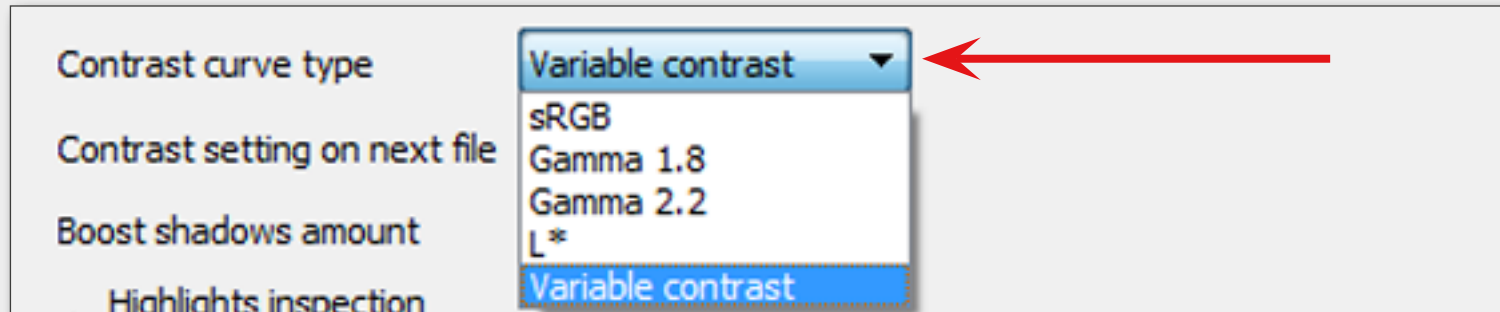


If you want to add “bite” to the image display, or are opting for a flatter look for the scenes with high dynamic range (*which helps see maximum details*), you need to play with the contrast.

FastRawViewer allows one to apply “standard” tone curves (sRGB, Gamma 1.8 and 2.2, L*), but also offers the **Variable Contrast** mode for tone curves.

Choosing a Contrast (Tone) Curve Type

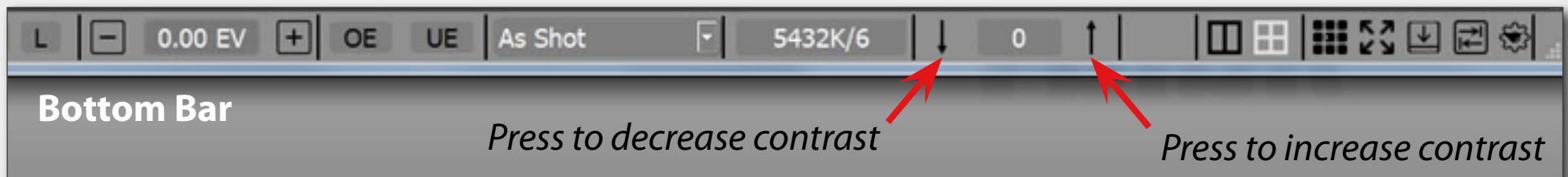
- **Menu -> File -> Customize -> Preferences -> Image Display -> Contrast curve type**



Adjusting Contrast

In Variable Contrast mode, the image contrast can be adjusted in “grades”:

- **Menu -> Adjust -> Increase Contrast (or **K**) / Decrease Contrast (or **⇧K**)**
- or Press vertical arrows at the **Bottom Bar**



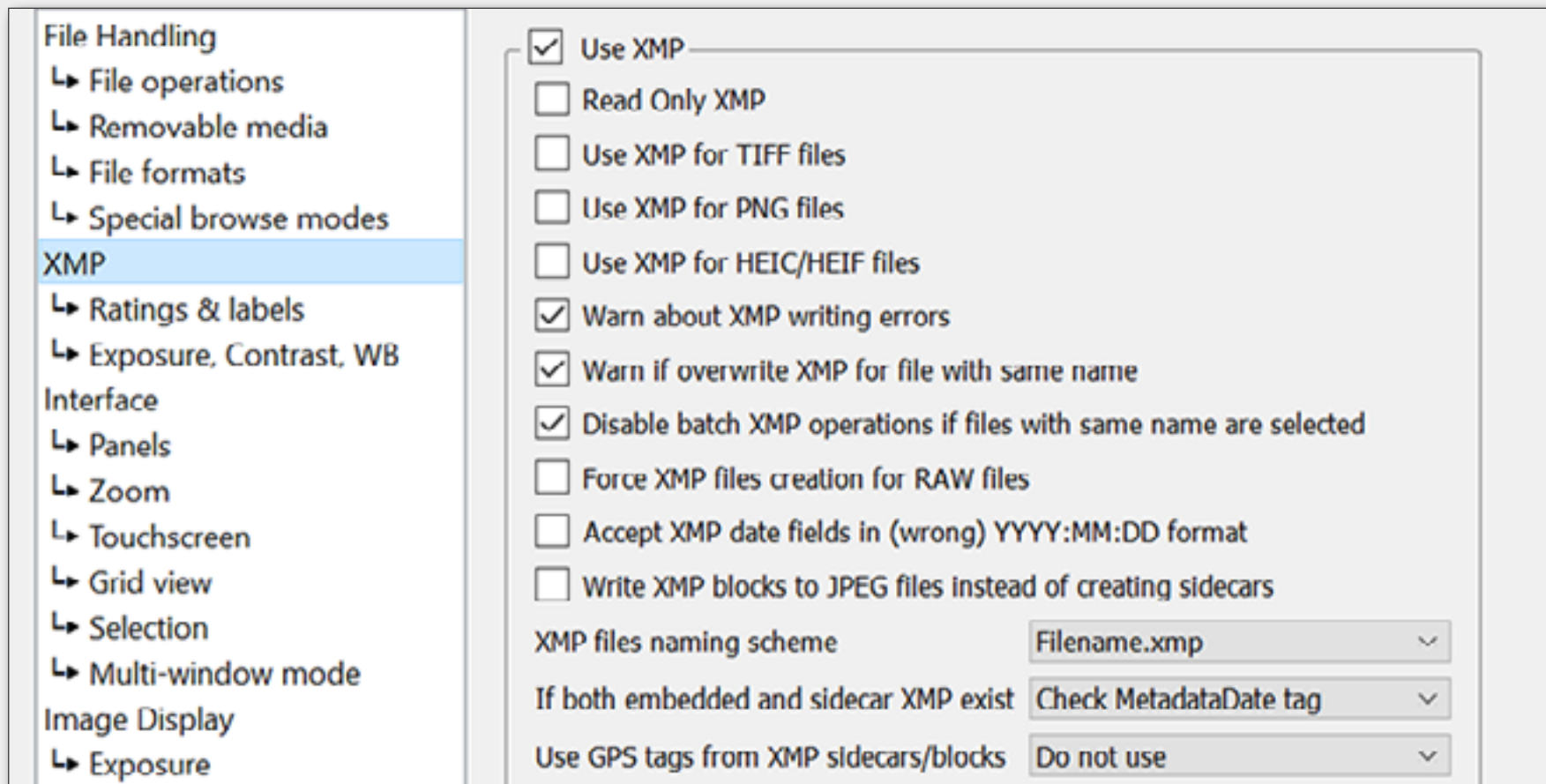


Customizing XMP or RPPS Settings to Match Your RAW Converter

Choosing XMP Settings in Preferences

- **Menu -> File -> Customize -> Preferences -> XMP**

In XMP settings Window you will see several options tuning of which allows better communication between FastRawViewer and your preferred RAW converter.



For RPP Users

- **Menu -> File -> Customize -> Preferences -> Other -> Write RPPS files (RawPhotoProcessor)**



Adjusting Settings and Basic Conversion Parameters

If you are using Adobe ACR or Lr you should:

0a. Switch on "Apply Adobe Exposure Correction"

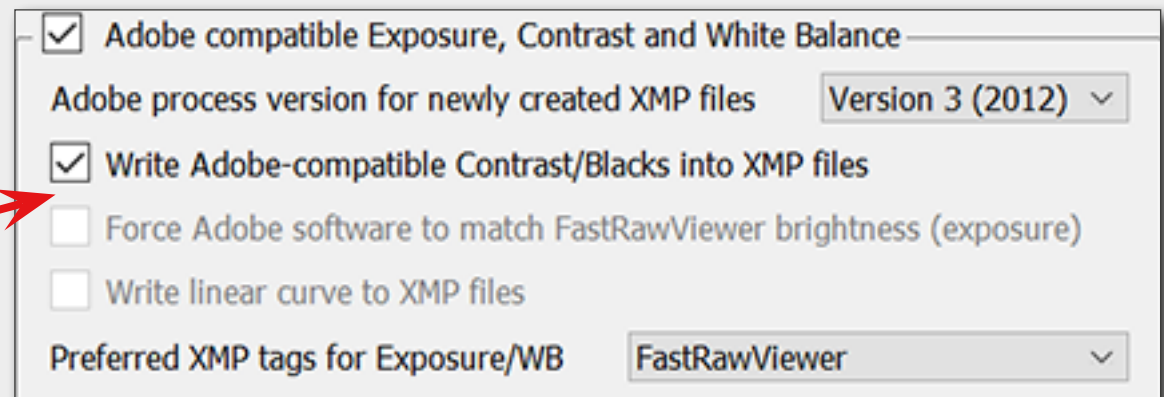
- Menu -> File -> Customize -> Preferences -> Exposure

☒ Apply Adobe hidden exposure correction

0b. Switch on "Adobe compatible Exposure, Contrast and White balance"

- Menu -> File -> Customize -> Preferences -> XMP -> Exposure, Contrast, WB

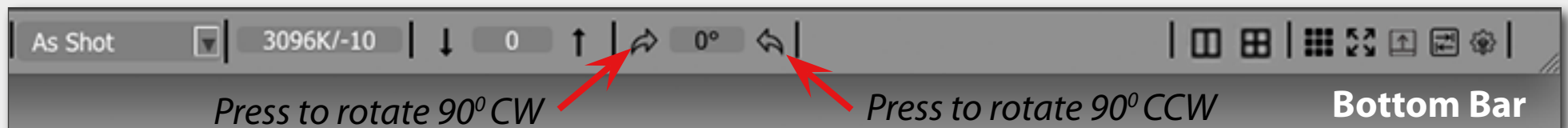
To record Contrast in the format that is acknowledged by Adobe converters, check "Write Adobe-compatible Contrast/Blacks into XMP file"



1. Check the Settings for Sidecar Files .xmp/.rpps (please see the previous tip)

2. Set Image Orientation (if needed)

- Menu -> Adjust -> Rotate 90° CCW (or ⌘7) / Rotate 90° CW (or ⌘9)
- or Press rotation arrows at the **Bottom Bar**



3. Tune White Balance and Adjust Exposure Correction (see tips for 'Assessing the Image: White Balance' and 'Assessing the Image: Exposure Correction')

5. Adjust Contrast (if using Adobe raw converters) (see tips for 'Assessing the Image: Contrast')

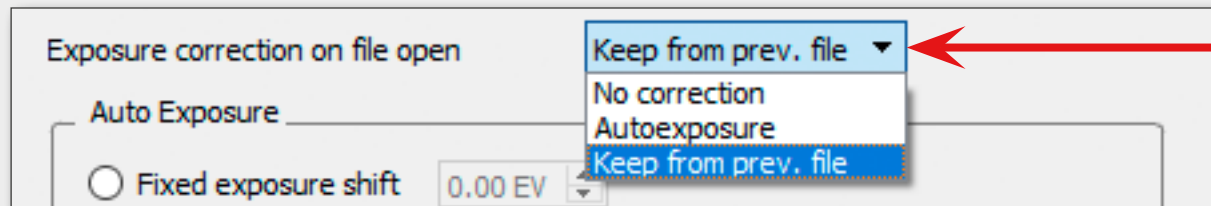


It often happens that several files need the same adjustments to **White Balance**, **Exposure** and **Orientation**. To do so, FastRawViewer offers **Propagation Mode**: in this mode adjustments made to Exposure and White Balance are **automatically applied** to the next image you open in FastRawViewer.

Propagation of Settings from the “Previous” Image to the “Next” (#1)

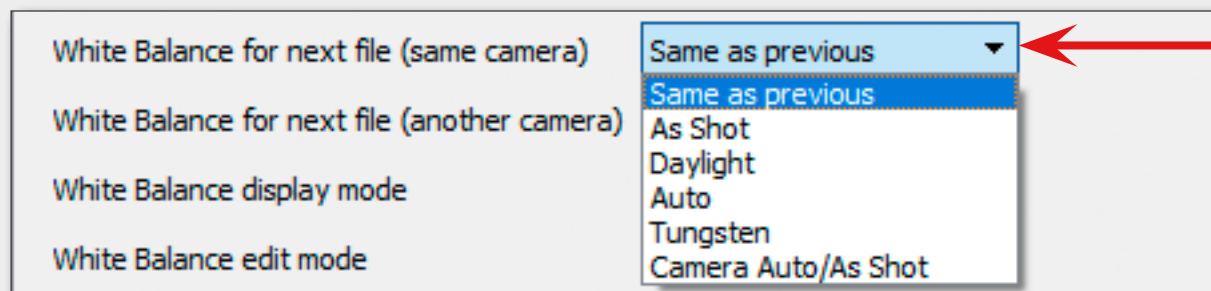
Keep Exposure Correction for the Next Frame

- **Menu -> File -> Customize -> Preferences -> Exposure -> Exposure correction on file open -> choose *Keep from prev. file***



Keep White Balance for the Next Frame

- **Menu -> File -> Customize -> Preferences -> White Balance -> White Balance for next file -> choose *Same as previous***



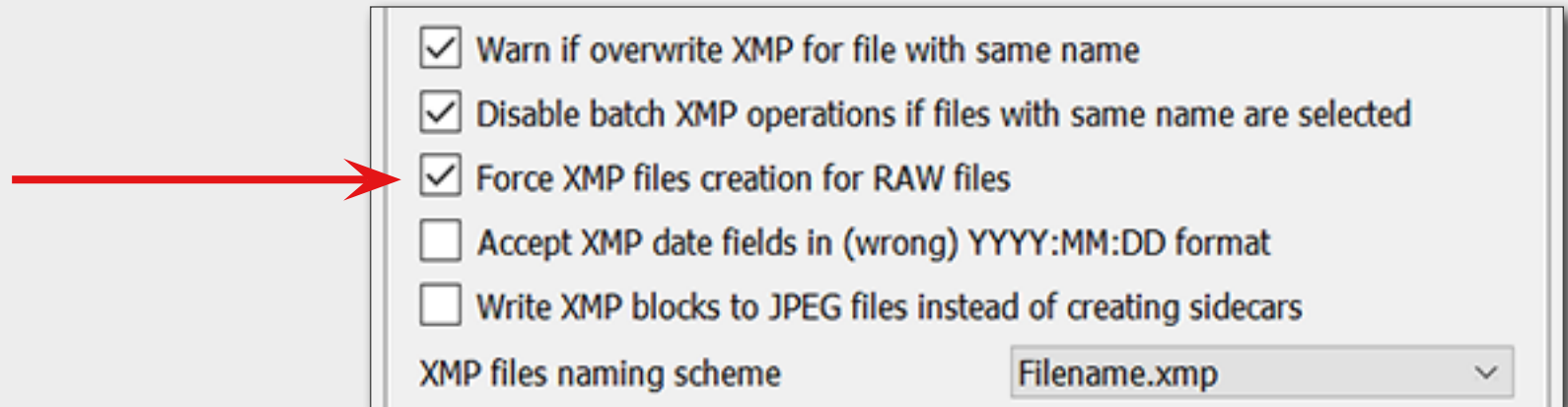


When using Propagation you may choose **Forced Mode** of recording sidecar files. In this case even if no individual adjustments were applied to the image the sidecar file will be written containing all the changes you've made last time within the session. Thus all RAW files will have accompanying sidecar files with the parameter already set to be picked up by RAW converter.

Propagation of Settings from the "Previous" Image to the "Next" (#2)

Force XMP Files Creation

- Menu -> File -> Customize -> Preferences -> XMP -> *Force XMP files creation*



Force RPPS Files Creation

If you are using RPP (*RawPhotoProcessor*) switch on the following:

- Menu -> File -> Customize -> Preferences -> Other -> *Force RPPS files creation*

